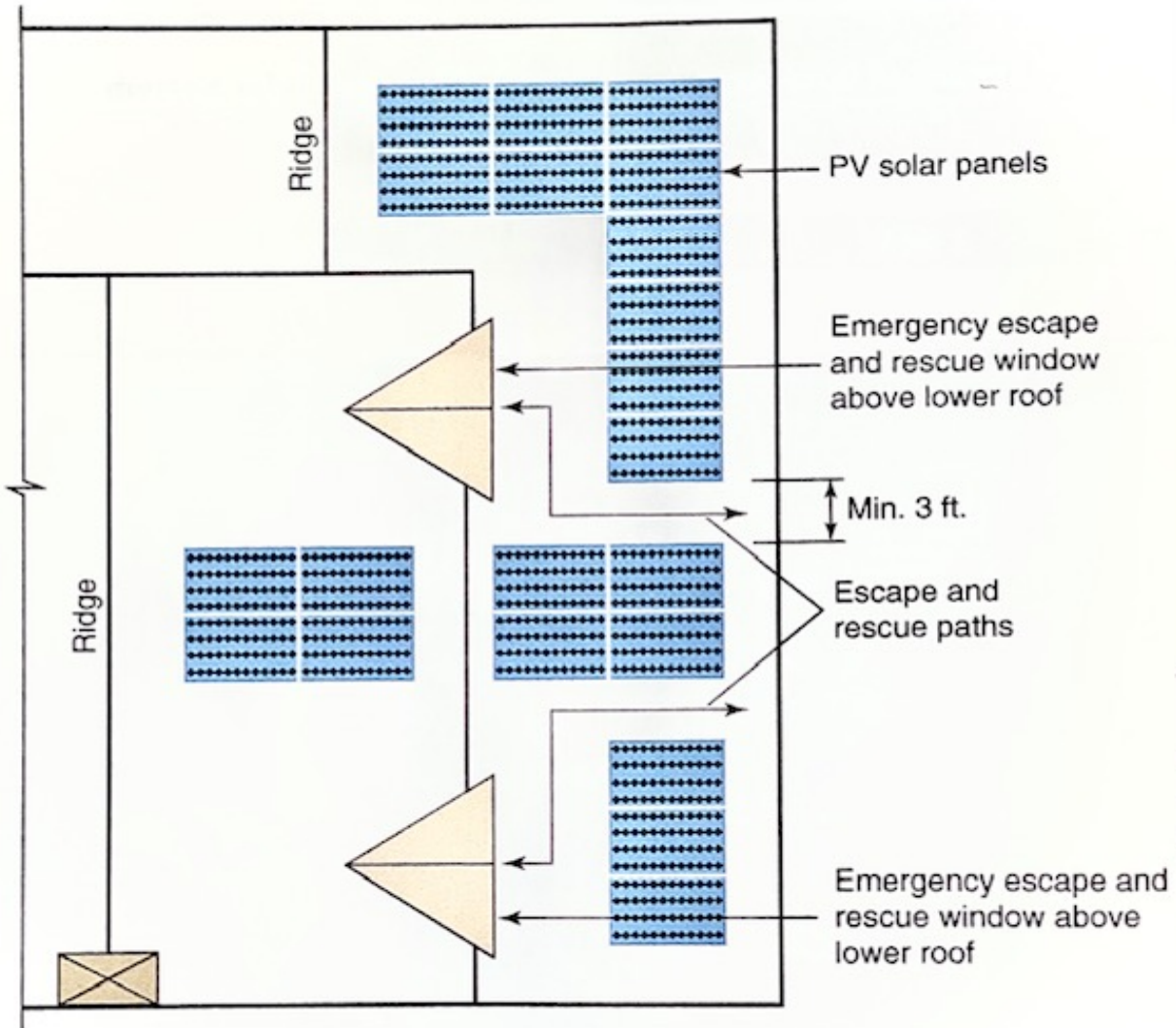


# 2020 FBC-Residential Emergency Solar Access

## R324.6.2.2 Emergency Escape and Rescue Opening



A 36-inch-wide pathway is required for emergency escape and rescue openings above roof-mounted PV solar panels.

This change addresses Section R310, an emergency escape and rescue opening that are required in every bedroom, basement, and habitable attic to provide occupants a way and path out of the dwelling in case of fire, smoke, or other emergency that blocks the means of egress path. The FBC requires a minimum 36-inch-high when opening is under a deck or porch. This similar concept is now become part of the photovoltaic (PV) solar energy provisions to now include this 36-inch width safe path for climbing on the roof to escape. The installation of PV solar array below the escape opening would cause an unsafe condition in an emergency. Thus, the required clear path must be at least 36 inches wide to provide the emergency escape from the roof.