



**ROSENBAUM  
ENGINEERING,  
INCORPORATED**  
Structural & Civil Engineering

1705 South Gadsden Street, Suite 100  
Tallahassee, Florida 32301  
Phone # (904) 671-2340  
Fax # (904) 671-2379

Authorization #: 00007815  
E.O.B.: Robert H. Davis, Jr.  
Florida Registration #: 73115

LEROY COLLINS LIBRARY  
CALL STREET ENTRANCE PARKING AUTOMATION

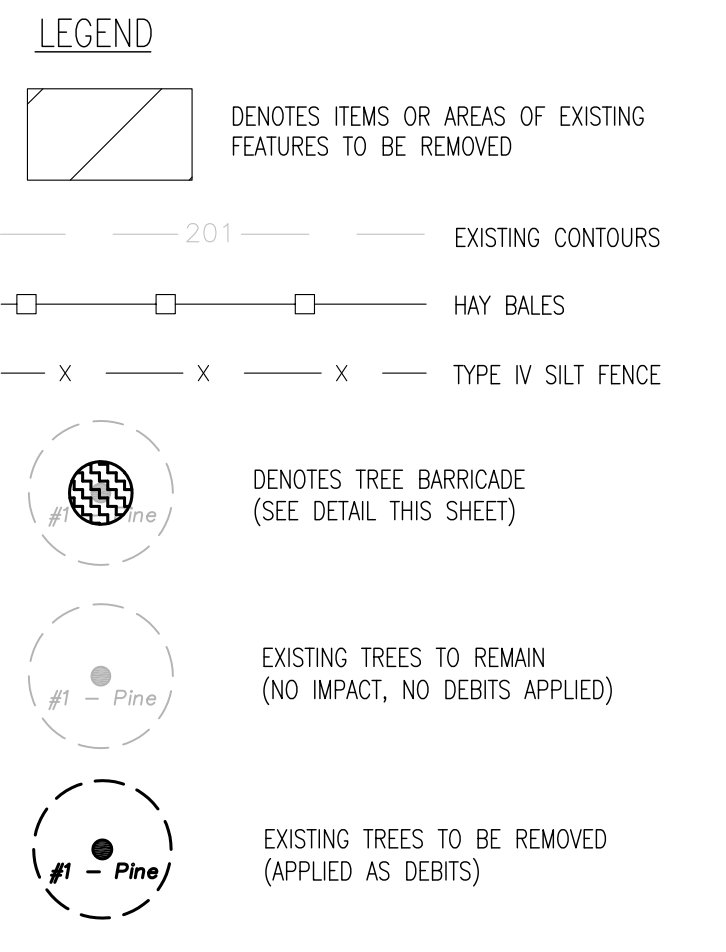
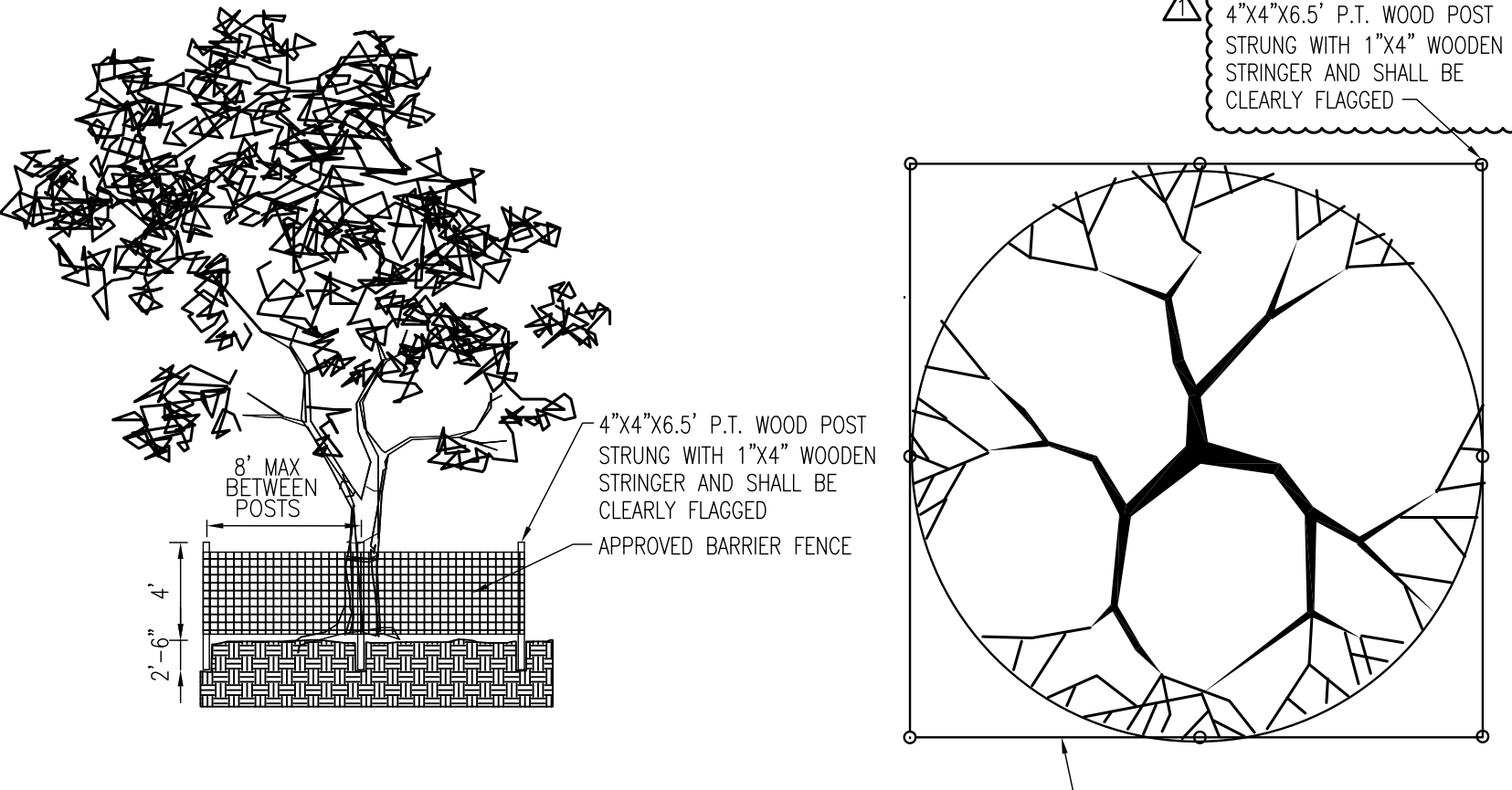
**EROSION CONTROL NOTES**

- SILT FENCE AND HAY BALES SHALL BE CONSTRUCTED IN ACCORDANCE WITH FLORIDA DEPARTMENT OF TRANSPORTATION ROADWAY AND TRAFFIC DESIGN STANDARDS (LATEST EDITION).
- THE ESCAPE OF SEDIMENT FROM THE SITE SHALL BE PREVENTED BY THE INSTALLATION OF EROSION CONTROL MEASURES AND PRACTICES PRIOR TO, OR CONCURRENT WITH, LAND-DISTURBING ACTIVITIES.
- ALL EROSION AND SEDIMENT CONTROL MEASURES SHALL BE CHECKED DAILY AND ANY DEFICIENCIES NOTED SHALL BE CORRECTED BY THE END OF THE DAY.
- ADDITIONAL EROSION CONTROL MEASURES SHALL BE INSTALLED IF DEEMED NECESSARY AFTER ON-SITE INSPECTION TO CONTROL SEDIMENT RUNOFF FROM THE PROJECT SITE.
- THE LOCATION OF CERTAIN EROSION CONTROL MEASURES MAY REQUIRE ALTERING FROM THE LOCATIONS SHOWN ON THE PLANS IF DRAINAGE PATTERNS DURING CONSTRUCTION DIFFER FROM FINAL GRADING PLANS. IT IS THE CONTRACTOR'S RESPONSIBILITY TO ACCOMPLISH EROSION CONTROL FOR DRAINAGE PATTERNS CREATED DURING CONSTRUCTION.
- ALL EROSION CONTROL MEASURES SHALL BE CONTINUOUSLY MAINTAINED BY THE CONTRACTOR DURING CONSTRUCTION.
- ALL DISTURBED AREAS TO BE LEFT FOR LONGER THAN 14 DAYS MUST BE STABILIZED WITH QUICK GROW GRASS SEED AND MULCH.
- THE CONTRACTOR SHALL ENSURE THAT A FOREMAN OR SUPERVISOR WHO HAS BEEN CERTIFIED UNDER FLORIDA STORMWATER EROSION AND SEDIMENTATION CONTROL INSPECTOR TRAINING PROGRAM IS AVAILABLE IN PERSON OR BY PHONE AT ALL TIMES DURING THE CONSTRUCTION ACTIVITIES.
- ADDITIONAL SEDIMENT AND EROSION CONTROL MEASURES MAY BE REQUIRED DURING ANY PHASE OF DEVELOPMENT, AT THE DISCRETION OF THE CITY OF TALLAHASSEE'S ENVIRONMENTAL INSPECTOR.
- WHEELS MUST BE CLEANED TO REMOVE SEDIMENTS PRIOR TO EXITING THE PROJECT SITE. WHEN WASHING IS REQUIRED, IT SHALL BE DONE ON AN AREA STABILIZED WITH CRUSHED STONE.

**SITE DEMOLITION NOTES**

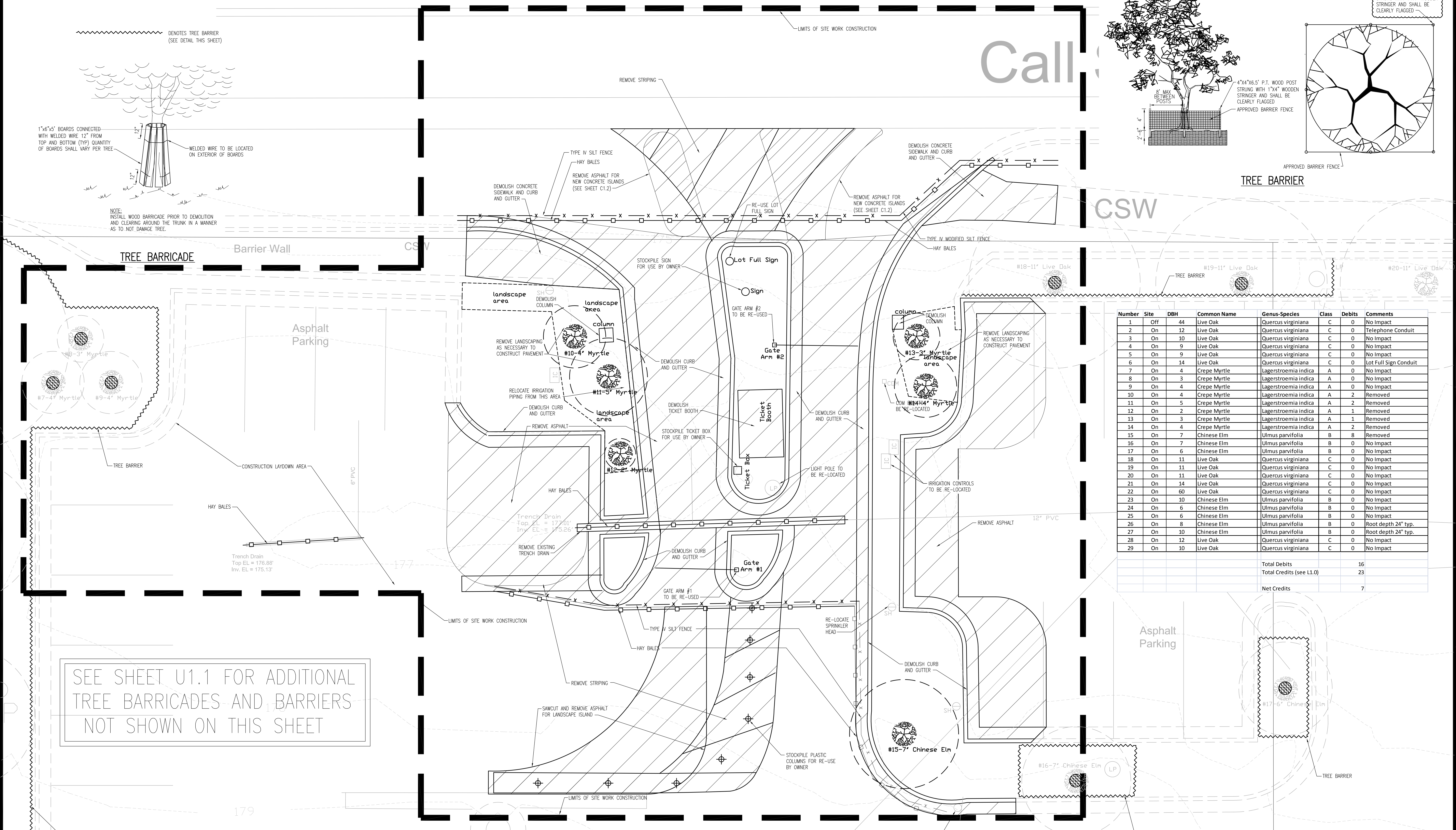
- INSTALL PERIMETER EROSION CONTROL MEASURES AND COORDINATE WITH CIVIL ENGINEER PRIOR TO DEMOLITION AND CLEARING.
- SITE MAY CONTAIN EXISTING FACILITIES NOT SHOWN OR LOCATED ON THIS PLAN.
- REMOVE EXISTING VEGETATION AS SHOWN WITHIN LIMITS OF CONSTRUCTION. IF ADDITIONAL TREES, INDICATED TO REMAIN, CONFLICT WITH NEW CONSTRUCTION, OBTAIN ADDITIONAL DIRECTION FROM THE ENGINEER AND REMOVE AS DIRECTED AT NO ADDITIONAL COST.
- UTILITIES:
  - CONTRACTOR SHALL VERIFY/DETERMINE THE LOCATIONS AND DEPTHS OF ALL UTILITIES WITHIN THE LIMITS OF CONSTRUCTION PRIOR TO BEGINNING ANY WORK ON THE SITE. NOTIFY ARCHITECT IF ANY EXISTING UTILITIES ARE IN CONFLICT WITH THE WORK OR DO NOT HAVE AT LEAST 12" OF COVER. ARCHITECT WILL PROVIDE DIRECTION TO RESOLVE ANY CONFLICTS.
  - PROTECT ALL UTILITIES TO REMAIN FROM DISTURBANCE OR DAMAGE DURING CONSTRUCTION. REPAIR ANY DAMAGE IMMEDIATELY AT NO ADDITIONAL COST.
- ALL EXISTING FEATURES NOT SPECIFICALLY IDENTIFIED FOR REMOVAL, BUT WHICH REQUIRE REMOVAL FOR CONSTRUCTION OF THE PROPOSED FEATURES, SHALL BE DEEMED APPROPRIATE TO THE FEATURES DESIGNATED FOR REMOVAL, AND SHALL BE REMOVED AT NO ADDITIONAL COST TO THE OWNER.
- ALL FEATURES, INCLUDING UTILITIES, NOT TO BE PERMANENTLY REMOVED BUT REQUIRE TEMPORARY REMOVAL OR ARE DISTURBED BY THE CONSTRUCTION SHALL BE RECONSTRUCTED OR REINSTALLED AT THE COMPLETION OF THE PROJECT AT NO ADDITIONAL COST TO THE OWNER.
- COORDINATE WITH UTILITY AND SITE PLANS FOR ADDITIONAL DEMOLITION REQUIREMENTS.
- ALL EARTH MOVING TRUCKS SHALL HAVE THEIR DUST SCREENS COVERING THEIR LOADS WHEN IN TRANSIT.
- CONTRACTOR SHALL BE RESPONSIBLE FOR ALLOWING THE OWNER ACCESS TO THE SITE DURING CONSTRUCTION. CONTRACTOR SHALL ACCESS SITE THROUGH DUAL STREET ENTRANCE.
- THE CONTRACTOR SHALL APPLY FOR A STOCKPILE PERMIT IF REQUIRED BY THE CITY OF TALLAHASSEE.
- CONTRACTOR SHALL STOCKPILE ALL EXISTING SIGNS, LIGHT POLES, AUTO GATES AND OTHER EQUIPMENT FOR OWNER.
- DEMOLISH EXISTING TICKET BOOTHS, INCLUDING FOUNDATION.
- DEMOLISH EXISTING ASPHALT PAVEMENT AS SHOWN ON PLAN, INCLUDING SUBBASE. REMOVE EXISTING TREES AND LANDSCAPING AS NECESSARY TO INSTALL NEW PAVEMENT.
- THERE IS AN EXISTING IRRIGATION SYSTEM WITHIN THE LIMITS OF CONSTRUCTION. THE CONTRACTOR SHALL RE-LOCATE IRRIGATION AS NECESSARY TO NEW LANDSCAPE AREAS. THE CONTRACTOR SHALL BE RESPONSIBLE FOR DESIGN OF RE-LOCATED IRRIGATION SYSTEM.

CONTRACTOR SHALL SWEEP CALL STREET BI-WEEKLY TO REMOVE DIRT, DUST AND DEBRIS



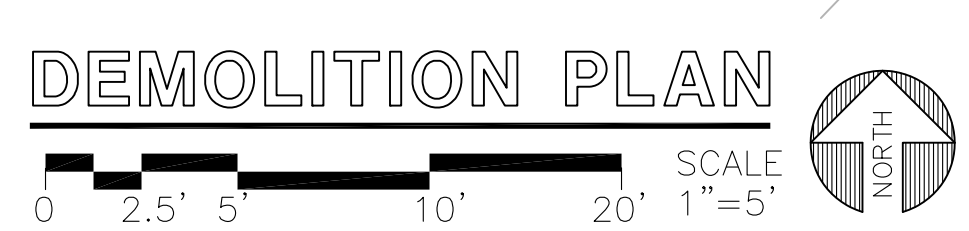
**CULTURAL RESOURCE PERMIT SPECIAL CONDITION:**  
NO SIGNIFICANT ARCHAEOLOGICAL OR HISTORICAL RESOURCES ARE RECORDED WITHIN THE PROJECT AREA. HOWEVER, THE PROJECT AREA IS LOCATED WITHIN CLOSE PROXIMITY TO MANY ARCHAEOLOGICAL SITES AND HAS NOT BEEN SUBJECTED TO SYSTEMATIC PROFESSIONAL ARCHAEOLOGICAL OR HISTORICAL INVESTIGATION.  
IF A CONCENTRATION OF PREHISTORIC OR HISTORIC ARTIFACTS, SUCH AS POTTERY OR CERAMICS, STONE TOOLS OR METAL IMPLEMENTS, OR ANY OTHER PHYSICAL REMAINS THAT COULD BE ASSOCIATED WITH NATIVE AMERICAN CULTURES, EARLY COLONIAL, TERRITORIAL OR AMERICAN SETTLEMENT ARE ENCOUNTERED AT ANY TIME WITHIN THE PROJECT STREETS, THE PERMITTED PROJECT SHALL CEASE ALL ACTIVITIES REGARDING SUBSURFACE DISTURBANCE IN THE IMMEDIATE VICINITY OF SUCH DISCOVERIES. PROJECT ACTIVITIES SHALL NOT RESUME WITHOUT VERBAL AND/OR WRITTEN AUTHORIZATION FROM THE DIVISION OF HISTORICAL RESOURCES AND CITY OF TALLAHASSEE GROWTH MANAGEMENT DEPARTMENT.  
IN THE EVENT THAT UNMARKED HUMAN REMAINS ARE ENCOUNTERED DURING PERMITTED ACTIVITIES, ALL WORK SHALL STOP IMMEDIATELY AND THE PROPER AUTHORITIES NOTIFIED IN ACCORDANCE WITH SECTION 872.05, FLORIDA STATUTES.

CONTACT: FLORIDA DEPARTMENT OF STATE DIVISION OF HISTORICAL RESOURCES COMPLIANCE AND REVIEW SECTION 850-245-6333



Number	Site	DBH	Common Name	Genus-Species	Class	Debits	Comments
1	Off	44	Live Oak	Quercus virginiana	C	0	No Impact
2	On	12	Live Oak	Quercus virginiana	C	0	Telephone Conduit
3	On	10	Live Oak	Quercus virginiana	C	0	No Impact
4	On	9	Live Oak	Quercus virginiana	C	0	No Impact
5	On	9	Live Oak	Quercus virginiana	C	0	No Impact
6	On	14	Live Oak	Quercus virginiana	C	0	Lot Full Sign Conduit
7	On	4	Crepe Myrtle	Lagerstroemia indica	A	0	No Impact
8	On	3	Crepe Myrtle	Lagerstroemia indica	A	0	No Impact
9	On	4	Crepe Myrtle	Lagerstroemia indica	A	0	No Impact
10	On	4	Crepe Myrtle	Lagerstroemia indica	A	2	Removed
11	On	5	Crepe Myrtle	Lagerstroemia indica	A	2	Removed
12	On	2	Crepe Myrtle	Lagerstroemia indica	A	1	Removed
13	On	3	Crepe Myrtle	Lagerstroemia indica	A	1	Removed
14	On	4	Crepe Myrtle	Lagerstroemia indica	A	2	Removed
15	On	7	Chinese Elm	Ulmus parvifolia	B	8	Removed
16	On	7	Chinese Elm	Ulmus parvifolia	B	0	No Impact
17	On	6	Chinese Elm	Ulmus parvifolia	B	0	No Impact
18	On	11	Live Oak	Quercus virginiana	C	0	No Impact
19	On	11	Live Oak	Quercus virginiana	C	0	No Impact
20	On	11	Live Oak	Quercus virginiana	C	0	No Impact
21	On	14	Live Oak	Quercus virginiana	C	0	No Impact
22	On	60	Live Oak	Quercus virginiana	C	0	No Impact
23	On	10	Chinese Elm	Ulmus parvifolia	B	0	No Impact
24	On	6	Chinese Elm	Ulmus parvifolia	B	0	No Impact
25	On	6	Chinese Elm	Ulmus parvifolia	B	0	No Impact
26	On	8	Chinese Elm	Ulmus parvifolia	B	0	Root depth 24" typ.
27	On	10	Chinese Elm	Ulmus parvifolia	B	0	Root depth 24" typ.
28	On	12	Live Oak	Quercus virginiana	C	0	No Impact
29	On	10	Live Oak	Quercus virginiana	C	0	No Impact
						Total Debits	16
						Total Credits (see L1.0)	23
						Net Credits	7

SEE SHEET U1.1 FOR ADDITIONAL TREE BARRICADES AND BARRIERS NOT SHOWN ON THIS SHEET



OVERSHP OF DRAWINGS: These drawings are instruments of service and shall remain the property of the Engineer. The Engineer shall retain all common law, statutory and reserved rights, including the copyright therein. COPYRIGHT 2012

DESIGN: RHD	REV: Addendum 1
CHECKED: WBR	DATE: 11.07.2012
JOB #: P11037.01.01	REV:
DATE: 11.02.2012	REV:

DEMOLITION PLAN

C1.0