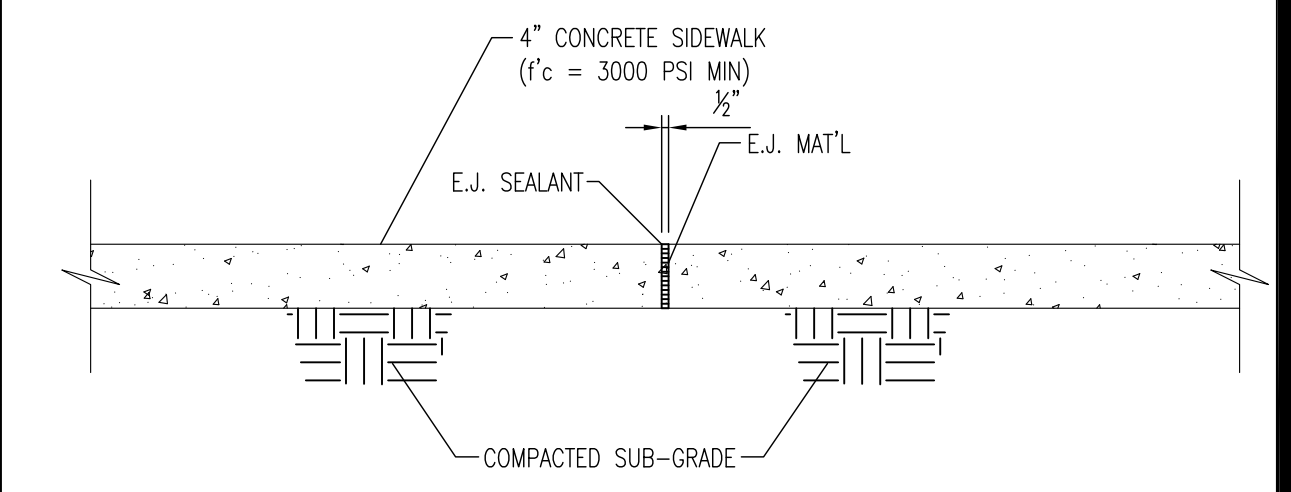
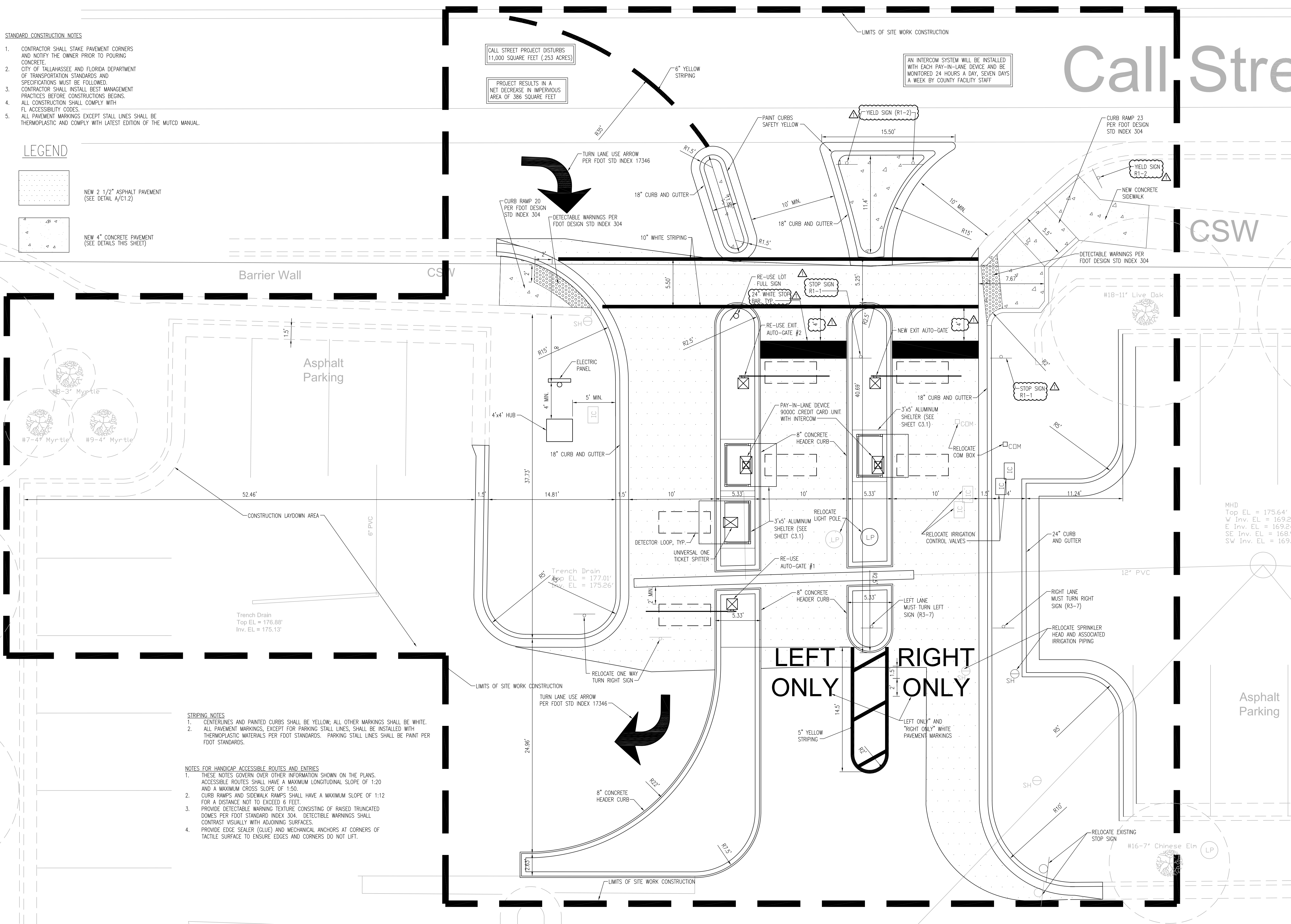
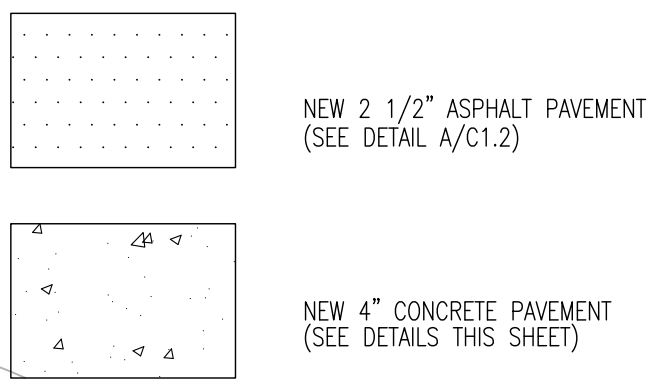


- STANDARD CONSTRUCTION NOTES**
- CONTRACTOR SHALL STAKE PAVEMENT CORNERS AND NOTIFY THE OWNER PRIOR TO POURING CONCRETE.
 - CITY OF TALLAHASSEE AND FLORIDA DEPARTMENT OF TRANSPORTATION STANDARDS AND SPECIFICATIONS MUST BE FOLLOWED.
 - CONTRACTOR SHALL INSTALL BEST MANAGEMENT PRACTICES BEFORE CONSTRUCTIONS BEGINS.
 - ALL CONSTRUCTION SHALL COMPLY WITH F.L. ACCESSIBILITY CODES.
 - ALL PAVEMENT MARKINGS EXCEPT STALL LINES SHALL BE THERMOPLASTIC AND COMPLY WITH LATEST EDITION OF THE MUTCD MANUAL.

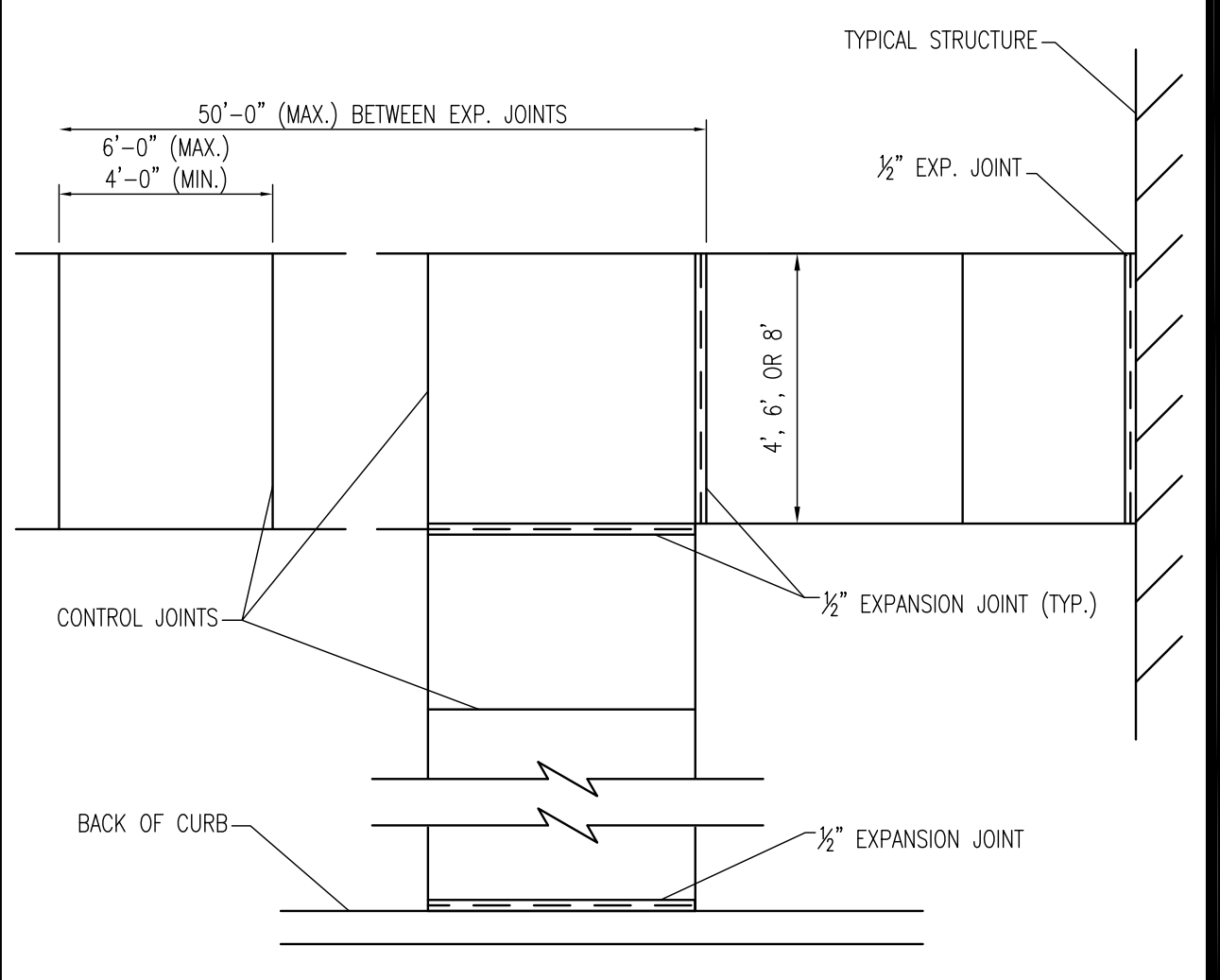
LEGEND



TYPICAL CONCRETE SIDEWALK DETAIL
NO SCALE

NOTES FOR HANDICAP ACCESSIBLE ROUTES AND ENTRIES

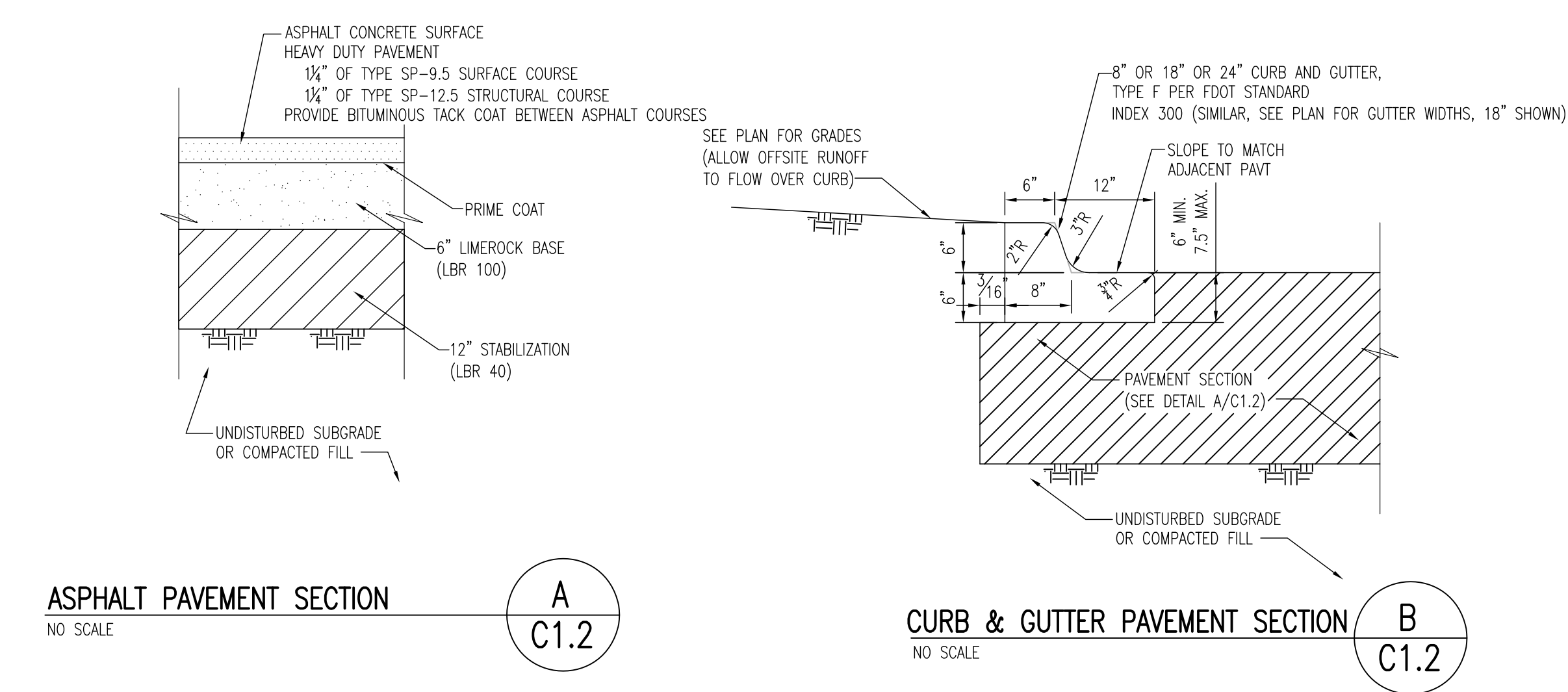
- ALL WALKS SHALL BE 4" THICK.
- CONCRETE SHALL BE REINFORCED WITH POLYPROPYLENE FIBERS AS SPECIFIED.
- CONTROL JOINTS SHALL BE EQUALLY SPACED AS INDICATED. IF NOT INDICATED, EQUALLY SPACED JOINTS AT MAX. INTERVALS OF 4'-0" FOR 2' & 4' SIDEWALKS AND 6'-0" FOR 6' & WIDER SIDEWALKS.
- CONTROL JOINTS SHALL BE 1" DEEP.
- WHERE WALK IS PARALLEL AND ABUTS CONC. CURB, SEPARATE WITH 1/2" EXPANSION JOINT.
- WHERE WALK ABUTS STRUCTURE, SEPARATE WITH 1/2" EXP. JOINT.
- ALL SIDEWALKS GREATER THAN 8'-0" IN WIDTH SHALL HAVE A LONGITUDINAL CONTROL JOINT IN THE CENTERLINE OF THE SIDEWALK. LONGITUDINAL CONTROL JOINTS SHALL NOT BE SPACED GREATER THAN 8'-0".
- PROVIDE 1/2" EXPANSION JOINTS AT 50' INTERVALS FOR LONG RUNS OF SIDEWALK.
- SLOPE THE SIDEWALKS 1/16" PER FOOT (ABSOLUTE MAXIMUM) TRANSVERSELY UNLESS OTHERWISE NOTED.



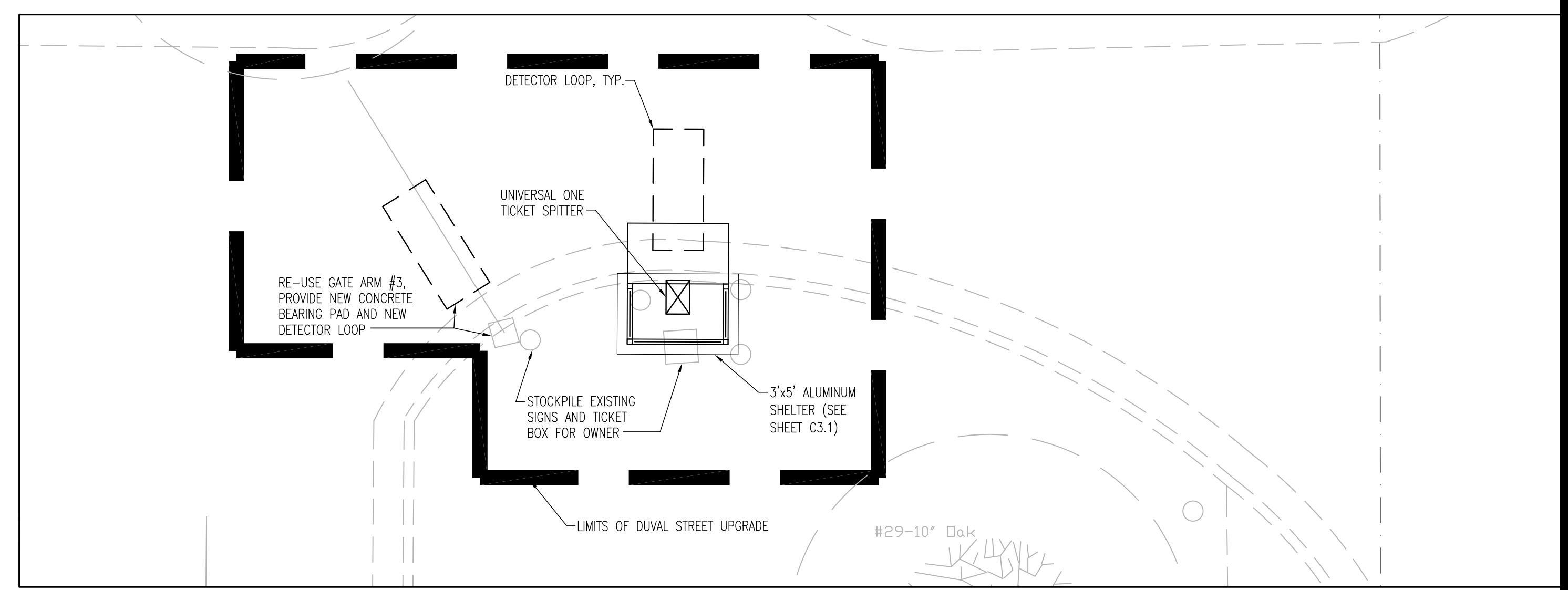
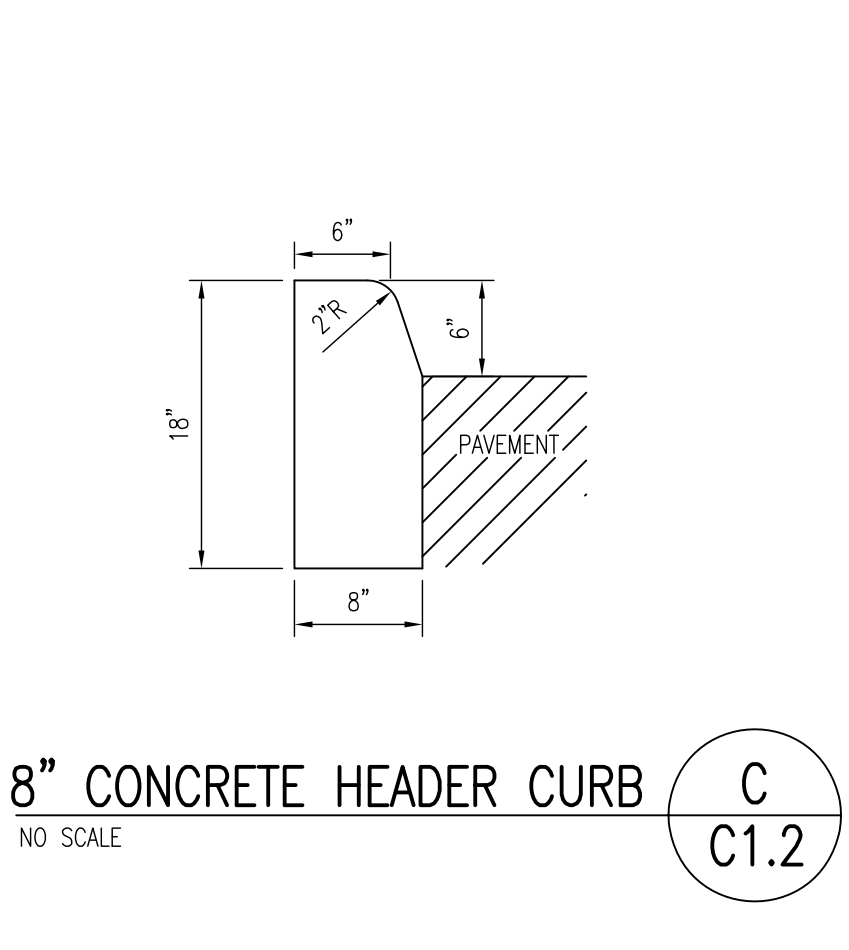
TYPICAL CONCRETE WALK JOINT LAYOUT
NO SCALE

SITE DATA

1.0	PARCEL ID:	#21-36-40-211-4015
2.0	ZONING:	MULTIPLE ZONING DESIGNATIONS
3.0	TOTAL SITE AREA:	2,214 AC = 96,471 ± SF
4.0	TOTAL PROJECT DISTURBED AREA:	0.2525 AC = 11,000 SF
6.0	EXISTING GREEN SPACE:	1,452 SF = 0.033 AC
7.0	PROPOSED GREEN SPACE:	1,838 SF = 0.042 AC
8.0	INCREASE IN GREEN SPACE:	386 SF
9.0	EXISTING LANDSCAPE AREA:	295.4 SF
10.0	PROPOSED LANDSCAPE AREA:	790.6 SF
11.0	INCREASE IN LANDSCAPE AREA:	495.2 SF



CALL STREET DRIVEWAY CONNECTION



DUVAL STREET ENTRANCE

SITE LAYOUT AND PAVING PLAN



ROSENBAUM ENGINEERING, INCORPORATED
Structural & Civil Engineering

1705 South Cassdell Street, Suite 100
Tallahassee, Florida 32301
Phone # (904) 671-2340
Fax # (904) 671-2379

Authorization #: 00007815
E.O.B.: Robert H. Davis, Jr.
Florida Registration #: 73115

**LEROY COLLINS LIBRARY
CALL STREET ENTRANCE PARKING AUTOMATION**

OWNERSHIP OF DRAWINGS: These drawings are instruments of service and shall remain the property of the Engineer. The Engineer shall retain all common law, statutory and reserved rights, including the copyright therein. ©2012 R&B

DESIGNED	RHD	REV	Addendum 1
CHECKED	WBR	DATE	11.07.2012
JOB #	PT11037.01.01	REV	
DATE	11.02.2012	REV	

SITE LAYOUT AND PAVING PLAN

C1.2