

## General Notes

- The COT Standard Specifications for the Design and Construction of Water and Wastewater Facilities, January 2006 edition, as amended, shall be the governing specifications for construction of water distribution and sanitary sewerage (i.e. wastewater collection systems) facilities. These specifications, hereinafter referred to as the "COT Standard Specifications" are hereby incorporated into the Contract by reference as if fully written herein. Electronic files of this document (at no charge) may be obtained by contacting Sal Arnado, Water Resources Engineering Division, located at 408 N. Adams Street, Tallahassee, FL 32301 (Tel: 850-591-6155), or email sal.arnado@talgov.com.
- Replace all services, whether shown or not shown on the Plans. Relocate meter and meter box to right-of-way line or to the limits of construction.
- Relocate all backflow prevention devices with meters to the right-of-way line or to the limits of construction. Test relocated backflow prevention devices for proper operation conducted by a certified backflow prevention technician, retained and paid-for by the Contractor.
- For stubs without a fire hydrant on end, construct 3' blow off on cap or plug for flushing and testing.
- If clearing, grubbing, and drainage work is performed before proposed water main installation, and service laterals are designated to be replaced, relocate or adjust service laterals so as not to interrupt customers' water supply.
- At no time will an existing looped public water system be cut or plugged without prior approval by the Engineer.
- Notify affected water customers of planned outages a minimum of 24 hours in advance of implementing the outage.
- Information shown in the Plans concerning the type and location of underground and overhead utilities is based on data provided by utility owners, available records, and field surveys. Said information may not include all utilities within the project limits, either active or placed out-of-service, or that said utilities are actually in the horizontal or vertical positions shown in the Plans. Determine the type and location of utilities to establish their locations and to avoid damage to said utilities.
- Existing COT-owned sanitary sewer utilities shall remain in-place unless otherwise indicated in the Plans.
- The Plans show approximate locations of active and inactive sewer service laterals, based on pipeline inspections conducted by COT. Field-verify active sewer service laterals and adjust them, at locations directed by the Engineer. Plug Inflow and effluent ends of inactive sewer service laterals with grout to place them out-of-service. The cost of placing inactive sewer laterals out of service is incidental to other items in the Contract.
- Maintain sanitary sewer service to commercial and residential customers at all times. Provide by-pass pumping, as needed, to maintain continuous sanitary sewer service during construction. The cost of by-pass pumping shall be included in the Contract Unit Prices for sewer pipe.
- The frame and covers (castings) of all existing COT-owned sewer manholes and valve boxes within the limits of construction shall be adjusted to match finished pavement grades.
- Trench sheeting and bracing shall be adequate to prevent cave-in of trench walls, subsidence of areas adjacent to the trench, damage to water and sewer pipelines and other utilities, and sloughing of the base of the excavation from water seepage. The responsibility for the adequacy of any sheeting and bracing belongs to the Contractor.
- Support existing sewer and water mains that cross storm sewer trenches so as to prevent joint separation and damage to said mains. The responsibility for the adequacy of any required support systems belongs to the Contractor.
- The cost of sheeting, bracing, dewatering, and utility support systems is considered incidental to the pay items in the Contract for water and sewer pipe. No separate payment will be made for sheeting, bracing, dewatering, or utility support systems.
- When there is a separate pay item in the Contract for Record Drawing Preparation, payment shall be made under that pay item. When there is no separate pay item in the Contract for Record Drawing Preparation, no separate payment will be made and this work shall be considered incidental to other pay items in the Contract.
- Install restrained joints on all potable water 8 - inch stubs.
- Deflection of pipeline joints to achieve horizontal and/or vertical clearance of conflicts with other utilities, structures, or storm drains is preferred over installation of fittings to achieve deflection. Deflection of joints must be performed in accordance with the pipe manufacturer's specifications.
- All potable water and force main valve boxes shall include a concrete collar in accordance with the detail shown in the plans.
- ARV vaults shall comply with the requirements of Section 7.2.3.1 of the COT Standard Specifications for pre-cast concrete manholes.
- ARV installations shall be 3" Ø combination air/vacuum and 2" Ø blow-off valves unless otherwise indicated in the plans.

INITIAL	DATE	REVISIONS	NO.	BY	DATE
SURVEYED BY					
DESIGN BY	SGA	03/02/2010			
DRAWN BY	LB	03/03/2010			
CHECKED BY	SGA	03/08/2010			
SCALE:	SOLICITATION NO.: ITB - 021 - 0 - 2010 / KR (LEON COUNTY) WRE FILE NO.: PROJ/GP/WTR-100-04-086				

## Legend

EXIST	Description	New
WM	Potable Water Main	12" WM
	Fire Hydrant Assembly	
	Valve	12" V
FM	Sanitary Sewer Force Main	12" FM
SAN	Sanitary Sewer Gravity Main	
	Sanitary Sewer Manhole	
	Sanitary Sewer Force Main Air Release Valve	
	Overhead Electric	PELEC
OEOT	Overhead Electric & Telephone	PELEC
BT	Buried Telephone	PBT
EGAS	Gas Main	P-GAS
	Drainage Pipes	
	Drainage Manholes	
	Drainage Inlets	
	Drainage Mitered End Sections	
	Drainage Structure Numbers	S-117

## Abbreviations

AASHTO	American Association of State Highway and Transportation Officials
ARV	air relief valve(s)
AWMA	American Water Works Association
BRV	butterfly valve(s)
BL	base line
BV	ball valve(s)
COT	City of Tallahassee
CONST	construct or construction
CV	check valve(s)
DIP	ductile iron pipe
EL	elevation
EMS	electronic marker system
EXIST	existing
FDEP	Florida Department of Environmental Protection
FDOT	Florida Department of Transportation
FM	force main(s)
GV	gate valve(s)
HDPE	high-density polyethylene
INV	invert
PCCP	pre-stressed concrete cylinder pipe
PROP	proposed
PV	plug valve(s)
PVC	polyvinyl chloride
R/R	remove and replace
R/W	right-of-way
SAN	sanitary sewer
SSMH	sanitary sewer manhole
TS&V	tapping sleeve and valve
WTFM	wastewater transmission force main
WM	water main
WV	water valve

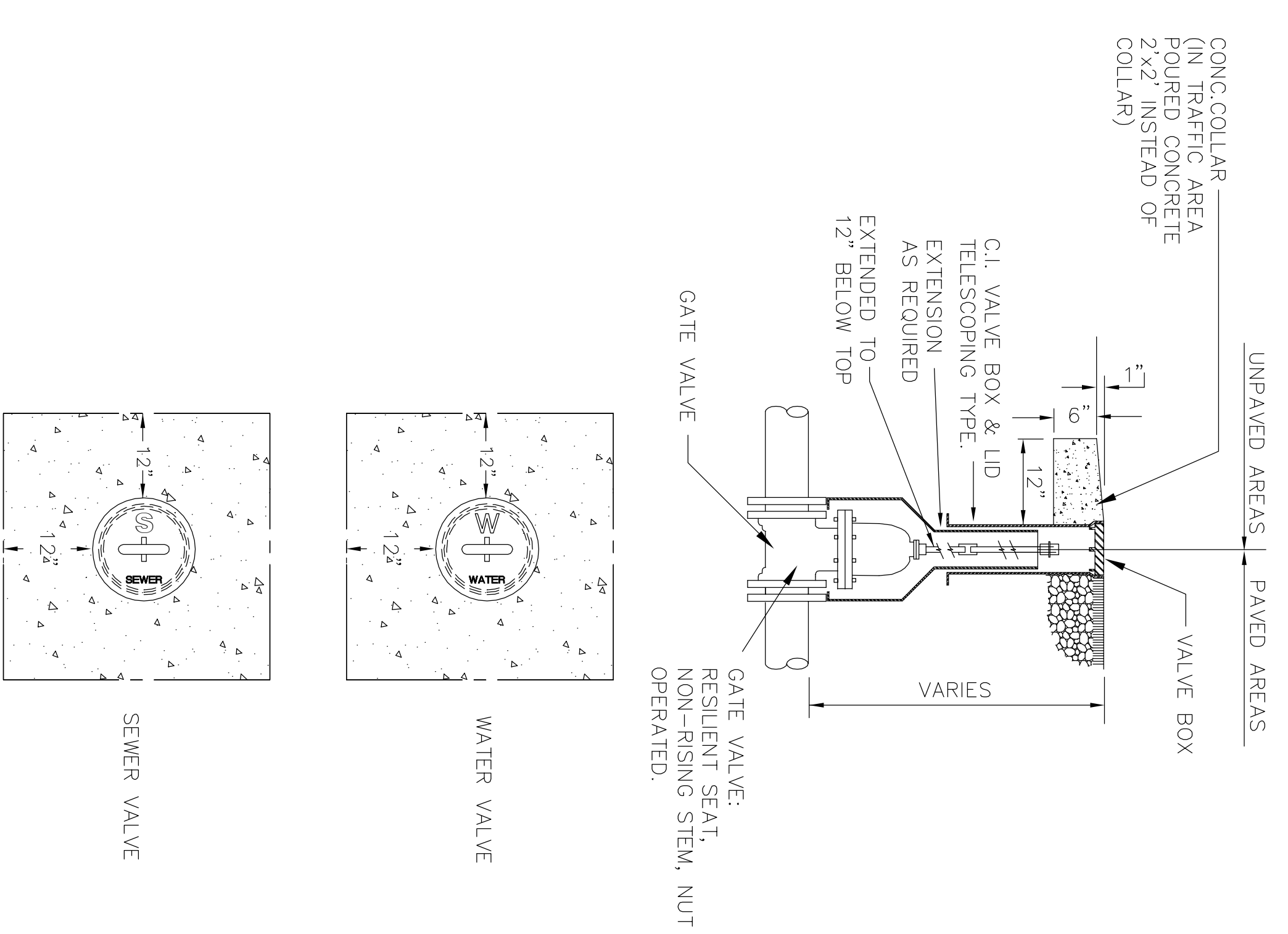
## Summary of Pay Items

LEON COUNTY	BUCK LAKE ROAD PHASE II & III County Road 1568	UNIT	QUANTITY
ITEM NO.	ITEM DESCRIPTION	EA	
121-70	Flowable Fill, Excavable	CY	300
425-3-91	Junction box, Drainage, Utility Conflict, <10 FT., Refer to indices 201 and 307	EA	1
425-6	Adjusting Manholes	EA	5
1050-11-329a	Utility Valve, 1.0 in.	EA	15
1050-11-329b	Utility Pipe, F80, Copper, Water, 1.5 in.	LF	300
1050-11-329c	Utility Pipe, F80, Copper, Water, 2.0 in.	LF	200
1050-11-424a	Utility Pipe, F80, DIP, Water, 8.0 in.	LF	997
1050-11-424b	Utility Pipe, F80, DIP, Sewer, 12.0 in.	LF	6,181
1050-11-424c	Utility Pipe, F80, DIP, Sewer, 12.0 in.	LF	40
1050-11-424d	Utility Pipe, F80, DIP, Sewer, 12.0 in.	LF	6,080
1050-11-101	Utility Fittings, R&L, 2.4 in., V&C/AIR Relief Assembly, Sewer	EA	4
1050-11-403	Utility Fittings, R&L, 2.4 in., Water Tapping Saddle/Sleeve	EA	7
1050-11-404a	Utility Fittings, R&L, 8.0 in., Water Valve Assembly	EA	18
1050-11-404b	Utility Fittings, R&L, 12.0 in., Water Valve Assembly	EA	12
1050-11-404c	Utility Fittings, R&L, 12.0 in., Sewer Valve Assembly	EA	4
1044-35-08	Fire Hydrant, Traffic, 3-way, Two nose, One number, 6 in.	EA	4
1044-35-08	Fire Hydrant, Remove	EA	2

## Pay Item Notes

- Pipeless that are shown on the plans to be "REMOVED" may at the Contractor's option, remain in-place and be placed out-of-service by filling the conduits with excavable flowable fill and plugging the ends. The cost of placing conduits out-of-service shall be included in the unit price for excavable flowable fill pay item. The cost for removal of conduits, at Contractor's option, shall be incidental to the clearing and grubbing pay item(s) in the Contract.

## Valve Box Assembly Detail (Not to Scale)



## PROJECT:

BUCK LAKE ROAD

## SHEET TITLE

GENERAL NOTES, LEGEND, ABBREVIATIONS,  
AND SUMMARY OF PAY ITEMS

## SHEET

U-2