

# Call Street

## LEGEND

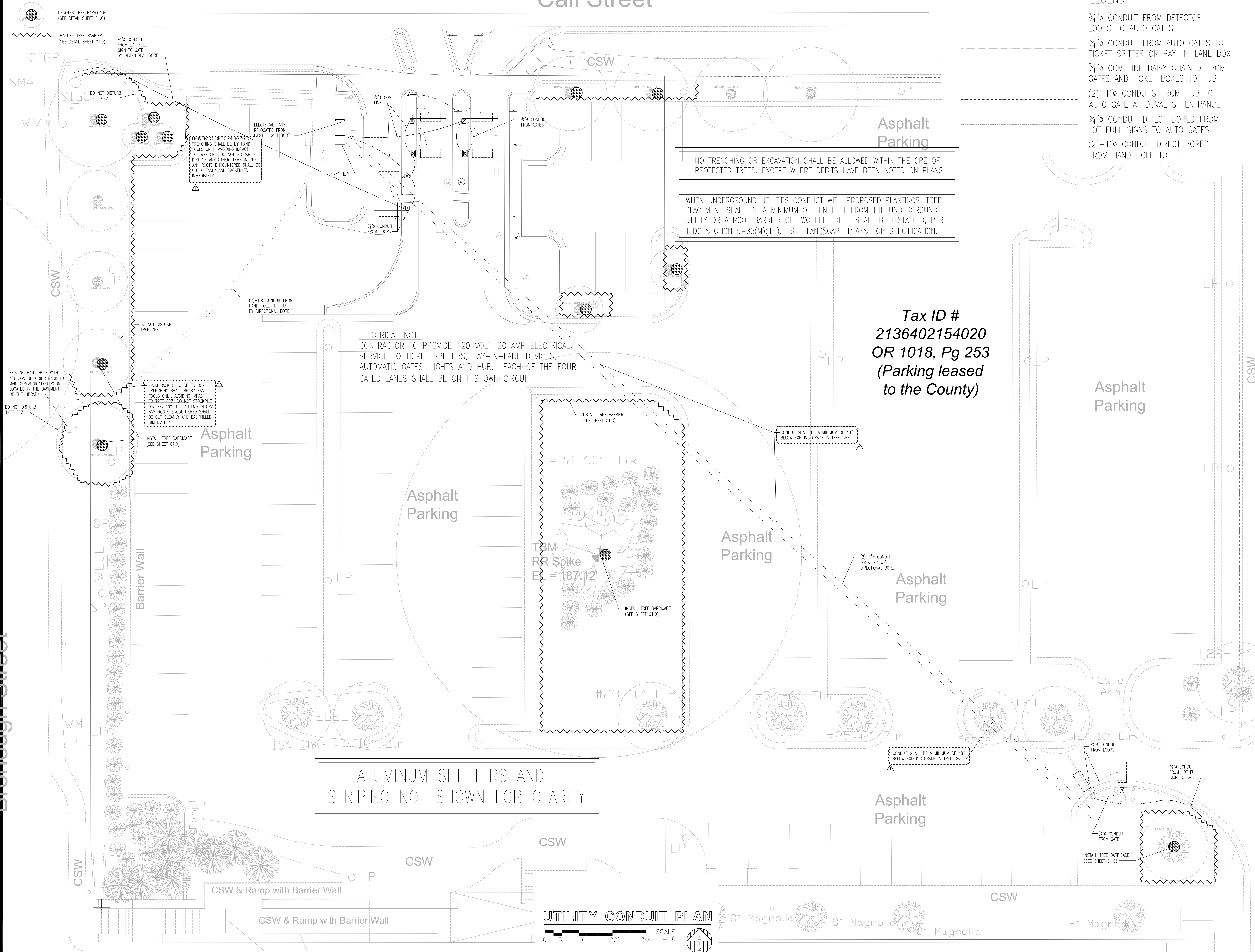
- 3/4" Ø CONDUIT FROM DETECTOR LOOPS TO AUTO GATES
- 3/4" Ø CONDUIT FROM AUTO GATES TO TICKET SPITTER OR PAY-IN-LANE BOX
- 3/4" Ø COM LINE DAISY CHAINED FROM GATES AND TICKET BOXES TO HUB
- (2)-1" Ø CONDUITS FROM HUB TO AUTO GATE AT DUVAL ST ENTRANCE
- 3/4" Ø CONDUIT DIRECT BORED FROM LOT FULL SIGNS TO AUTO GATES
- (2)-1" Ø CONDUIT DIRECT BORED FROM HAND HOLE TO HUB



**ROSENBAUM ENGINEERING, INCORPORATED**  
Structural & Civil Engineering

1705 South Gadsden Street, Suite 100  
Tallahassee, Florida 32301  
Phone # (904) 671-2340  
Fax # (904) 671-2379  
Authorization #: 00007815  
E.O.B.: Robert H. Davis, Jr.,  
Florida Registration #: 73115

**LEROY COLLINS LIBRARY  
CALL STREET ENTRANCE PARKING AUTOMATION**



**ELECTRICAL NOTE**  
CONTRACTOR TO PROVIDE 120 VOLT-20 AMP ELECTRICAL SERVICE TO TICKET SPITTERS, PAY-IN-LANE DEVICES, AUTOMATIC GATES, LIGHTS AND HUB. EACH OF THE FOUR GATED LANES SHALL BE ON IT'S OWN CIRCUIT.

NO TRENCHING OR EXCAVATION SHALL BE ALLOWED WITHIN THE CPZ OF PROTECTED TREES, EXCEPT WHERE DEBITS HAVE BEEN NOTED ON PLANS

WHEN UNDERGROUND UTILITIES CONFLICT WITH PROPOSED PLANTINGS, TREE PLACEMENT SHALL BE A MINIMUM OF TEN FEET FROM THE UNDERGROUND UTILITY OR A ROOT BARRIER OF TWO FEET DEEP SHALL BE INSTALLED, PER TLDC SECTION 5-85(M)(14). SEE LANDSCAPE PLANS FOR SPECIFICATION.

**Tax ID #  
2136402154020  
OR 1018, Pg 253  
(Parking leased to the County)**

ALUMINUM SHELTERS AND STRIPING NOT SHOWN FOR CLARITY

### UTILITY CONDUIT PLAN



OWNER: RHD	REV: Addendum 1
CHECKED: WBR	DATE: 11.07.2012
JOB #: P11037.01.01	REV:
DATE: 11.02.2012	REV:

UTILITY CONDUIT PLAN

**U1.1**

Brough Street