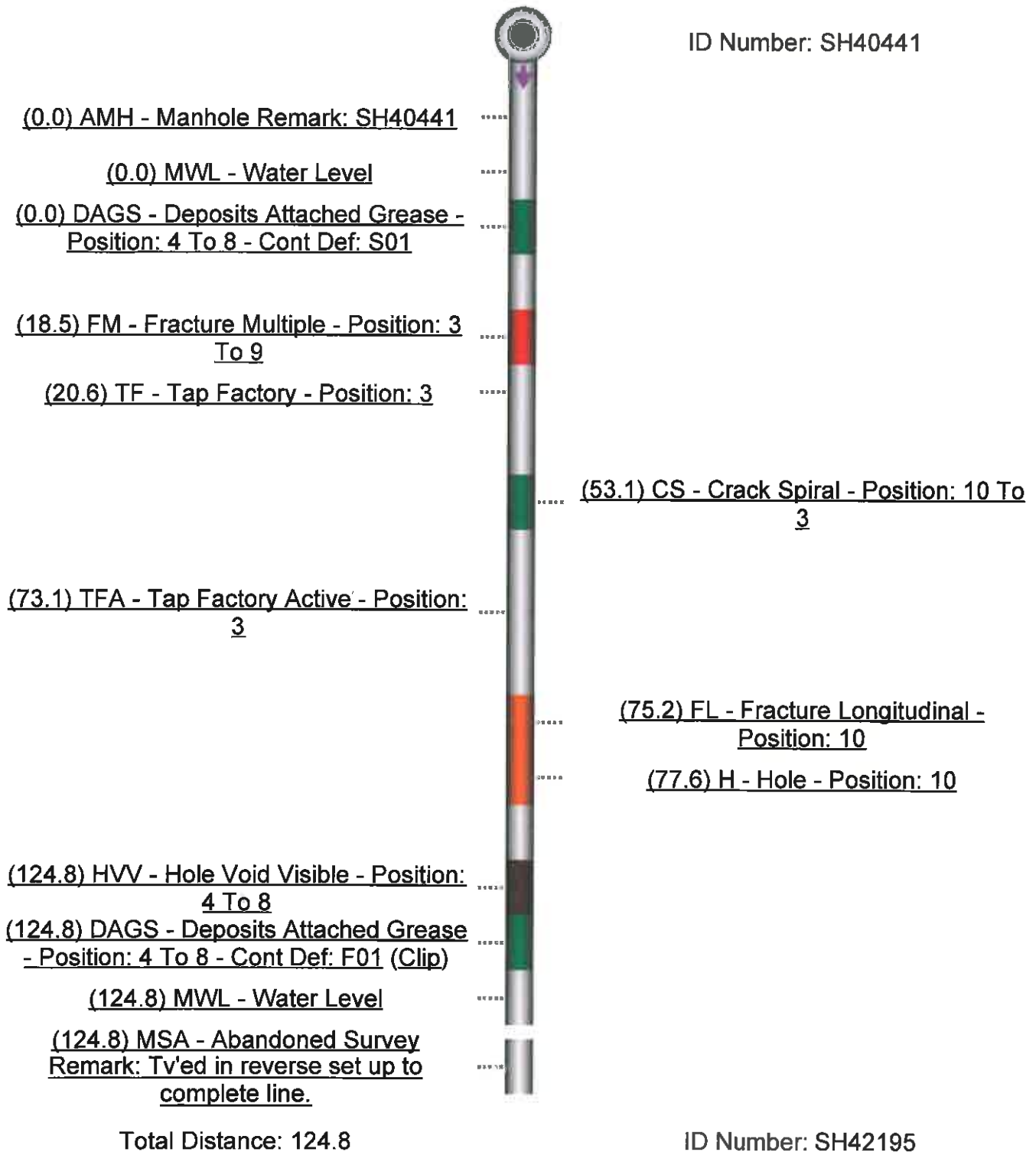


Project Name: SECTION 1131	
Date: 1/9/2012 2:03:00 PM	Pipe ID: SG16544
Street: LAFAYETTE STREET	Upstream MH: SH40441
Length Surveyed: 124.8	Downstream MH: SH42195
FROG Zone: 0	Direction of Survey: Downstream
Height (Diameter): 8	Material: Vitrified Clay Pipe

Severity
Light
Moderate
Average
Heavy
Severe





Created with the  **POSIM** report generator

Project Name: SECTION 1131	
Date: 1/9/2012 1:24:00 PM	Pipe ID: SG10529
Street: LAFAYETTE STREET	Upstream MH: SH42195
Length Surveyed: 573.4	Downstream MH: SH30225
FROG Zone: 0	Direction of Survey: Downstream
Height (Diameter): 8	Material: Vitrified Clay Pipe

Severity
Light
Moderate
Average
Heavy
Severe

ID Number: SH42195

(0.0) AMH - Manhole Remark: SH42195

(0.0) MWL - Water Level

(0.0) DAGS - Deposits Attached Grease - Position: 4 To 8 - Cont Def: S01

(0.0) TFA - Tap Factory Active - Position: 3

(7.1) HVV - Hole Void Visible - Position: 4 To 8 Remark: Marked out for repair. 6' deep. C.I. Seminole Dr.

(26.2) CL - Crack Longitudinal - Position: 10

(35.9) CL - Crack Longitudinal - Position: 2

(89.4) TFA - Tap Factory Active - Position: 3

(99.6) TBA - Tap Break-in Active - Position: 3

(104.3) CL - Crack Longitudinal - Position: 1

(119.4) CL - Crack Longitudinal - Position: 9

(193.2) CL - Crack Longitudinal - Position: 3

(221.5) TFA - Tap Factory Active - Position: 3

(223.5) FL - Fracture Longitudinal - Position: 10

(260.4) CL - Crack Longitudinal - Position: 9



(318.6) CL - Crack Longitudinal - Position:  
4

(397.3) TBA - Tap Break-in Active -  
Position: 3

(399.2) FH2 - Fracture Longitudinal Hinge.  
2 - Position: 4 To 8

(475.3) FH2 - Fracture Longitudinal Hinge.  
2 - Position: 4 To 8

(501.1) TBA - Tap Break-in Active -  
Position: 3

(518.5) RMJ - Roots Medium Joint -  
Position: 4 To 10

(549.4) RMJ - Roots Medium Joint -  
Position: 4

(573.2) DAGS - Deposits Attached Grease  
- Position: 4 To 8 - Cont Def: F01 (Clip)

(573.2) MWL - Water Level

(573.4) AMH - Manhole Remark: SH30225  
Line has several cracks and fractures  
throughout. Line has a broken spot  
marked out for repair.

Total Distance: 573.4

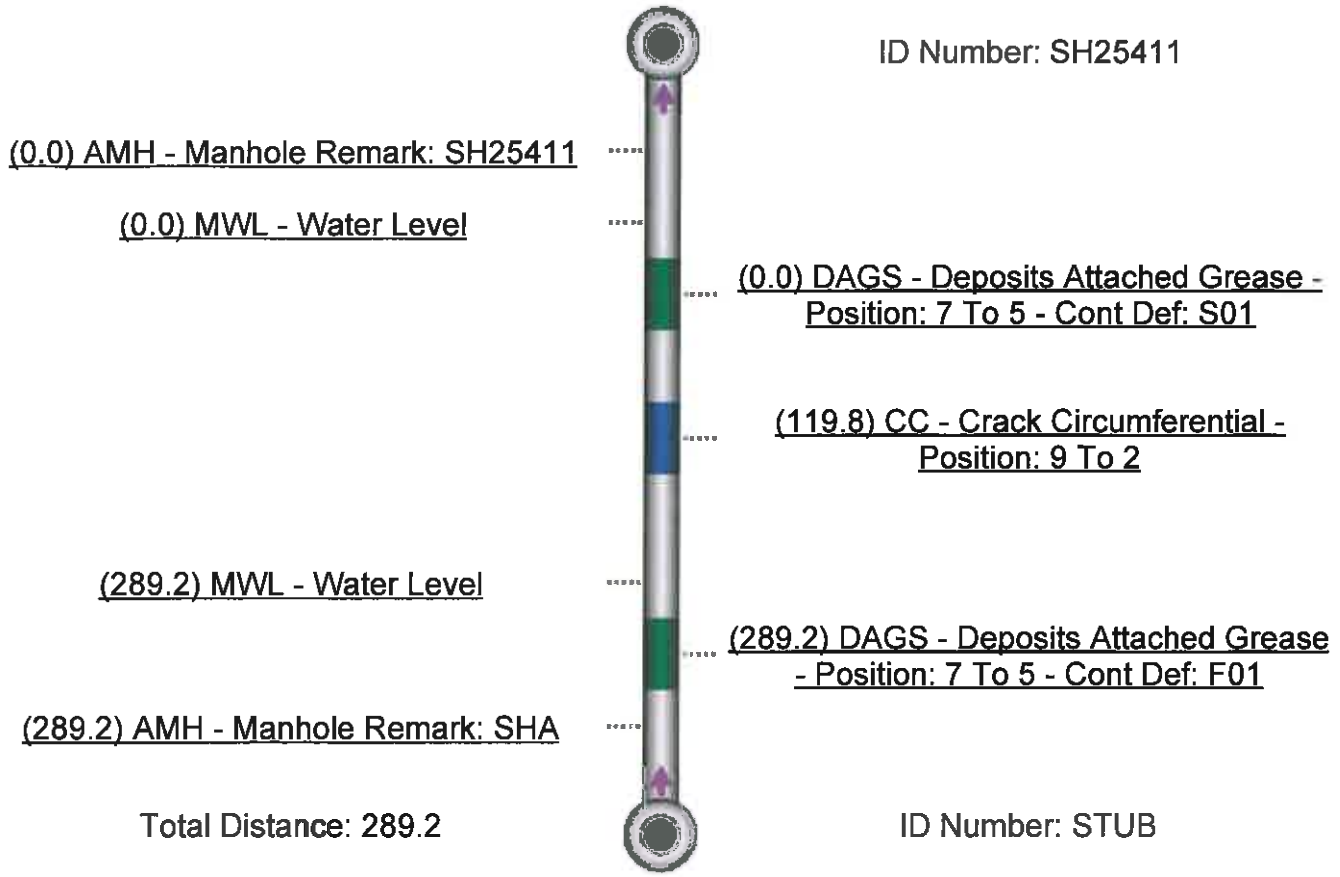


ID Number: SH30225

Created with the  report generator

<b>Project Name: SECTION 1132</b>	
<b>Date:</b> 12/8/2011 8:15:00 AM	<b>Pipe ID:</b> SG17504
<b>Street:</b> LAFAYETTE STREET	<b>Upstream MH:</b> STUB
<b>Length Surveyed:</b> 289.2	<b>Downstream MH:</b> SH25411
<b>FROG Zone:</b> 0	<b>Direction of Survey:</b> Upstream
<b>Height (Diameter):</b> 8	<b>Material:</b> Vitrified Clay Pipe

Severity
Light
Moderate
Average
Heavy
Severe



Created with the  report generator

Project Name: SECTION 1131	
Date: 3/2/2012 11:58:00 AM	Pipe ID: SG7331
Street: LAFAYETTE ST	Upstream MH: SH894600
Length Surveyed: 507.7	Downstream MH: SH27602
FROG Zone: 0	Direction of Survey: Downstream
Height (Diameter): 8	Material: Vitrified Clay Pipe

Severity
Light
Moderate
Average
Heavy
Severe

ID Number: SH894600



(0.0) AMH - Manhole Remark: SH UNKNOWN. MANHOLE, RING AND COVER OK.

(0.0) MWL - Water Level

(0.0) DAGS - Deposits Attached Grease - Position: 8 To 4 - Cont Def: S01

(5.8) MWLS - Water Level Sag - Cont Def: S02

(45.0) MWLS - Water Level Sag - Cont Def: F02

(62.9) MWLS - Water Level Sag - Cont Def: S03

(118.9) TBA - Tap Break-in Active - Position: 3 Remark: PVC WITH GREASE.

(126.0) LD - Alignment Down

(128.6) TF - Tap Factory - Position: 3

(131.2) MWLS - Water Level Sag - Cont Def: F03

(135.4) MWLS - Water Level Sag - Cont Def: S04

(169.1) MMC - Material Change Remark: PVC

(176.5) MMC - Material Change Remark: VCP

(213.2) MWLS - Water Level Sag - Cont Def: F04

(219.5) MWLS - Water Level Sag

(326.9) CL - Crack Longitudinal - Position: 12

(374.5) TFA - Tap Factory Active - Position: 3

(479.5) TFA - Tap Factory Active - Position: 3

(490.2) CM - Crack Multiple - Position: 4 To 12

(504.3) TFA - Tap Factory Active - Position: 3

(507.7) MSA - Abandoned Survey Remark: RAN OUT OF CABLE. REVERSAL REQUIRED. SH27602 DON'T EXIST.

Total Distance: 507.7



(401.2) CL - Crack Longitudinal - Position: 10

(459.3) CM - Crack Multiple - Position: 10 To 4

(487.5) CS - Crack Spiral - Position: 10 To 4

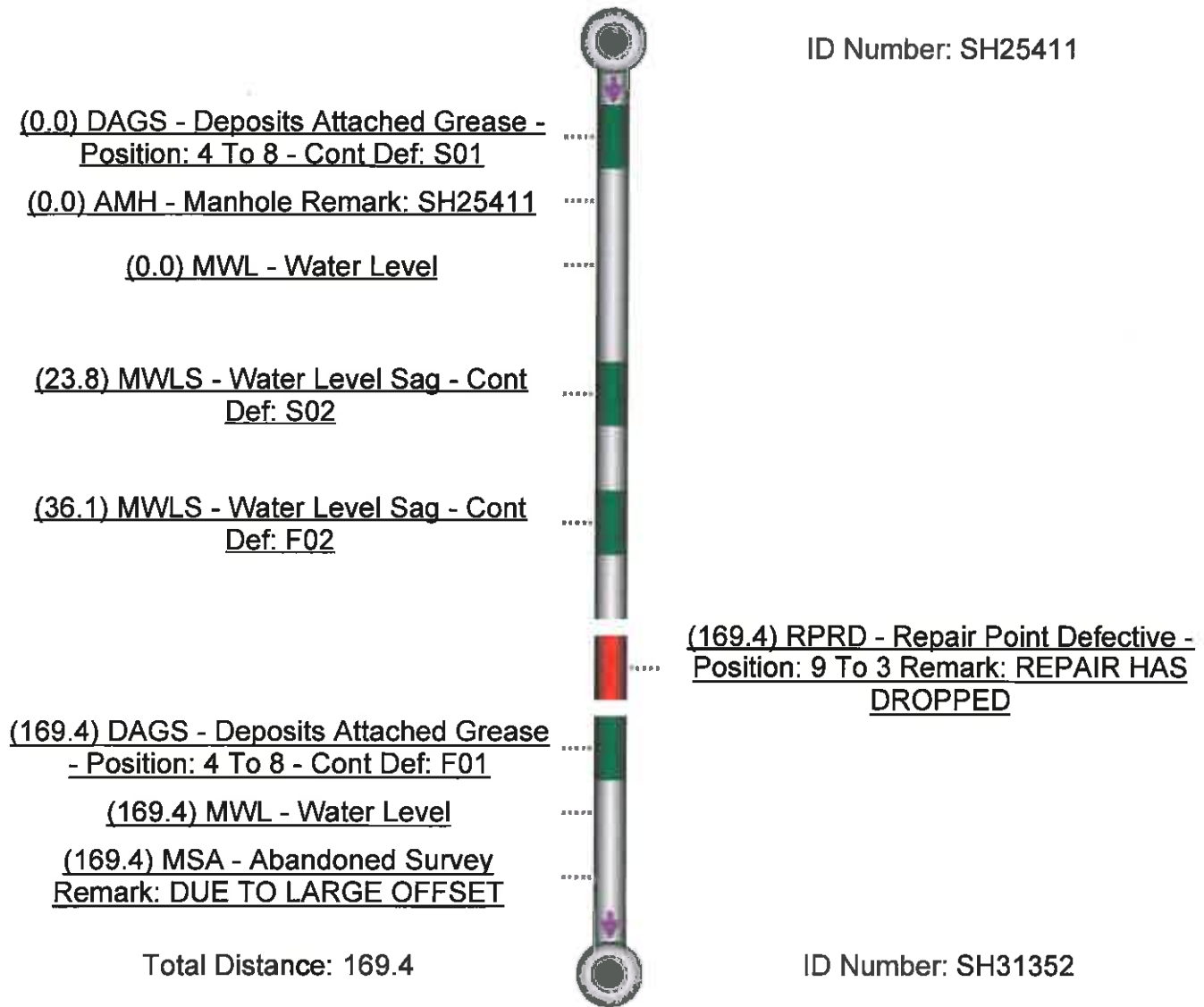
(507.7) DAGS - Deposits Attached Grease - Position: 8 To 4 - Cont Def: F01

ID Number: SH27602

Created with the  POSM report generator

Project Name: SECTION 1132	
Date: 12/8/2011 8:48:00 AM	Pipe ID: SG21891
Street: LAFAYETTE STREET	Upstream MH: SH25411
Length Surveyed: 169.4	Downstream MH: SH31352
FROG Zone: 0	Direction of Survey: Downstream
Height (Diameter): 8	Material: Vitrified Clay Pipe

Severity
Light
Moderate
Average
Heavy
Severe



Created with the  POSM report generator



Project Name: mh loc	
Date: 6/11/2010 8:14:00 AM	Pipe ID: SG6375
Street: Lafayette St	Upstream MH: SH31352
Length Surveyed: 36	Downstream MH: SH26319
FROG Zone: 0	Direction of Survey: Downstream
Height (Diameter): 8	Material: Vitrified Clay Pipe

Severity
Light
Moderate
Average
Heavy
Severe



Created with the  report generator