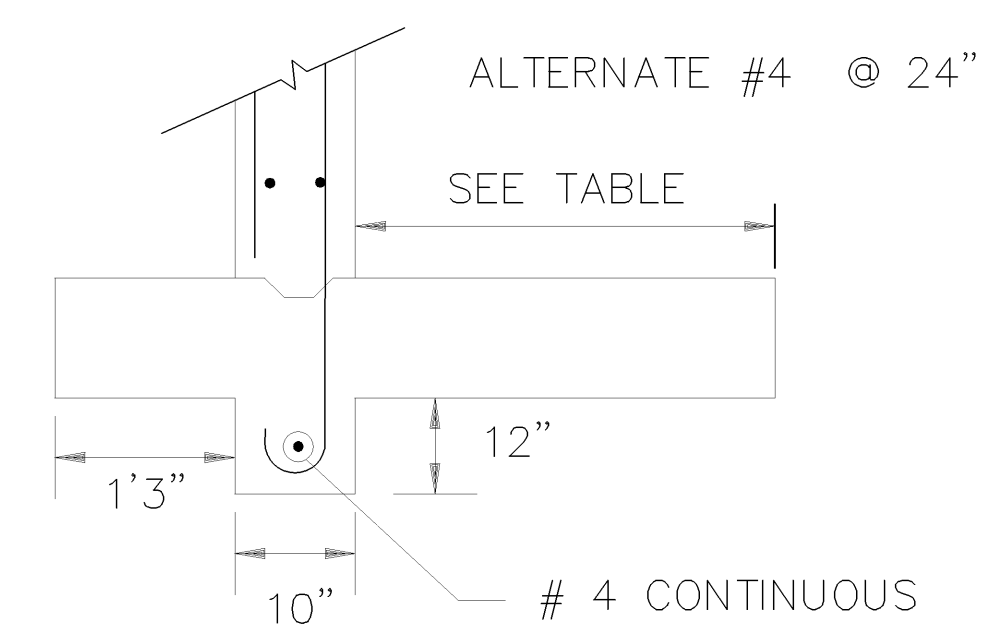


WALL SECTIONS	A	B	C	D	KEY
1	10"	1'3"	1'4"	12"	YES
2	10"	1'3"	2'5"	12"	YES
3	10"	1'3"	2'8"	12"	YES
4	12"	2'0"	3'6"	24"	YES *

NOTES:

- BEFORE PLACING FOOTING, SUBGRATE TO BE COMPACTED TO 98% MODIFIED PROCTOR.
- PROVIDE C.J. @ 25' O.C. AND EXPANSION JOINTS @ 125' O.C.
- CONTRACTOR TO PROVIDE (2) PARALLEL #4 BARS, 6 INCHES APART & UTILIZING 12" LAP, AROUND THE PERIMETER OF THE OPENING AT THE LOCATION OF THE 42" CROSS DRAIN THROUGH THE RETAINING WALL (STA. 62+61). STEEL SHALL BE INCLUDED IN THE PRICE FOR THE RETAINING WALL.

* VERTICAL STEEL TO BE #5 @ 12"



TYPICAL KEY SECTION

INITIAL	DATE	NO.	BY	REVISIONS	DATE
		A	CED	NEW SHEET ADDITION	3/26/10



325 JOHN KNOX RD. BLDG. 200
TALLAHASSEE, FLORIDA 32308 (850)656-1212
ENGINEERING BUSINESS: EB-0000340

CLEVE E. DRYDEN
P.E. LICENSE NO. 33115

PROJECT

BUCKLAKE ROAD

SHEET TITLE

RETAINING WALL DETAILS

COMPUTER FILE - GRAVITY WALL.dwg
FILE NO. 50908.09

PROJECT NO. 50908.09

SHEET
81B

OF 81