

NEW COUNTY WORK BUILDING

J. LEE VAUSE PARK, LEON COUNTY, FLORIDA

LEON COUNTY

PUBLIC WORKS DEPARTMENT

2280 MICCOSUKEE ROAD, TALLAHASSEE, FLORIDA 32308
 PHONE (850) 606-1500 * FAX (805) 606-1501

McCarthy and Associates
 A DIVISION OF PENNONI ASSOCIATES, INC.

PRIME CONSULTANT, CIVIL & STRUCTURAL ENGINEERS
 1705 SOUTH GADSDEN STREET, SUITE 100
 TALLAHASSEE, FL 32301
 PHONE: 850-671-7230

Consultants

Architecture: Workshop 131, Inc.
 Environmental Permitting and Surveying: Poole Engineering and Surveying, Inc.
 Mechanical & Plumbing Engineer: McGinniss & Fleming Engineering, Inc.
 Electrical Engineer: McGinniss & Fleming Engineering, Inc.

INDEX TO DRAWINGS

X0.1	TITLE SHEET	
C0.1	EXISTING CONDITIONS & REMOVAL PLAN	
C1.0	SITE LAYOUT & GRADING PLAN	
C2.0	EROSION CONTROL & CONST. LIMITS PLAN	
C3.1	SITE DETAILS	
C3.2	PAVEMENT DETAILS	
U1.0	UTILITY PLAN	
L1.0	LANDSCAPING PLAN	
L3.1	LANDSCAPING DETAILS	
A1.0	GENERAL NOTES AND SCHEDULES	
A1.1	FLOOR AND ROOF PLANS	
A1.2	REFLECTED CEILING AND LIGHT STORAGE PLANS	
A2.1	ELEVATIONS	
A3.1	BUILDING SECTIONS	
A3.2	PARTITION TYPES	
S0.1	STRUCTURAL NOTES AND FOUNDATION DETAILS	
S1.0	FOUNDATION & SLAB-ON-GRADE PLAN	
S3.1	SLAB-ON-GRADE DETAILS	
M1.0	MECHANICAL HVAC PLAN AND DETAILS	
E1.0	ELECTRICAL LEGEND AND NOTES	
E2.0	ELECTRICAL POWER AND LIGHTING PLANS	
E3.0	ELECTRICAL DETAILS	
P1.0	PLUMBING LEGEND AND NOTES	
P1.1	PLUMBING EQUIPMENT SCHEDULES	
P2.0	PLUMBING FLOOR PLAN	
P3.0	PLUMBING DETAILS	

APPLICABLE CODES

- Florida Building Code, Building (FBC-B) 6th Edition (2017)
- Florida Building Code, Mechanical (FBC-M) 6th Edition (2017)
- Florida Building Code, Fuel Gas (FBC-FG) 6th Edition (2017)
- Florida Building Code, Plumbing (FBC-P) 6th Edition (2017)
- Florida Assessability Code (FACBC) 6th Edition (2017)
- Florida Fire Prevention Code (FFPC) 6th Edition (2017)
- National Electric Code (NEC) 2014 Edition

DESIGN DATA

See Sheet A1.0 for Design Data

PROPERTY INFORMATION
 LEON COUNTY TAX PARCEL NUMBER: 24-29-20-851-000-0
 PROPERTY ADDRESS: 6024 OLD BAMBRIDGE ROAD
 ACREAGE: 26.70 ACRES (0.52 ACRES DISTURBED)
 UTILITY PROVIDERS:
 WATER SERVICE: TALQUIN ELECTRIC COOPERATIVE
 ELECTRICAL SERVICE: TALQUIN ELECTRIC COOPERATIVE
 SEWER SERVICE: PROPOSED SEPTIC TANK



VICINITY MAP

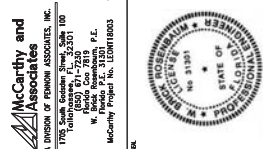
McCarthy and Associates
 A DIVISION OF PENNONI ASSOCIATES, INC.
 2280 MICCOSUKEE ROAD, TALLAHASSEE, FLORIDA 32308
 PHONE: 850-671-7230
 FAX: 850-606-1501
 W. Lee Vause Park, Leon County, Florida
 McCarthy Project No. E20170003



NEW COUNTY WORK BUILDING
 J. LEE VAUSE PARK, LEON COUNTY, FLORIDA
 LEON COUNTY PUBLIC WORKS DEPARTMENT
 2280 MICCOSUKEE ROAD, TALLAHASSEE, FLORIDA 32308

DATE	NO.	REVISIONS

PROJECT	LEON COUNTY
DRAWN BY	DATE
CHECKED BY	APPROVED BY
BUILDING	FLOOR
AREA	SCALE
TITLE SHEET	
X0.1	
SCALE	SHEET OF
AS NOTED	1655
	1656
	1657
	1658
	1659



NEW COUNTY WORK BUILDING

J. LEE VAUSE PARK, LEON COUNTY, FLORIDA

LEON COUNTY PUBLIC WORKS DEPARTMENT
2280 Miccosukee Road, Tallahassee, Florida 32308

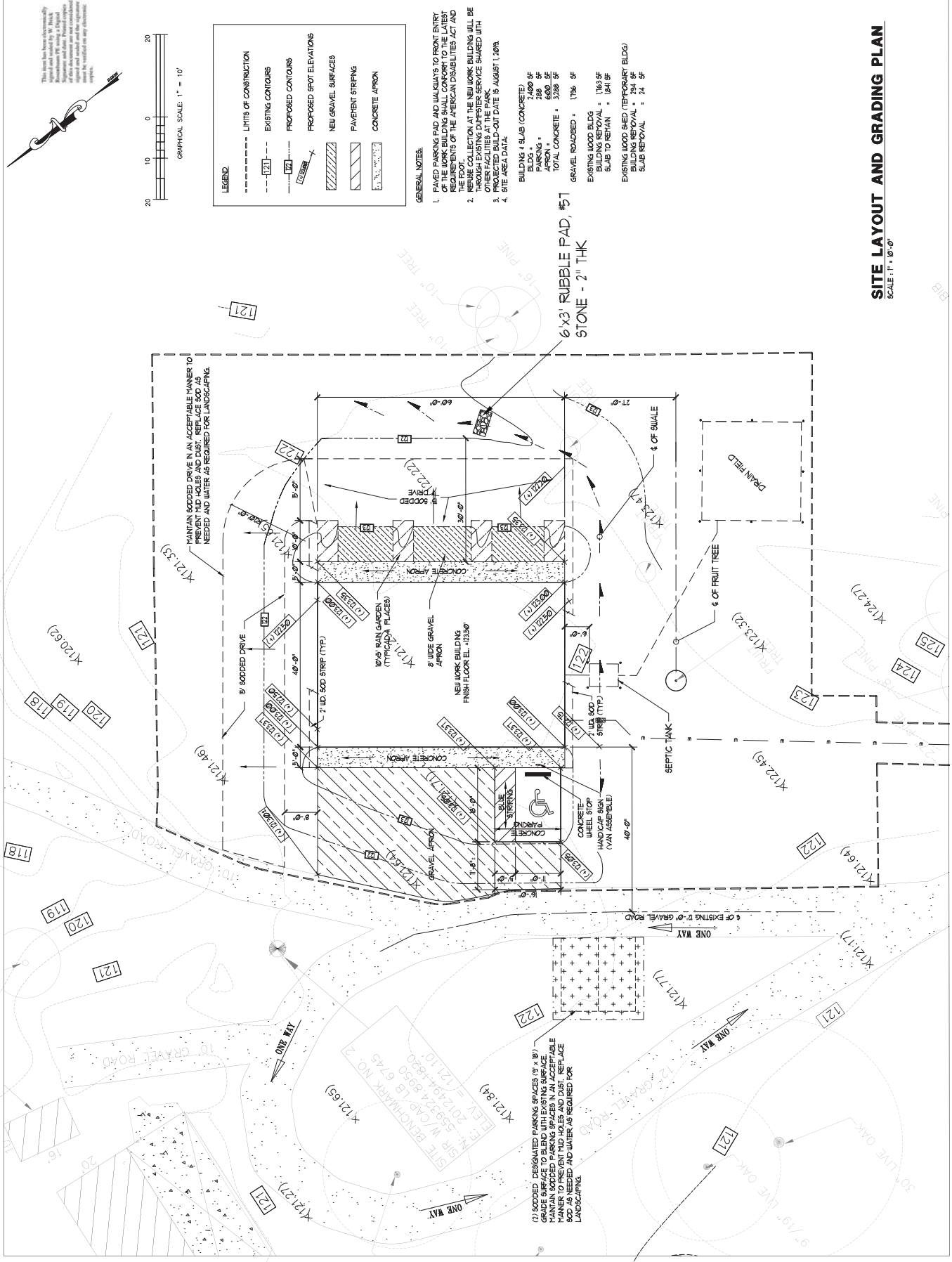
SITE LAYOUT AND GRADING PLAN

SCALE: 1" = 10'-0"

PROJECT: LEON18000
DRAWN BY: DATE: 05/20/18
APPROVED BY: DATE: 05/20/18
BUILDING: FLOOR: AREA: 1500
C1.0
SCALE: AS NOTED SHEET OF 318

NO.	DATE	REVISIONS

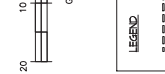
THIS PLAN HAS BEEN PREPARED BY AN ENGINEER AND THE INFORMATION IS RELIED UPON BY THE USER. THE ENGINEER DOES NOT WARRANT OR GUARANTEE THE ACCURACY OR COMPLETENESS OF THE INFORMATION. THE USER SHALL BE RESPONSIBLE FOR OBTAINING ALL NECESSARY PERMITS AND APPROVALS. THE USER SHALL BE RESPONSIBLE FOR OBTAINING ALL NECESSARY INFORMATION FROM THE LOCAL AGENCIES AND THE USER SHALL BE RESPONSIBLE FOR OBTAINING ALL NECESSARY INFORMATION FROM THE LOCAL AGENCIES. THE USER SHALL BE RESPONSIBLE FOR OBTAINING ALL NECESSARY INFORMATION FROM THE LOCAL AGENCIES. THE USER SHALL BE RESPONSIBLE FOR OBTAINING ALL NECESSARY INFORMATION FROM THE LOCAL AGENCIES.



- #### GENERAL NOTES:
1. PAVED PARKING PAD AND WALKWAYS TO FRONT ENTRY OF NEW WORK BUILDING SHALL CONFORM TO THE LATEST REQUIREMENTS OF THE AMERICAN DISABILITIES ACT AND THE ADA.
 2. REUSE COLLECTION AT THE NEW WORK BUILDING WILL BE THROUGH EXISTING DRIVEWAY SERVICE SHARED WITH EXISTING DRIVEWAY SERVICE SHARED WITH EXISTING DRIVEWAY SERVICE SHARED WITH EXISTING DRIVEWAY SERVICE.
 3. PROJECTED BUILD-OUT DATE IS AUGUST 1, 2018.
 4. SITE AREA DATA:
BUILDING & SLAB (CONCRETE): 2,400 SF
BLDG. + SLAB (CONCRETE): 2,400 SF
PARKING: 288 SF
APRON: 600 SF
TOTAL CONCRETE: 3,288 SF
GRAVEL ROADED: 1,136 SF
EXISTING WOOD BLEK: 164 SF
BUILDING REMOVAL: 184 SF
SLAB TO REMAIN: 184 SF
EXISTING WOOD BLEK (TEMPORARY BLDG): 164 SF
BUILDING REMOVAL: 184 SF
SLAB REMOVAL: 24 SF

This plan has been electronically signed and dated by the professional engineer. It is the responsibility of the user to verify that the information is correct and that the information is current. The user shall be responsible for obtaining all necessary permits and approvals from the local agencies.

LEGEND	
(---) (---)	LIMITS OF CONSTRUCTION
(---) (---)	EXISTING CONTOURS
(---) (---)	PROPOSED CONTOURS
(---) (---)	PROPOSED SPOT ELEVATIONS
(---) (---)	NEW GRAVEL SURFACES
(---) (---)	PAVED PARKING
(---) (---)	CONCRETE APRON



MAINTAIN SODDED DRIVE IN AN ACCEPTABLE MANNER TO PREVENT HOLES AND DUST. REPLACE SOD AS NEEDED AND WATER AS REQUIRED FOR LANDSCAPING.

(2) SODDED DESIGNATED PARKING SPACES (9' x 18') SHALL BE MAINTAINED IN AN ACCEPTABLE MANNER TO PREVENT HOLES AND DUST. REPLACE SOD AS NEEDED AND WATER AS REQUIRED FOR LANDSCAPING.

SITE BENCHMARK NO. 2
BRG WITH (4) 6" DIA. SOD
ELEV. = 121.84
ELEV. = 121.49
ELEV. = 121.10
ELEV. = 121.85



NEW COUNTY WORK BUILDING

J. LEE VAUSE PARK, LEON COUNTY, FLORIDA
 LEON COUNTY PUBLIC WORKS DEPARTMENT
 2200 Miccosukee Road, Tallahassee, Florida 32308

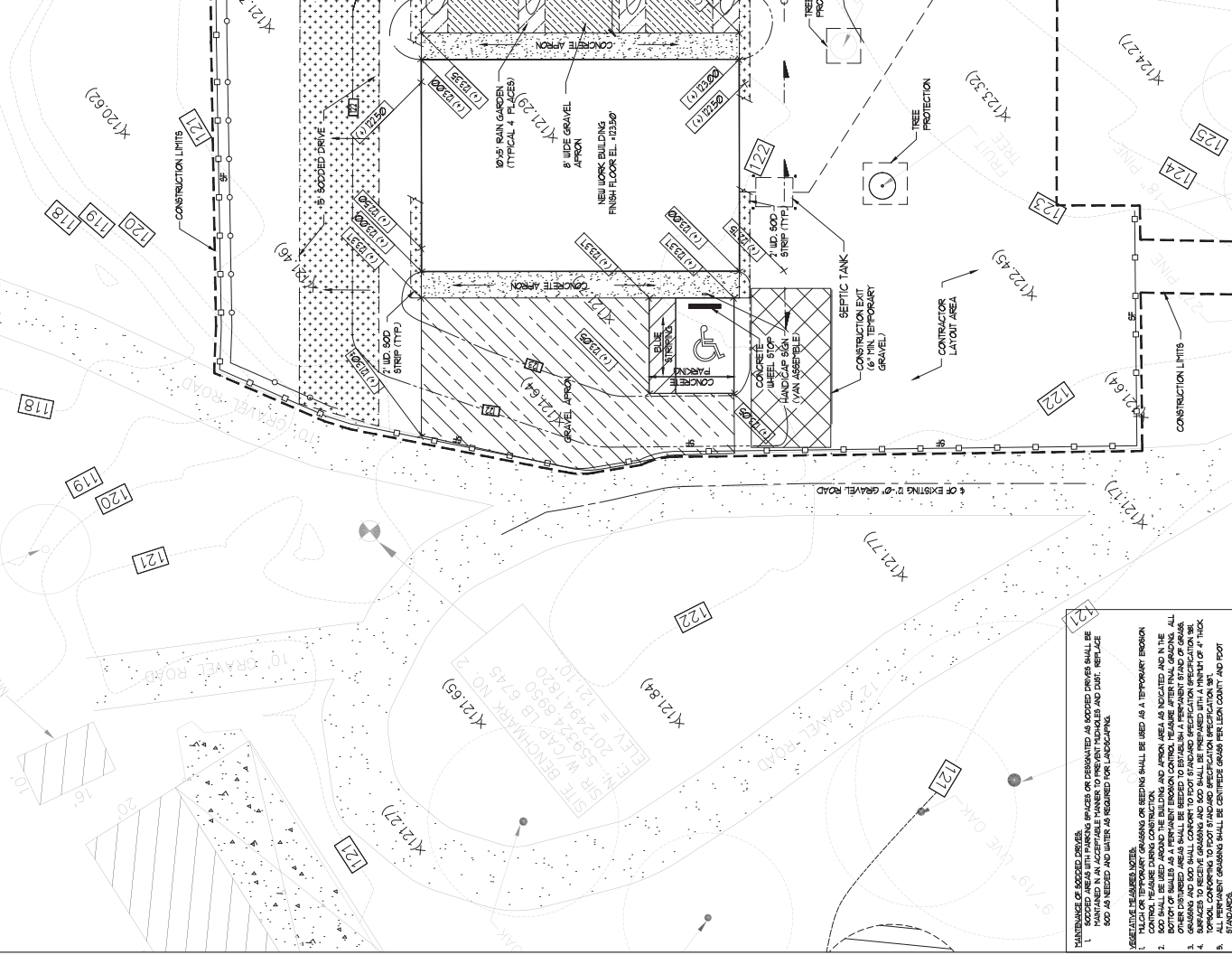
DATE	NO.	REVISIONS



LEGEND	
---	LIMITS OF CONSTRUCTION
---	EXISTING CONTOURS
---	PROPOSED CONTOURS
---	PROPOSED SPOT ELEVATIONS
---	NEW GRAVEL SURFACES
---	PAVEMENT STRIPES
---	CONCRETE APRON
---	PERMANENT SOD
---	SILT FENCE
---	HAY BALES

EROSION CONTROL NOTES:

1. ALL CONSTRUCTION SHALL CONFORM TO LEON COUNTY STANDARDS AND SPECIFICATIONS.
2. BMPs MUST BE IN PLACE PRIOR TO CLEANING, RESHAPE OR PLAN.
3. CONTRACTORS ARE RESPONSIBLE TO REMOVE OR CLEAN OUT ALL CRACKS OR ANY OTHER TYPE OF DEBRIS THAT COULD CAUSE BLOCKAGE TO ANY BMP OR CITY COUNTY DRAINAGE INFRASTRUCTURE TO INCLUDE SWALE, MANHOLE OR OTHER INFRASTRUCTURE. THE CONTRACTOR SHALL MAINTAIN THE BMP'S PROPOSED IN CITY COUNTY AND MAINTAIN THE BMP'S TO BE RESPONSIBLE FOR ANY DAMAGE TO THE BMP'S AND UTILITIES DUE TO NON-COMPLIANCE WITH LEON COUNTY STANDARDS AND SPECIFICATIONS FOR THE INSTALLATION OF EROSION AND SEDIMENT CONTROL MEASURES AND PRACTICES PRIOR TO OR CONCURRENT WITH LAND-CONVERSION ACTIVITIES.
4. ALL EROSION AND SEDIMENT CONTROL MEASURES SHALL BE DESIGNED, CONSTRUCTED, MAINTAINED AND OPERATED IN ACCORDANCE WITH THE PLANS AND SPECIFICATIONS AND LEON COUNTY STANDARDS.
5. SWALE PROTECTION MEASURES SHALL BE MAINTAINED AT ALL TIMES IF FULL IMPLEMENTATION OF THE APPROVED PLAN DOES NOT PROVIDE FOR EFFECTIVE EROSION CONTROL. ADDITIONAL EROSION AND SEDIMENT CONTROL MEASURES SHALL BE INSTALLED IMMEDIATELY AFTER THE ESTABLISHMENT OF CONSTRUCTION ENTRANCES AND EXITS.
6. ALL PERIMETER EROSION CONTROL DEVICES AND BERM-OUTLET MANAGEMENT SHALL BE INSTALLED IMMEDIATELY AFTER THE ESTABLISHMENT OF CONSTRUCTION ENTRANCES AND EXITS.
7. THE LOCATION OF CERTAIN EROSION CONTROL DEVICES MAY VARY FROM THE LOCATION SHOWN ON THE DRAWING TO AVOID OBSTRUCTION OF EXISTING UTILITIES OR OTHER INFRASTRUCTURE. THE CONTRACTOR SHALL BE RESPONSIBLE FOR VERIFYING THE LOCATION OF ALL UTILITIES AND OTHER INFRASTRUCTURE PRIOR TO CONSTRUCTION.
8. ALL EROSION CONTROL DEVICES SHALL BE CONSTRUCTED IN ACCORDANCE WITH THE PLANS AND SPECIFICATIONS AND LEON COUNTY STANDARDS.
9. CONSTRUCTION ENTRANCES SHALL BE MAINTAINED IN ACCORDANCE WITH THE FOLLOWING:
 1. WEARING SURFACES SHALL BE CLEANED PRIOR TO REMOVAL AND SHALL BE MAINTAINED AS SHOWN ON THE PLAN.
 2. WEARING SURFACES SHALL BE MAINTAINED AS SHOWN ON THE PLAN.
 3. WEARING SURFACES SHALL BE MAINTAINED AS SHOWN ON THE PLAN.
 4. WEARING SURFACES SHALL BE MAINTAINED AS SHOWN ON THE PLAN.
 5. WEARING SURFACES SHALL BE MAINTAINED AS SHOWN ON THE PLAN.
 6. WEARING SURFACES SHALL BE MAINTAINED AS SHOWN ON THE PLAN.
 7. WEARING SURFACES SHALL BE MAINTAINED AS SHOWN ON THE PLAN.
 8. WEARING SURFACES SHALL BE MAINTAINED AS SHOWN ON THE PLAN.
 9. WEARING SURFACES SHALL BE MAINTAINED AS SHOWN ON THE PLAN.
 10. WEARING SURFACES SHALL BE MAINTAINED AS SHOWN ON THE PLAN.
 11. WEARING SURFACES SHALL BE MAINTAINED AS SHOWN ON THE PLAN.
 12. WEARING SURFACES SHALL BE MAINTAINED AS SHOWN ON THE PLAN.
 13. WEARING SURFACES SHALL BE MAINTAINED AS SHOWN ON THE PLAN.
 14. WEARING SURFACES SHALL BE MAINTAINED AS SHOWN ON THE PLAN.
 15. WEARING SURFACES SHALL BE MAINTAINED AS SHOWN ON THE PLAN.
 16. WEARING SURFACES SHALL BE MAINTAINED AS SHOWN ON THE PLAN.
 17. WEARING SURFACES SHALL BE MAINTAINED AS SHOWN ON THE PLAN.
 18. WEARING SURFACES SHALL BE MAINTAINED AS SHOWN ON THE PLAN.
 19. WEARING SURFACES SHALL BE MAINTAINED AS SHOWN ON THE PLAN.
 20. WEARING SURFACES SHALL BE MAINTAINED AS SHOWN ON THE PLAN.
10. WEARING SURFACES SHALL BE MAINTAINED AS SHOWN ON THE PLAN.
11. WEARING SURFACES SHALL BE MAINTAINED AS SHOWN ON THE PLAN.
12. WEARING SURFACES SHALL BE MAINTAINED AS SHOWN ON THE PLAN.
13. WEARING SURFACES SHALL BE MAINTAINED AS SHOWN ON THE PLAN.
14. WEARING SURFACES SHALL BE MAINTAINED AS SHOWN ON THE PLAN.
15. WEARING SURFACES SHALL BE MAINTAINED AS SHOWN ON THE PLAN.
16. WEARING SURFACES SHALL BE MAINTAINED AS SHOWN ON THE PLAN.
17. WEARING SURFACES SHALL BE MAINTAINED AS SHOWN ON THE PLAN.
18. WEARING SURFACES SHALL BE MAINTAINED AS SHOWN ON THE PLAN.
19. WEARING SURFACES SHALL BE MAINTAINED AS SHOWN ON THE PLAN.
20. WEARING SURFACES SHALL BE MAINTAINED AS SHOWN ON THE PLAN.



EROSION CONTROL AND CONSTRUCTION LIMITS
 SCALE: 1" = 10'-0"

LEGEND:

- LIMITS OF CONSTRUCTION
- EXISTING CONTOURS
- PROPOSED CONTOURS
- PROPOSED SPOT ELEVATIONS
- NEW GRAVEL SURFACES
- PAVEMENT STRIPES
- CONCRETE APRON
- PERMANENT SOD
- SILT FENCE
- HAY BALES

EROSION CONTROL NOTES:

1. ALL CONSTRUCTION SHALL CONFORM TO LEON COUNTY STANDARDS AND SPECIFICATIONS.
2. BMPs MUST BE IN PLACE PRIOR TO CLEANING, RESHAPE OR PLAN.
3. CONTRACTORS ARE RESPONSIBLE TO REMOVE OR CLEAN OUT ALL CRACKS OR ANY OTHER TYPE OF DEBRIS THAT COULD CAUSE BLOCKAGE TO ANY BMP OR CITY COUNTY DRAINAGE INFRASTRUCTURE TO INCLUDE SWALE, MANHOLE OR OTHER INFRASTRUCTURE. THE CONTRACTOR SHALL MAINTAIN THE BMP'S PROPOSED IN CITY COUNTY AND MAINTAIN THE BMP'S TO BE RESPONSIBLE FOR ANY DAMAGE TO THE BMP'S AND UTILITIES DUE TO NON-COMPLIANCE WITH LEON COUNTY STANDARDS AND SPECIFICATIONS FOR THE INSTALLATION OF EROSION AND SEDIMENT CONTROL MEASURES AND PRACTICES PRIOR TO OR CONCURRENT WITH LAND-CONVERSION ACTIVITIES.
4. ALL EROSION AND SEDIMENT CONTROL MEASURES SHALL BE DESIGNED, CONSTRUCTED, MAINTAINED AND OPERATED IN ACCORDANCE WITH THE PLANS AND SPECIFICATIONS AND LEON COUNTY STANDARDS.
5. SWALE PROTECTION MEASURES SHALL BE MAINTAINED AT ALL TIMES IF FULL IMPLEMENTATION OF THE APPROVED PLAN DOES NOT PROVIDE FOR EFFECTIVE EROSION CONTROL. ADDITIONAL EROSION AND SEDIMENT CONTROL MEASURES SHALL BE INSTALLED IMMEDIATELY AFTER THE ESTABLISHMENT OF CONSTRUCTION ENTRANCES AND EXITS.
6. ALL PERIMETER EROSION CONTROL DEVICES AND BERM-OUTLET MANAGEMENT SHALL BE INSTALLED IMMEDIATELY AFTER THE ESTABLISHMENT OF CONSTRUCTION ENTRANCES AND EXITS.
7. THE LOCATION OF CERTAIN EROSION CONTROL DEVICES MAY VARY FROM THE LOCATION SHOWN ON THE DRAWING TO AVOID OBSTRUCTION OF EXISTING UTILITIES OR OTHER INFRASTRUCTURE. THE CONTRACTOR SHALL BE RESPONSIBLE FOR VERIFYING THE LOCATION OF ALL UTILITIES AND OTHER INFRASTRUCTURE PRIOR TO CONSTRUCTION.
8. ALL EROSION CONTROL DEVICES SHALL BE CONSTRUCTED IN ACCORDANCE WITH THE PLANS AND SPECIFICATIONS AND LEON COUNTY STANDARDS.
9. CONSTRUCTION ENTRANCES SHALL BE MAINTAINED IN ACCORDANCE WITH THE FOLLOWING:
 1. WEARING SURFACES SHALL BE CLEANED PRIOR TO REMOVAL AND SHALL BE MAINTAINED AS SHOWN ON THE PLAN.
 2. WEARING SURFACES SHALL BE MAINTAINED AS SHOWN ON THE PLAN.
 3. WEARING SURFACES SHALL BE MAINTAINED AS SHOWN ON THE PLAN.
 4. WEARING SURFACES SHALL BE MAINTAINED AS SHOWN ON THE PLAN.
 5. WEARING SURFACES SHALL BE MAINTAINED AS SHOWN ON THE PLAN.
 6. WEARING SURFACES SHALL BE MAINTAINED AS SHOWN ON THE PLAN.
 7. WEARING SURFACES SHALL BE MAINTAINED AS SHOWN ON THE PLAN.
 8. WEARING SURFACES SHALL BE MAINTAINED AS SHOWN ON THE PLAN.
 9. WEARING SURFACES SHALL BE MAINTAINED AS SHOWN ON THE PLAN.
 10. WEARING SURFACES SHALL BE MAINTAINED AS SHOWN ON THE PLAN.
 11. WEARING SURFACES SHALL BE MAINTAINED AS SHOWN ON THE PLAN.
 12. WEARING SURFACES SHALL BE MAINTAINED AS SHOWN ON THE PLAN.
 13. WEARING SURFACES SHALL BE MAINTAINED AS SHOWN ON THE PLAN.
 14. WEARING SURFACES SHALL BE MAINTAINED AS SHOWN ON THE PLAN.
 15. WEARING SURFACES SHALL BE MAINTAINED AS SHOWN ON THE PLAN.
 16. WEARING SURFACES SHALL BE MAINTAINED AS SHOWN ON THE PLAN.
 17. WEARING SURFACES SHALL BE MAINTAINED AS SHOWN ON THE PLAN.
 18. WEARING SURFACES SHALL BE MAINTAINED AS SHOWN ON THE PLAN.
 19. WEARING SURFACES SHALL BE MAINTAINED AS SHOWN ON THE PLAN.
 20. WEARING SURFACES SHALL BE MAINTAINED AS SHOWN ON THE PLAN.
10. WEARING SURFACES SHALL BE MAINTAINED AS SHOWN ON THE PLAN.
11. WEARING SURFACES SHALL BE MAINTAINED AS SHOWN ON THE PLAN.
12. WEARING SURFACES SHALL BE MAINTAINED AS SHOWN ON THE PLAN.
13. WEARING SURFACES SHALL BE MAINTAINED AS SHOWN ON THE PLAN.
14. WEARING SURFACES SHALL BE MAINTAINED AS SHOWN ON THE PLAN.
15. WEARING SURFACES SHALL BE MAINTAINED AS SHOWN ON THE PLAN.
16. WEARING SURFACES SHALL BE MAINTAINED AS SHOWN ON THE PLAN.
17. WEARING SURFACES SHALL BE MAINTAINED AS SHOWN ON THE PLAN.
18. WEARING SURFACES SHALL BE MAINTAINED AS SHOWN ON THE PLAN.
19. WEARING SURFACES SHALL BE MAINTAINED AS SHOWN ON THE PLAN.
20. WEARING SURFACES SHALL BE MAINTAINED AS SHOWN ON THE PLAN.

McCarthy and Associates
 A DIVISION OF PENNON ASSOCIATES, INC.
 1705 South Woodson Avenue, Suite 100
 Tallahassee, Florida 32301
 (904) 941-2320
 W. Bruce Rosenberry, P.E.
 Professional Engineer
 License No. 12001
 McCarthy Project No. L20111003



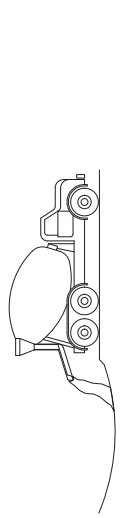
NEW COUNTY WORK BUILDING
 1 LEE VAUSE PARK, LEON COUNTY, FLORIDA
 LEON COUNTY PUBLIC WORKS DEPARTMENT
 2280 Miccosukee Road, Tallahassee, Florida 32308

NO.	DATE	REVISIONS

SILT FENCE PROPERTIES

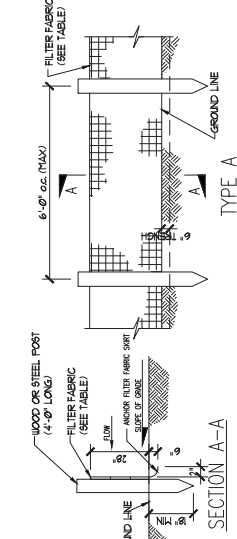
TYPE FENCE	A
Tensile Strength (Lbs. Min.) (ASTM D-4632)	WASP - 120 FILL - 100
Elongation (% MAX.) (ASTM D-4632)	40
AOS (Apparent Opening Size) (Max. Sieve Size) (ASTM D-4751)	F30
Flow Rate (Gal/Min./Sq. Ft.) (SD1-87)	25
Ultraviolet Stability (2) (ASTM D-4632 after 300 hours weathering in accordance with ASTM D-4355)	80
Bursting Strength (PSI Min.) (ASTM D-3786 Diagram Bursting Strength Tester)	175
Minimum Fabric Width (Inches)	36
Fabric Reinforcement	NONE
Type of Post	SOFT WOOD (3"x4") SOFT WOOD (2"x4") OAK (1.5"x1.5") STEEL (1.38"/FT MIN)

NOTE: ALL SILT FENCE SHALL CONFORM TO THE FLORIDA DEPARTMENT OF TRANSPORTATION STANDARD SPECIFICATIONS.



DEGRADE WASHDOWN AREA AND EXCAVATE PIT LARGE ENOUGH TO CONTAIN WASHDOWN WATER. THIS MUST BE AWAY FROM STORM DRAINS AND WATERWAYS.
 ADVISE CONCRETE TRUCK DRIVERS OF THE DESIGNATED WASH-OUT AREAS BEFORE THEY START THE JOB.
 WASHDOWN CURB, HOPPER AND REAR OF VEHICLE ONLY. NO WASH OUT DRIFT.
 ENSURE THAT ALL WASHDOWN WATER STAYS IN PIT.
 DISPOSE OF SETTLED, HARDENED CONCRETE IN GARAGE WITH OTHER CONSTRUCTION DEBRIS.
 NEVER DISPOSE OF WASHDOWN WATER IN STREETS, STORM DRAINS OR STREAMS.
 SEE SHEETS C1B AND C1C FOR DESIGNATED WASHDOWN AREA

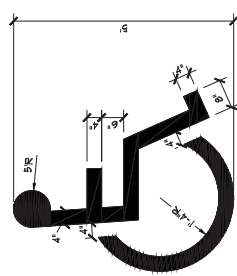
CONCRETE TRUCK WASHDOWN



TYPE A

SILT FENCE SEDIMENT BARRIER

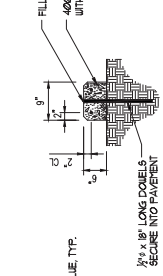
NO SCALE



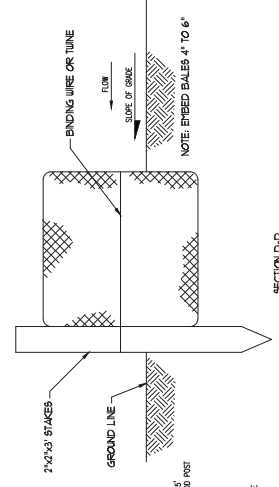
NOTE: UNIVERSAL SYMBOL OF ACCESSIBILITY SHALL BE IN ACCORDANCE WITH THE FOOT ROADWAY AND TRAFFIC DESIGN STANDARDS STANDARD INDEX 1746 AND THE NATIONAL UNIFORM TRAFFIC CONTROL DEVICE LATEST EDITIONS.

HANDICAP PAVEMENT MARKINGS

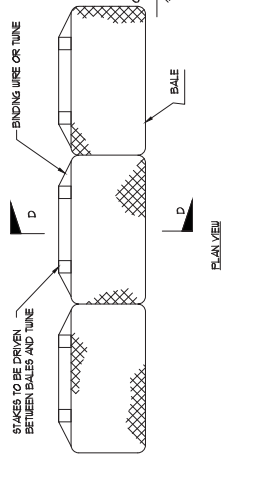
NO SCALE



CONCRETE WHEEL STOP DETAIL
 NO SCALE

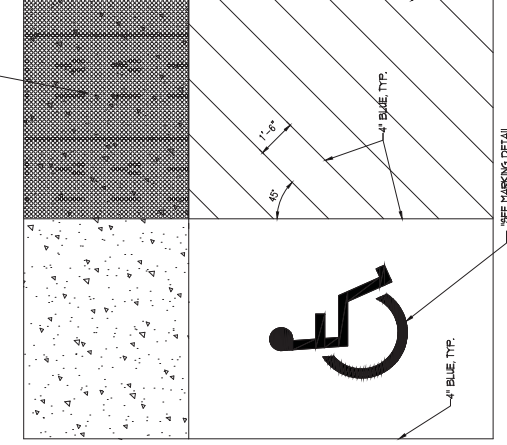


SECTION D-D



BALED STRAW SEDIMENT BARRIER

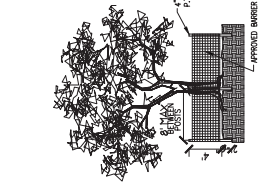
NO SCALE



HANDICAP PARKING PLAN

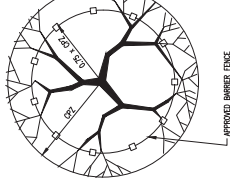
NO SCALE

NOTES:
 1. PROVIDE DETECTABLE WARNING TEXTURE CONSISTING OF RAISED TRUNCATED CONES PER FOOT STANDARD INDEX 304. DETECTIBLE WARNING SHALL BE 60 INCHES MINIMUM LONG AND 60 INCHES MINIMUM WIDE.
 2. TACTILE SURFACE TO ENSURE EDGES AND CORNERS DO NOT LIFT.



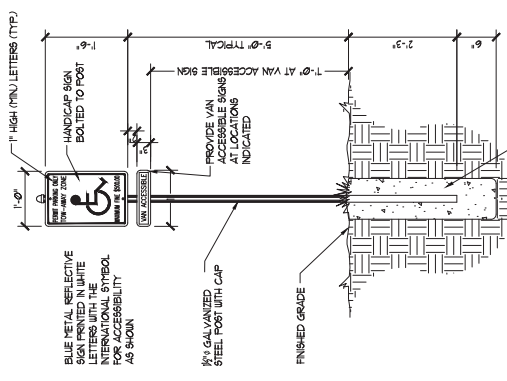
TREE BARRIER

NO SCALE



TREE PROTECTION DETAILS

NO SCALE



SIGN DETAIL

NO SCALE

SITE DETAILS
 C3.1
 SCALE AS NOTED SHEET REV #

McCarthy and Associates
 A DIVISION OF PERKINS ASSOCIATES, INC.
 1705 South Orange Avenue, Suite 100
 Orlando, Florida 32801
 (407) 841-7200
 W. Bruce Rosenblatt, P.E.
 McCarthy Project No. LEON111003



NEW COUNTY WORK BUILDING
 1, LEE VAUSE PARK, LEON COUNTY, FLORIDA
 LEON COUNTY PUBLIC WORKS DEPARTMENT
 2280 Miccosukee Road, Tallahassee, Florida 32308

NO.	DATE	REVISIONS

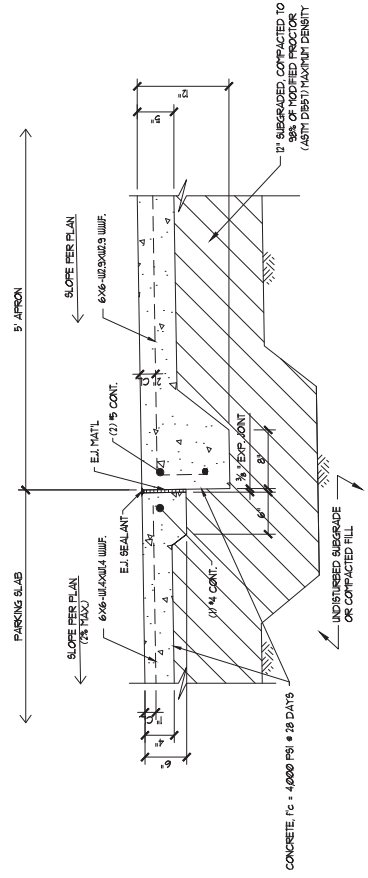
PROJECT: LEON COUNTY
 DRAWING TITLE: PAVEMENT
 DRAWING DATE: JULY 10, 2018
 BUILDING: FLOOR AREA

PAVEMENT DETAILS

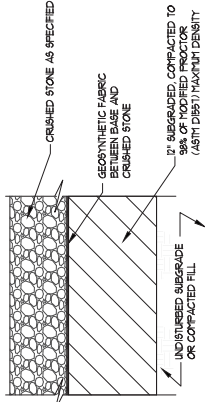
C3.2

SCALE	SHEET	REV	###
AS NOTED	CP		

This item has been electronically signed and sealed by W. Bruce Rosenblatt, P.E. License No. 31391. The seal number and date of this document are not considered part of the original document and must be verified on any electronic copies.

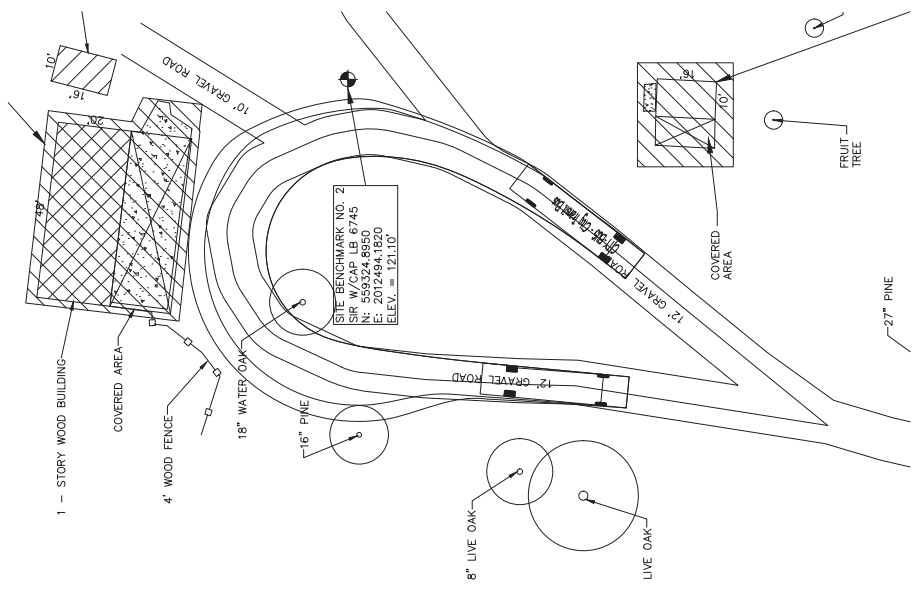


PARKING/APRON SECTION
 NO SCALE



GRAVEL SURFACE SECTION
 NO SCALE

- GRADE/ GRAVEL ROUSERS CONSTRUCTION NOTES:
1. THE GRAVEL ROUSERS SURFACE TO BE PLACED AND ELEVATIONS INDICATED AND COMPACT TO 98% OF MODIFIED PROCTOR (ASTM D957) TO A DEPTH OF 12" BELOW SUBGRADE SURFACE.
 2. PLACE APPROVED GRAVEL ROUSERS SURFACE MATERIAL (3/4" TO 1 1/2" CRUSHED STONE) WITHIN THE AREA INDICATED.
 3. GRADE GRAVEL SURFACE TO CONTOURS AND ELEVATIONS INDICATED.
 4. COMPACT WITH A HEAVY ROLLER TO OBTAIN A GRAVEL/COMPACTED SURFACE WITH A COMPACTED THICKNESS OF 3".



- AUTOTURN GRAPHIC**
 NO SCALE
- NOTES:
1. AUTOTURN GRAPHIC PROVIDED BY LEON COUNTY PUBLIC WORKS DEPARTMENT, ENGINEERING SERVICES DIVISION.
 2. GRAPHIC BASED ON CITY TRANSIT BUS.
 3. THE LOCATIONS WHERE THE VEHICLES ARE SHOWN TRACKING OFF THE SIDE OF THE GRAVEL ROADWAY ARE RELATIVELY FLAT, STABILIZED GRASS AREAS WHERE VEHICLES HAVE HISTORICALLY PARKED AND DRIVEN.

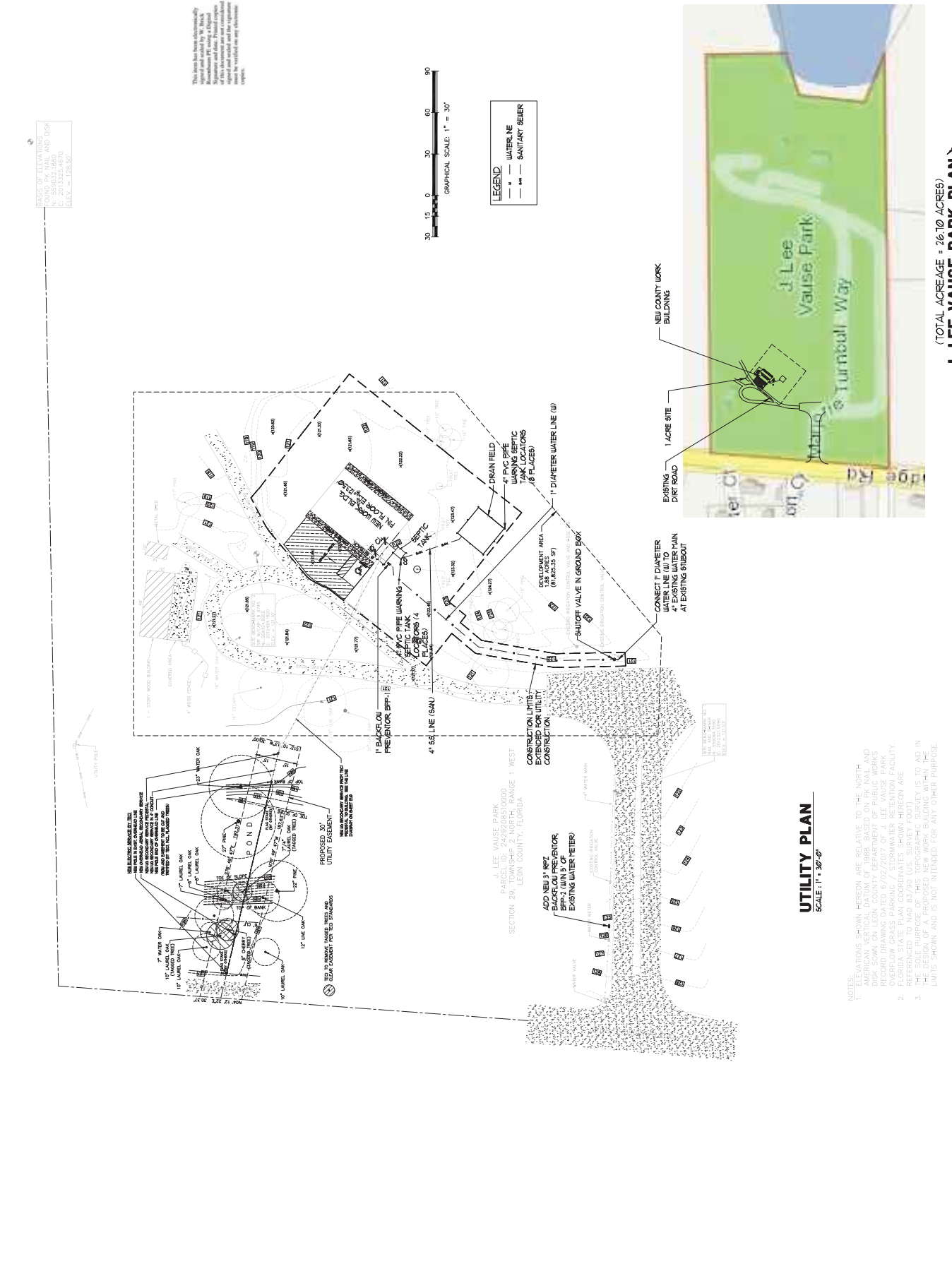


NO.	DATE	REVISIONS

PROJECT	LEON18003
DRAWN BY	J. LEE VAUSE
CHECKED BY	J. LEE VAUSE
DATE	10/20/17
APPROVED BY	J. LEE VAUSE

BUILDING	FLOOR	AREA

UTILITY PLAN	
SCALE	AS NOTED
REVISION #	U1.0



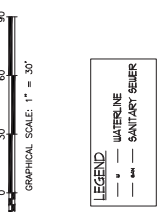
NOTES:
 1. ELEVATIONS SHOWN HEREON ARE RELATIVE TO THE NORTH AMERICAN VERTICAL DATUM OF 1988, BASED ON BK MAIL AND DISK SHOWN ON LEON COUNTY DEPARTMENT OF PUBLIC WORKS RECORD DRAWING DATED 6/02/2017 OF J. LEE VAUSE PARK. THE ELEVATIONS ON THIS DRAWING ARE THE SAME AS SHOWN ON THE FLORIDA STATE PLAN COORDINATES SHOWN HEREON ARE REFERENCED TO NAD 83/90 (U.S. SURVEY FOOT).
 2. THE SOLE PURPOSE OF THIS TOPOGRAPHIC SURVEY IS TO AID IN THE LOCATION AND DEPTH OF EXISTING UTILITIES AND TO ESTABLISH LIMITS. SHOWN AND IS NOT INTENDED FOR ANY OTHER PURPOSE.

UTILITY PLAN
 SCALE 1" = 30'-0"

(TOTAL ACREAGE = 26.10 ACRES)
J. LEE VAUSE PARK PLAN

BASES OF ELEVATIONS
 SURFACE
 NAD 83/90 (U.S. SURVEY FOOT)
 E: 2013.325 46.70
 N: 128.50

This plan has been prepared by the undersigned Professional Engineer, W. Patrick Wainwright, P.E., License No. 33787, State of Florida, in accordance with the provisions of the Florida Statutes, Chapter 482, F.S., and the Florida Board of Professional Engineers, Rules and Regulations, Chapter 60B, F.A.C., and the Florida Board of Professional Surveyors, Rules and Regulations, Chapter 60C, F.A.C.



PLANTING NOTES

- A. LANDSCAPE INSTALLER SHALL VERIFY LOCATION OF ALL POSSIBLE LANDSCAPING CONFLICTS (UNDERGROUND UTILITIES, STORM SEWERS, FILTER SYSTEMS, ETC.) BEFORE COMMENCEMENT OF ANY PLANTING INSTALLATION.
- B. ALL PLANTS SHALL BE GRADED AS FLORIDA NO. 1 OR BETTER AS DESCRIBED IN THE LANDSCAPE SCHEDULE. PLANTS SHALL BE PLANTED SO THAT THE MOST PLEASING SIDE IS MOST VISIBLE.
- C. ALL WORK PERFORMED SHALL MEET OR EXCEED THE ENVIRONMENTAL MANAGEMENT ORDINANCE AND THE STANDARDS OF GOOD NURSERY PRACTICE.
- D. MULCH TO A MINIMUM OF 3" COMPACTED THICKNESS WITH PINE STRAW, PINE BARK OR APPROVED EQUAL. SEE PLANTING DETAILS.
- E. LANDSCAPE INSTALLER SHALL VERIFY ALL QUANTITIES IN THE PLANT SCHEDULE AND SHALL FILL ALL PLANTING BEDS AT SPACING SPECIFIED.
- F. LANDSCAPE INSTALLER SHALL GUARANTEE ALL PLANTS FOR ONE YEAR AFTER ONE YEAR'S TIME. THE OWNER WILL MAINTAIN THE LANDSCAPING AND TREES IN PERPETUITY.
- G. NO SUBSTITUTIONS OR CHANGES SHALL BE MADE TO THE DESIGN WITHOUT APPROVAL FROM THE LANDSCAPE ARCHITECT. THE LANDSCAPE ARCHITECTOR MAY REQUIRE MAJOR CHANGES WILL REQUIRE A REVISION TO THE ENVIRONMENTAL MANAGEMENT PERMIT.
- H. THE PLANTING VOLUME FOR ONE OR MORE TREES SHALL BE A MINIMUM OF 1200 CUBIC FEET WITH A MINIMUM WIDTH OF 12 FEET AND DEPTH OF 3 FEET. CONSTRUCTION GRADE FILL MATERIAL WITHIN PLANTING AREAS SHALL BE EXCAVATED TO A DEPTH OF THREE FEET BELOW THE FINISHED GRADE OF THE PLANTING AREA AND REPLACED WITH A NONCOMPACTED "FRIABLE" TOPSOIL. NUIGRASS INFESTED SOIL IS NOT ACCEPTABLE AND MAY NOT BE USED IN ANY MANNER.
- I. WHERE UNDERGROUND UTILITIES CONFLICT WITH PROPOSED PLANTINGS, TREE PLACEMENT SHALL BE A MINIMUM OF TEN FEET FROM THE UNDERGROUND UTILITY OR A ROOT BARRIER OF TWO FEET DEEP SHALL BE INSTALLED USING NOS EP SERIES ROOT BARRIER ON EQUIVALENT.
- J. SHRUBS SHALL NOT BE PLANTED CLOSER THAN 3 FEET FROM THE EDGE OF ANY IMPERVIOUS AREA.

WATERING REQUIREMENTS:

WATER FOR PLANT ESTABLISHMENT - WATER ALL PLANTS EVERY DAY FOR TWO WEEKS, EVERY OTHER DAY FOR TWO WEEKS, AND TWICE WEEKLY FOR TWO MONTHS, AT A RATE OF 1" PER APPLICATION. WATERING MAY BE SKIPPED WHEN LOCAL RAIN CONDITIONS EQUAL THE ABOVE RATES. AFTER THE INITIAL 90 DAY ESTABLISHMENT PERIOD, PLANTS SHOULD ONLY BE WATERED WHEN LOCAL RAIN CONDITIONS ARE LESS THAN 1" PER WEEK FOR AN EXTENDED PERIOD.

FERTILIZATION REQUIREMENTS:

FERTILIZE ALL PLANTS AT TIME OF INSTALLATION WITH A BALANCED, COMPLETE FERTILIZER OF NEUTRAL CHARACTER WITH AN 18-6-12 FORMULATION, AT THE MANUFACTURERS RECOMMENDED RATE OF APPLICATION. NO OTHER FERTILIZATION IS REQUIRED, BUT MAY BE CONTINUED AS ABOVE, WITH ANNUAL APPLICATIONS IN MARCH OF EACH YEAR.

NOTE: PLANT SPECIES HAVE BEEN SELECTED WHICH ARE CAPABLE OF THRIVING IN THE LOCAL ENVIRONMENT WITHOUT CONTINUOUS IRRIGATION AND FERTILIZATION. AFTER THE INITIAL 90 DAY ESTABLISHMENT PERIOD, WATERING AND FERTILIZING SHOULD ONLY OCCUR WHEN LOCAL CONDITIONS DETERIORATE TO THE POINT THAT NATIVE/NATURALIZED PLANTS WILL NOT THRIVE.

This form has been electronically signed and sealed by the State Registrar and State Public Health Inspector. The seal and signature must be verified on any electronic copies.

McCarthy and Associates
 A DIVISION OF PRINCE ASSOCIATES, INC.
 1795 South Orange Avenue, Suite 200
 (305) 971-7200
 W. Bank Robinson, P.E.
 10000 W. Bank Robinson, P.E.
 McCarthy Project No. 1501110003



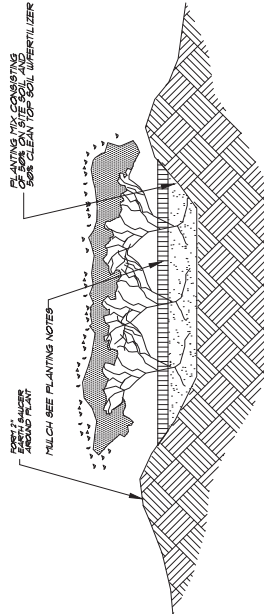
NEW COUNTY WORK BUILDING
 1, LEE VAUSE PARK, LEON COUNTY, FLORIDA
 LEON COUNTY PUBLIC WORKS DEPARTMENT
 2280 Miccosukee Road, Tallahassee, Florida 32308

NO.	DATE	REVISIONS

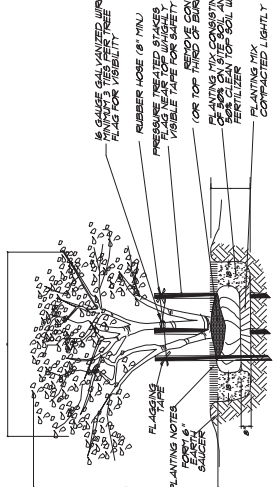
PROJECT: LEON18001
 DRAWN BY: DATE: APPROVED: DATE: 09/10/2018
 BUILDING: FLOOR: REVISIONS:
 LANDSCAPING DETAILS

SCALE	SHEET	OF	REV	DATE
AS NOTED				

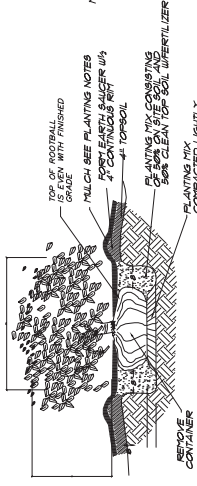
L3.1



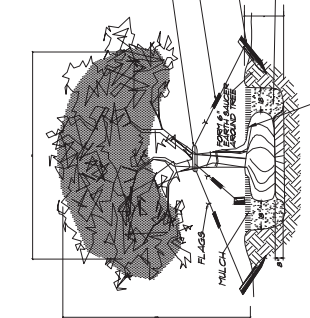
GROUND COVER PLANTING DETAIL
 NOT TO SCALE



MULTI-TRUNK TREE PLANTING DETAIL
 NOT TO SCALE



SHRUB PLANTING DETAIL
 NOT TO SCALE



TREE PLANTING DETAIL
 NOT TO SCALE

McCarthy and Associates
 A DIVISION OF PENNEX ASSOCIATES, INC.
 1103 South Gadsden Avenue, Suite 100
 Tallahassee, FL 32304
 (904) 874-7230
 W. Blake Robertson, P.E.
 W. Blake Robertson, P.E.
 MC-0101 Project No. LEON18033

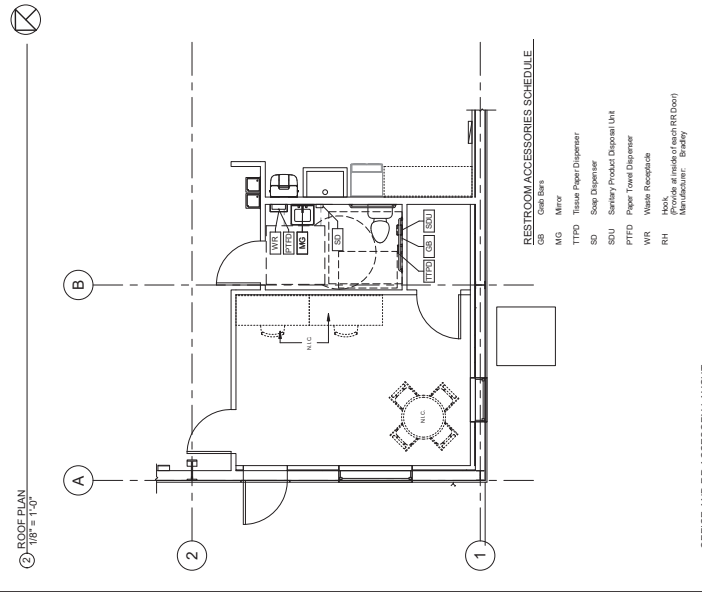
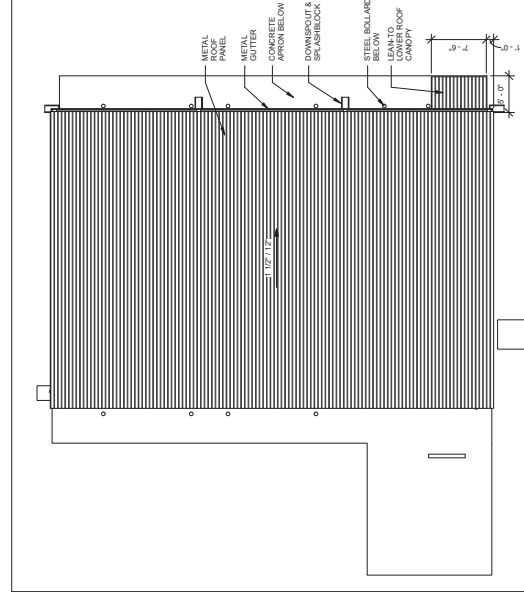
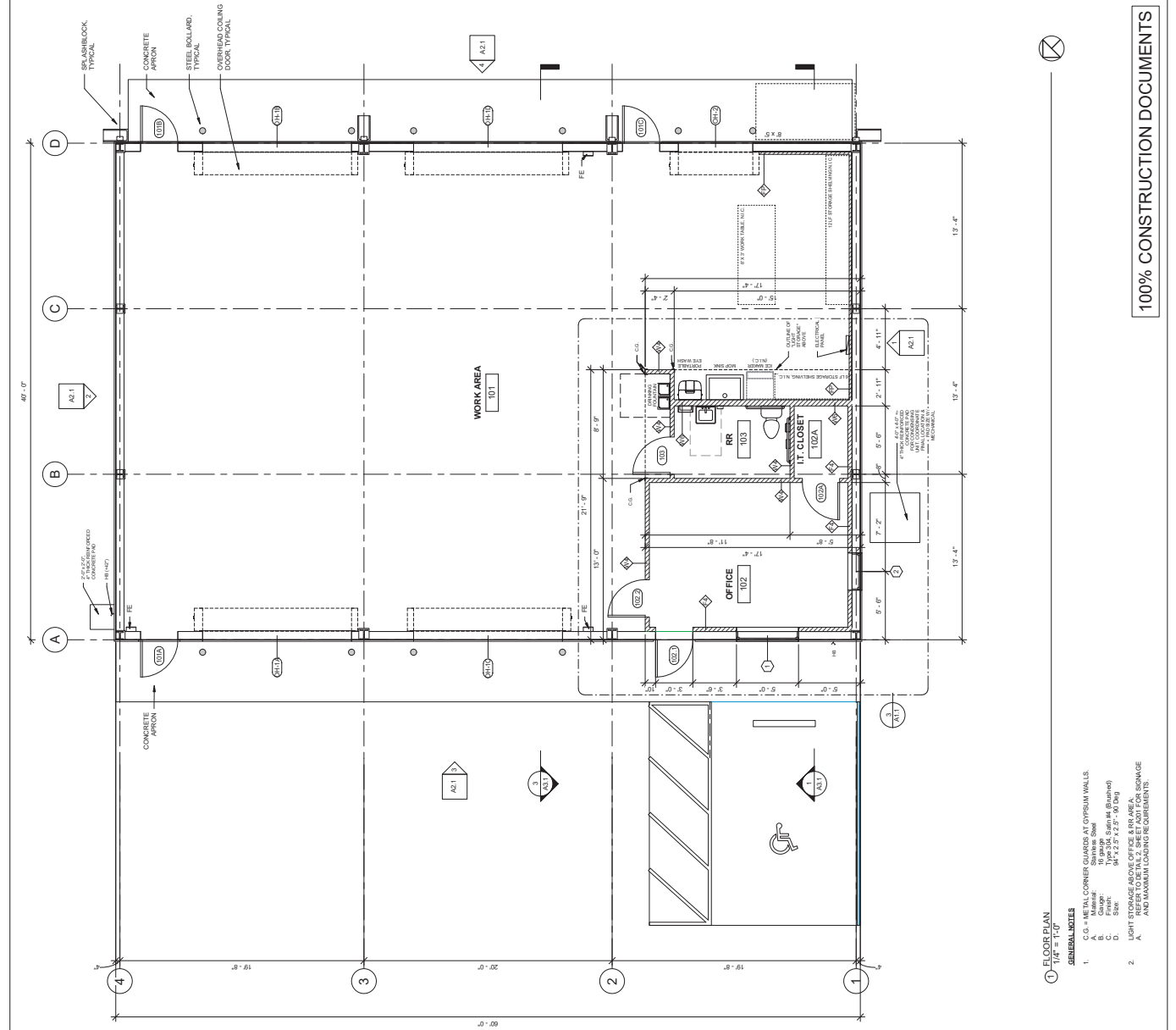
workshop
 Christopher A. Robinson
 F.L. 1832508
 P.L. 182001261

NEW COUNTY WORK BUILDING
 J. LEE VAUSE PARK, LEON COUNTY, FLORIDA
 LEON COUNTY PUBLIC WORKS DEPARTMENT
 2280 Miccosukee Road, Tallahassee, Florida

DATE	NO.	REVISIONS

ALL WORK SHALL BE IN ACCORDANCE WITH THE 2018 FLORIDA BUILDING CODE, AS AMENDED BY ALL APPLICABLE ORDINANCES AND RULES OF THE BOARD OF REGULATION AND DISCIPLINE OF THE STATE BOARD OF PROFESSIONAL ENGINEERING EXAMINERS. THE CONTRACTOR SHALL BE RESPONSIBLE FOR OBTAINING ALL NECESSARY PERMITS AND INSURANCE COVERAGE. THE CONTRACTOR SHALL BE RESPONSIBLE FOR OBTAINING ALL NECESSARY PERMITS AND INSURANCE COVERAGE. THE CONTRACTOR SHALL BE RESPONSIBLE FOR OBTAINING ALL NECESSARY PERMITS AND INSURANCE COVERAGE.

PROJECT: LEON18033
 DRAWING DATE: 07/15/2018
 BUILDING FLOOR: FLOOR
 SCALE: AS NOTED
 SHEET: 11 OF 11
 REV: **A.1.1**



- 1 FLOOR PLAN**
 $1/4" = 1'-0"$
 - 2 ROOF PLAN**
 $1/8" = 1'-0"$
 - 3 OFFICE AND RR ACCESSORY LAYOUT**
 $1/4" = 1'-0"$
- RESTROOM ACCESSORIES SCHEDULE**
- CG Metal Corner Guard
 - MG Mirror
 - TTPD Tissue Paper Dispenser
 - SD Soap Dispenser
 - SDU Sanitary Product Dispenser Unit
 - PTD Paper Towel Dispenser
 - WR Waste Receptacle
 - RH Hand Hygiene Dispenser
- GENERAL NOTES**
- C.G. = METAL CORNER GUARDS AT GYPSUM WALLS
 Material: Stainless Steel
 Finish: Type 304, Satin (brushed)
 - UPPOINT STORAGE BASKETS FOR OFFICE USE:
 REFER TO BULKY SHEET AND FOR STORAGE
 AND MAXIMUM LOADING REQUIREMENTS.

100% CONSTRUCTION DOCUMENTS

NEW COUNTY WORK BUILDING
J LEE VAUSE PARK, LEON COUNTY, FLORIDA

CONTRACT DOCUMENTS
LEON COUNTY PUBLIC WORKS DEPARTMENT
2280 Miccosukee Road, Tallahassee, Florida

PROJECT LEON1003

DATE 07/10/2018

BY []

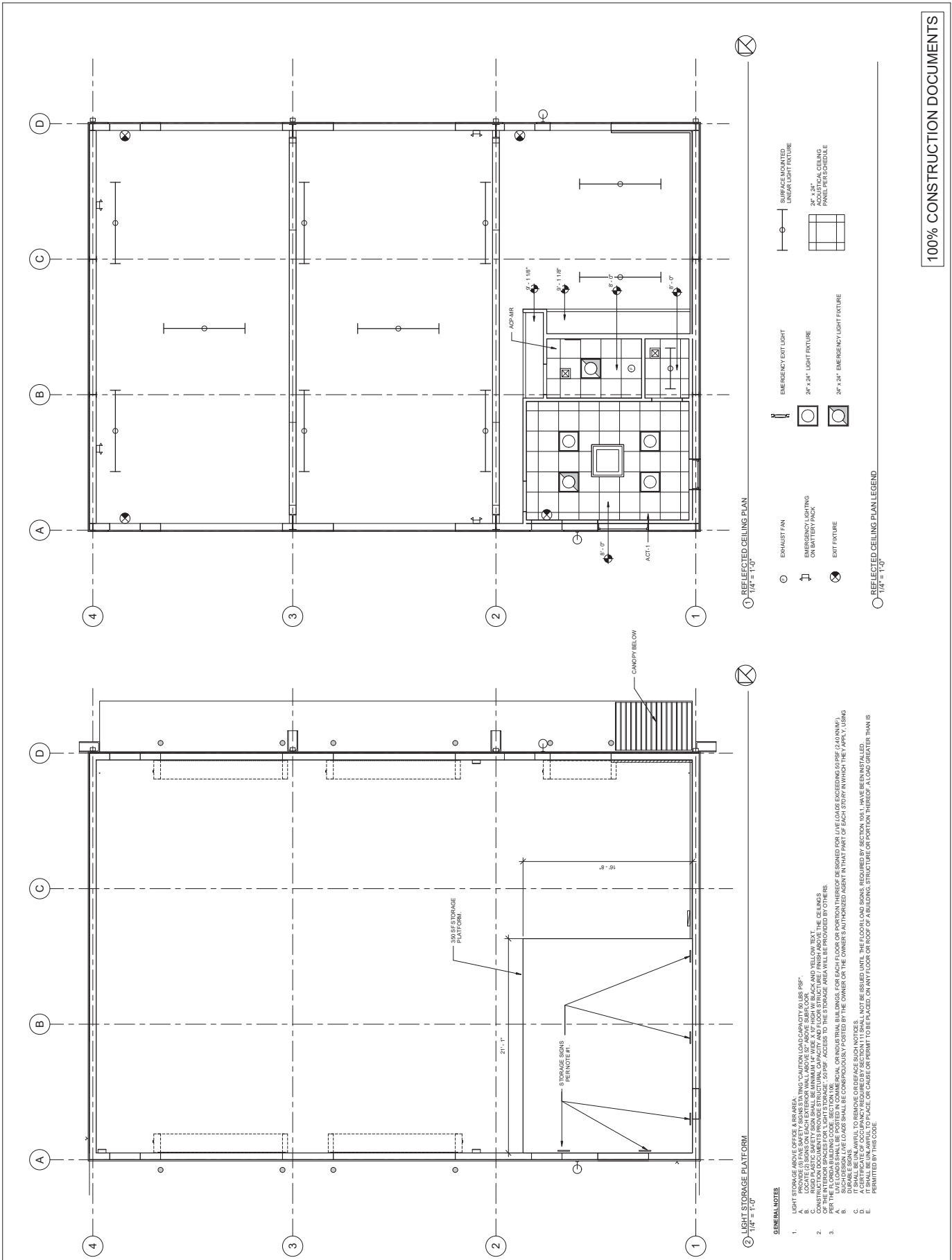
McCarthy and Associates
A DIVISION OF PERION ASSOCIATES, INC.
1102 South Gateway, Tallahassee, FL 32304
(904) 974-7430
W. Brock Robinson, P.E.
McCarthy Project No. LEON18003

workshop
Christopher A. Robinson
FL ARS0508
P.L. 000002801
FL 000001000

REFLECTED CEILING PLAN
1/4" = 1'-0"

REFLECTED CEILING AND LIGHT STORAGE PLANS
A1.2

SCALE AS NOTED SHEET OF REV



100% CONSTRUCTION DOCUMENTS

- GENERAL NOTES**
- LIGHT STORAGE ABOVE OFFICE & RR AREA.
 - LOCATE LIGHT STORAGE BIN ON EACH EXTERIOR WALL ABOVE SUBFLOOR.
 - LOCATE LIGHT STORAGE BIN ON EACH EXTERIOR WALL ABOVE SUBFLOOR.
 - LOCATE LIGHT STORAGE BIN ON EACH EXTERIOR WALL ABOVE SUBFLOOR.
 - CONST. PLASTIC SAFETY FLOOR SHALL BE MINIMUM 1/4" THICK FLOOR WITH BEACH AND YELLOW TEXT OF THE INTERIOR SPACES FOR LIGHT STORAGE. 50 PSF ACCESS TO THE STORAGE AREA WILL BE PROVIDED BY OTHERS.
 - LIVE LOADS SHALL BE POSTED IN COMMERCIAL OR INDUSTRIAL BUILDINGS FOR EACH FLOOR OR PORTION THEREOF DESIGNED FOR LIVE LOADS EXCEEDING 50 PSF (2.40 KN/M²).
 - DRAWABLE LOADS SHALL BE CONSIDERED BY THE OWNER OR THE OWNER'S AUTHORIZED AGENT IN THAT PART OF EACH STORY WITHIN THE APPL. V. USING A CERTIFICATE OF OCCUPANCY REQUIRED BY SECTION 11 SHALL NOT BE ISSUED UNTIL THE FLOOR LOADS, REQUIRED BY SECTION 106.1, HAVE BEEN INSTALLED.
 - IT SHALL BE UNLAWFUL TO PLACE OR CARRY OR PERMIT TO BE PLACED, ON ANY FLOOR OR ROOF OF A BUILDING, STRUCTURE OR PORTION THEREOF, A LOAD GREATER THAN IS PERMITTED BY THIS CODE.

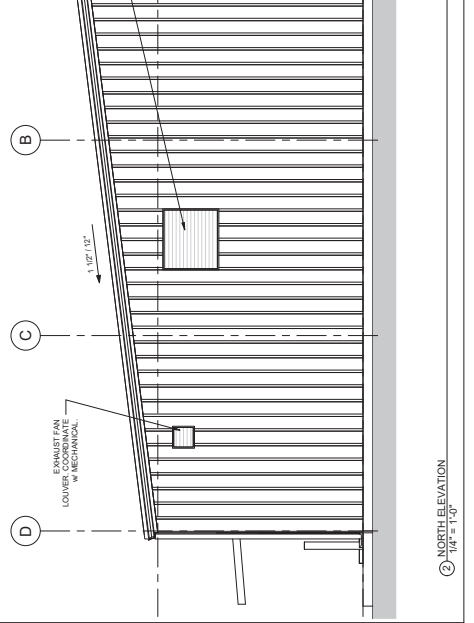
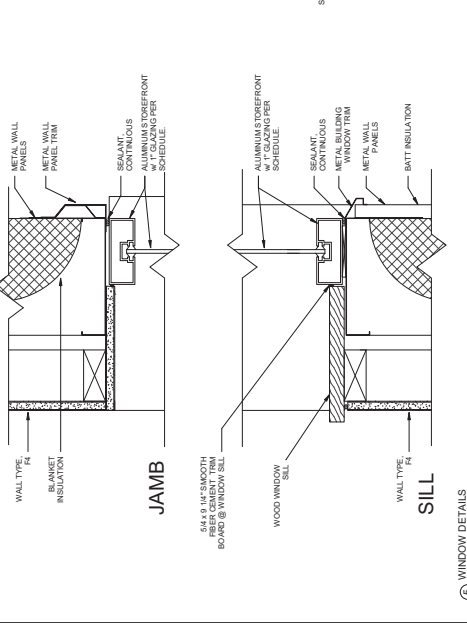
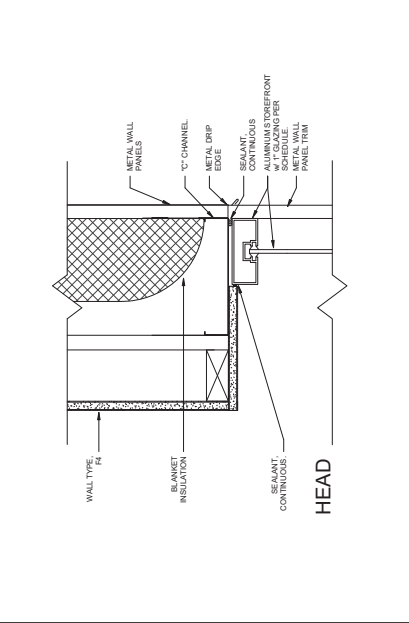
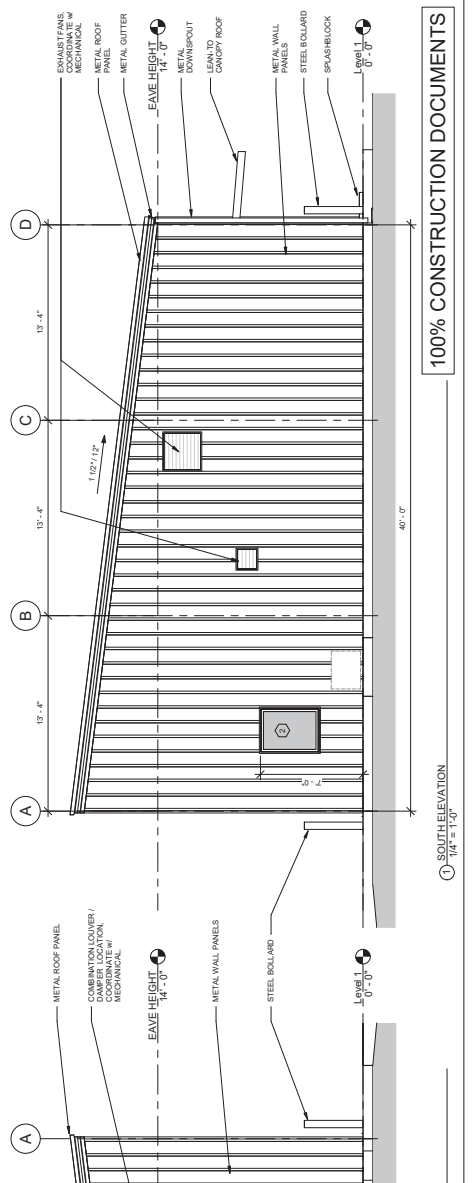
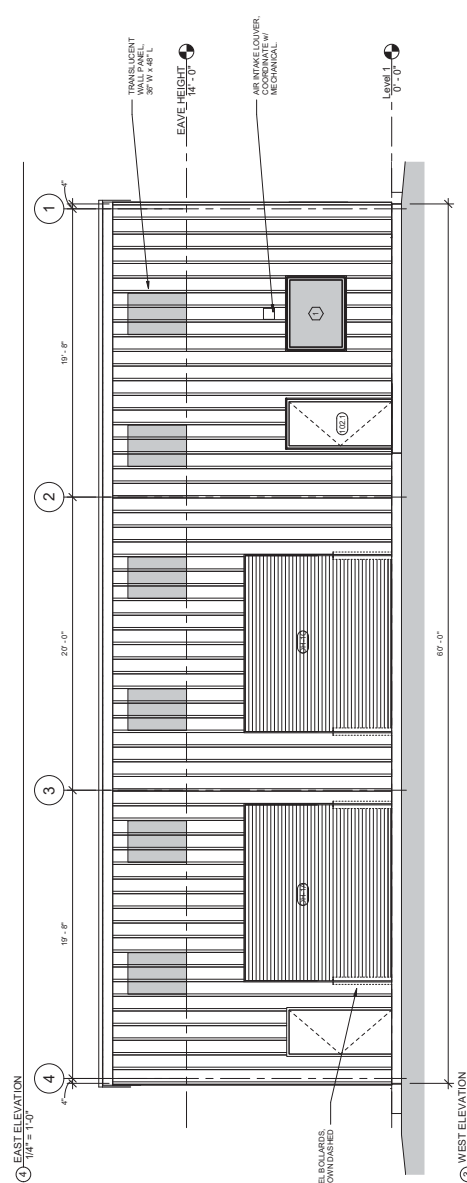
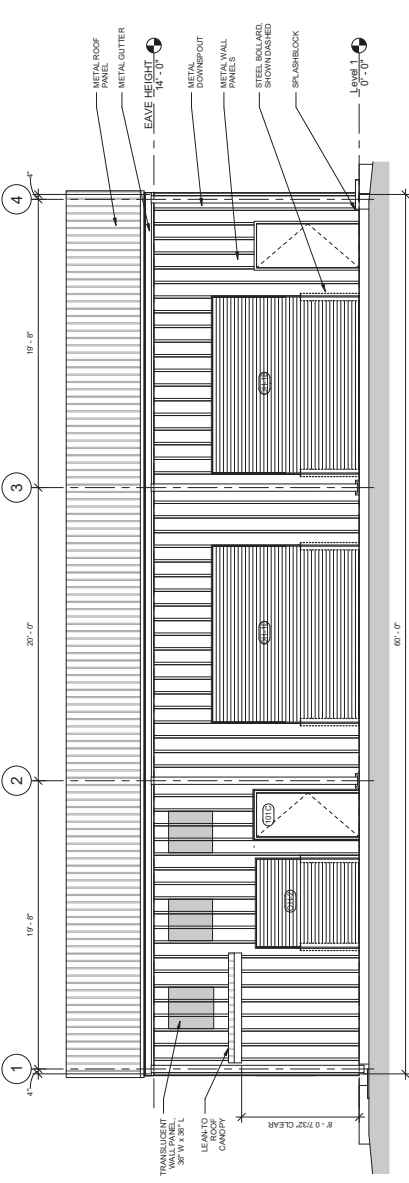
- REFLECTED CEILING PLAN LEGEND**
1/4" = 1'-0"
- EMERGENCY EXIT LIGHT
 - ⊕ EXHAUST FAN
 - ⊕ EMERGENCY LIGHTING ON BATTERY PACK
 - ⊕ EMERGENCY EXIT LIGHT
 - ⊕ SURFACE MOUNTED LINEAR LIGHT FIXTURE
 - ⊕ 2'x2' 24" EMERGENCY LIGHT FIXTURE
 - ⊕ 2'x2' 24" EMERGENCY LIGHT FIXTURE

McCarthy and Associates
A DIVISION OF PERINI ASSOCIATES, INC.
100 South Gadsden Street, Suite 100
Tallahassee, Florida 32301
(904) 671-7130
W. Brock Robinson, P.E.
McCarthy Project No. LE0118003

workshop
Christina A. Robinson, P.E.
2280 Miccosukee Road, Tallahassee, Florida
32301
(904) 671-7130

NEW COUNTY WORK BUILDING
J LEE VAUSE PARK, LEON COUNTY, FLORIDA
CONTRACT DOCUMENTS
LEON COUNTY PUBLIC WORKS DEPARTMENT
2280 Miccosukee Road, Tallahassee, Florida

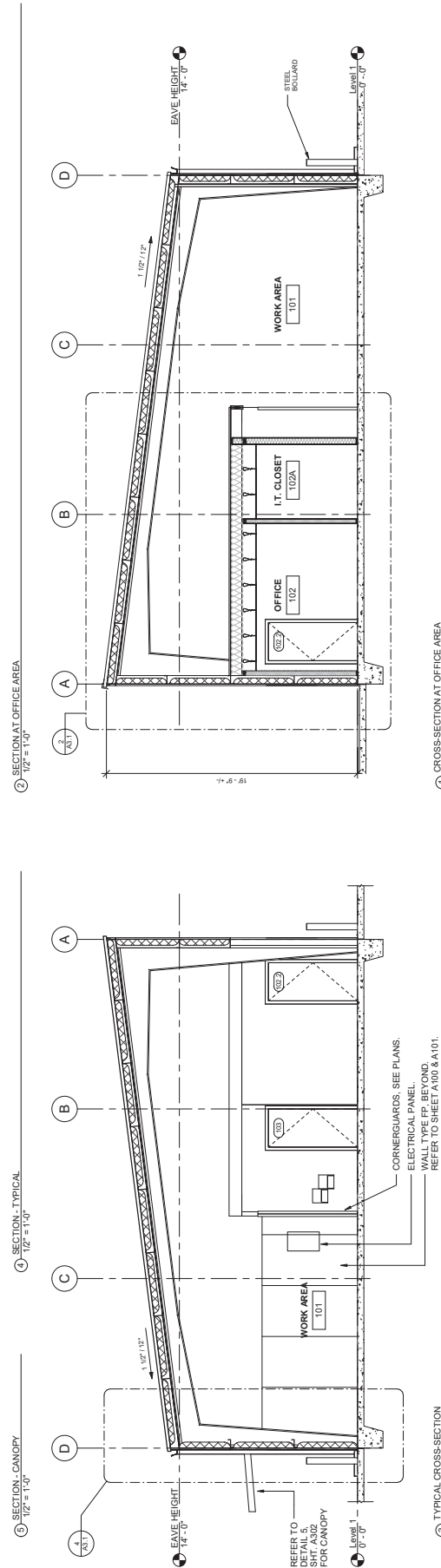
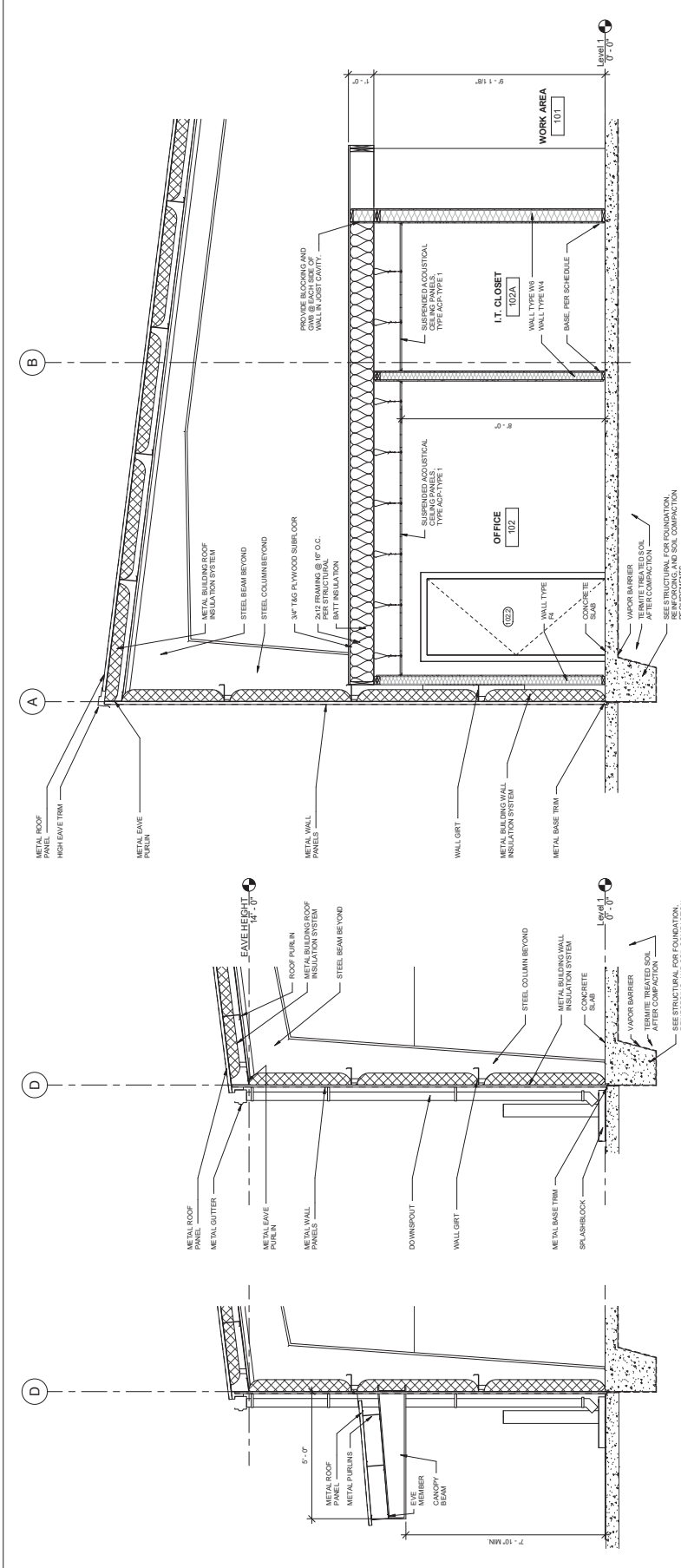
PROJECT	DATE	NO.	REVISIONS



WINDOW DETAILS 3" = 1'-0"
100% CONSTRUCTION DOCUMENTS
 SHEET **A2.1** OF
 SCALE AS NOTED
 ELEVATIONS
 ① NORTH ELEVATION 1/4" = 1'-0"
 ② SOUTH ELEVATION 1/4" = 1'-0"

REVISIONS	DATE	NO.	BY

PROJECT	LEONT 18003
DRAWING DATE	01/10/2018
BUILDING FLOOR	FLOOR
AREA	
BUILDING SECTIONS	
SCALE	AS NOTED
SHEET	OF
A3.1	



100% CONSTRUCTION DOCUMENTS

McCarthy and Associates
 A DIVISION OF PERINI ASSOCIATES, INC.
 1102 South Greenway, Suite 200
 Ft. Lauderdale, FL 33304
 (954) 574-7300
 W. Bruce Robertson, P.E.,
 Project Engineer
 McCarthy Project No. 1504118003

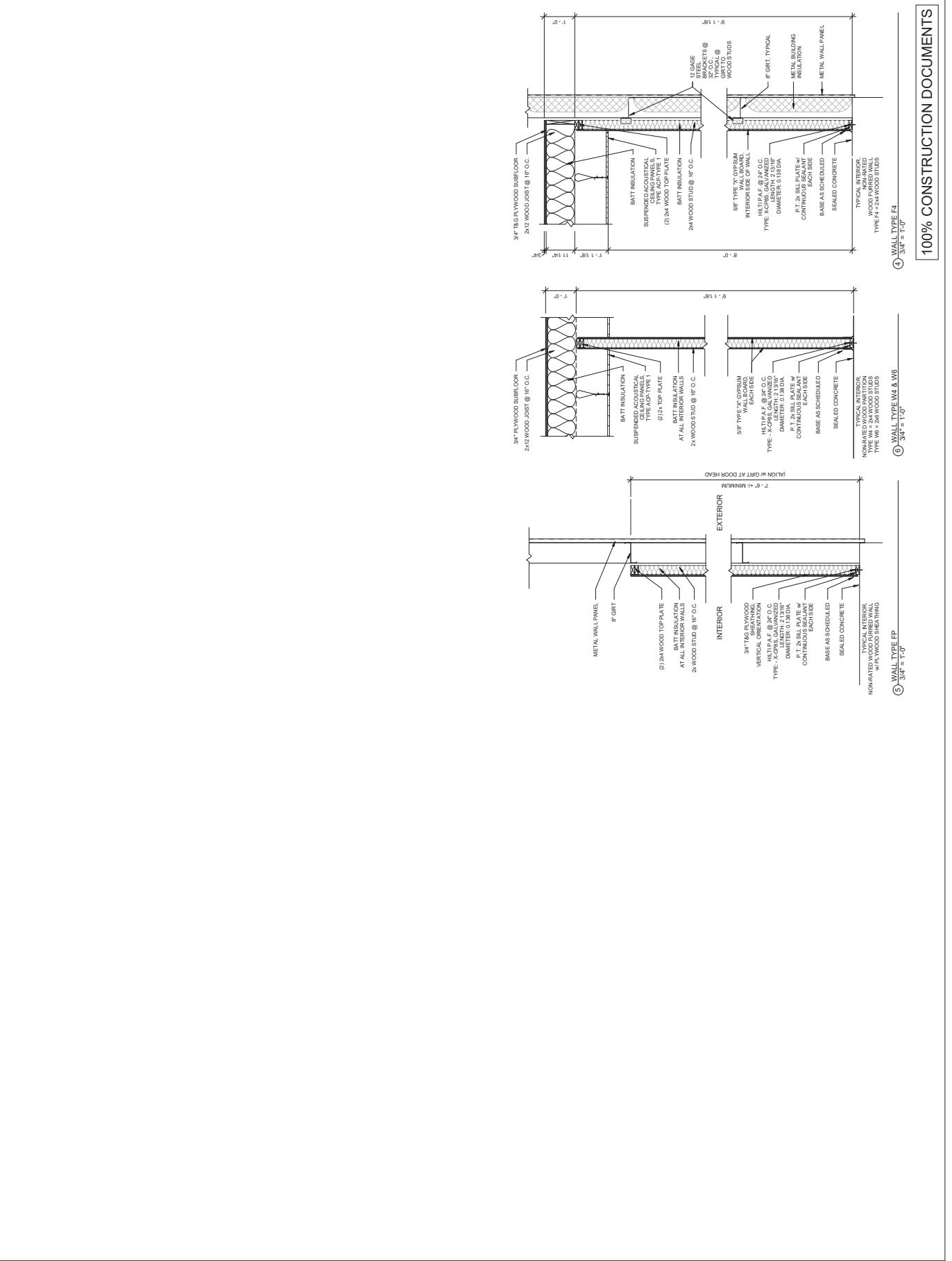
workshop
 Christopher A. Robinson
 E. ARCHITECT
 P.O. Box 27851
 Ft. Lauderdale, FL 33301-0281

NEW COUNTY WORK BUILDING
 J LEE VAUSE PARK, LEON COUNTY, FLORIDA

CONTRACT DOCUMENTS

LEON COUNTY PUBLIC WORKS DEPARTMENT
 2280 Miccosukee Road, Tallahassee, Florida

PROJECT	LEON01003
ISSUED FOR	PERMITS
DATE	06/01/2016
NO.	01
DATE	
NO.	
DATE	
NO.	
DATE	
NO.	
DATE	
NO.	
DATE	
NO.	



100% CONSTRUCTION DOCUMENTS

4 WALL TYPE F4
3/4" = 1'-0"

5 WALL TYPE W4 & W6
3/4" = 1'-0"

6 WALL TYPE FP
3/4" = 1'-0"

PARTITION TYPES

SCALE AS NOTED	SHEET	REV
A3.2		

McCarthy and Associates
 A Division of Farnsworth Associates, Inc.
 1700 North Central Expressway, Suite 200
 Tallahassee, Florida 32301
 Phone: 904.204.3333
 Fax: 904.204.3334
 Website: www.mcaassoc.com
 Project No. 1200110003

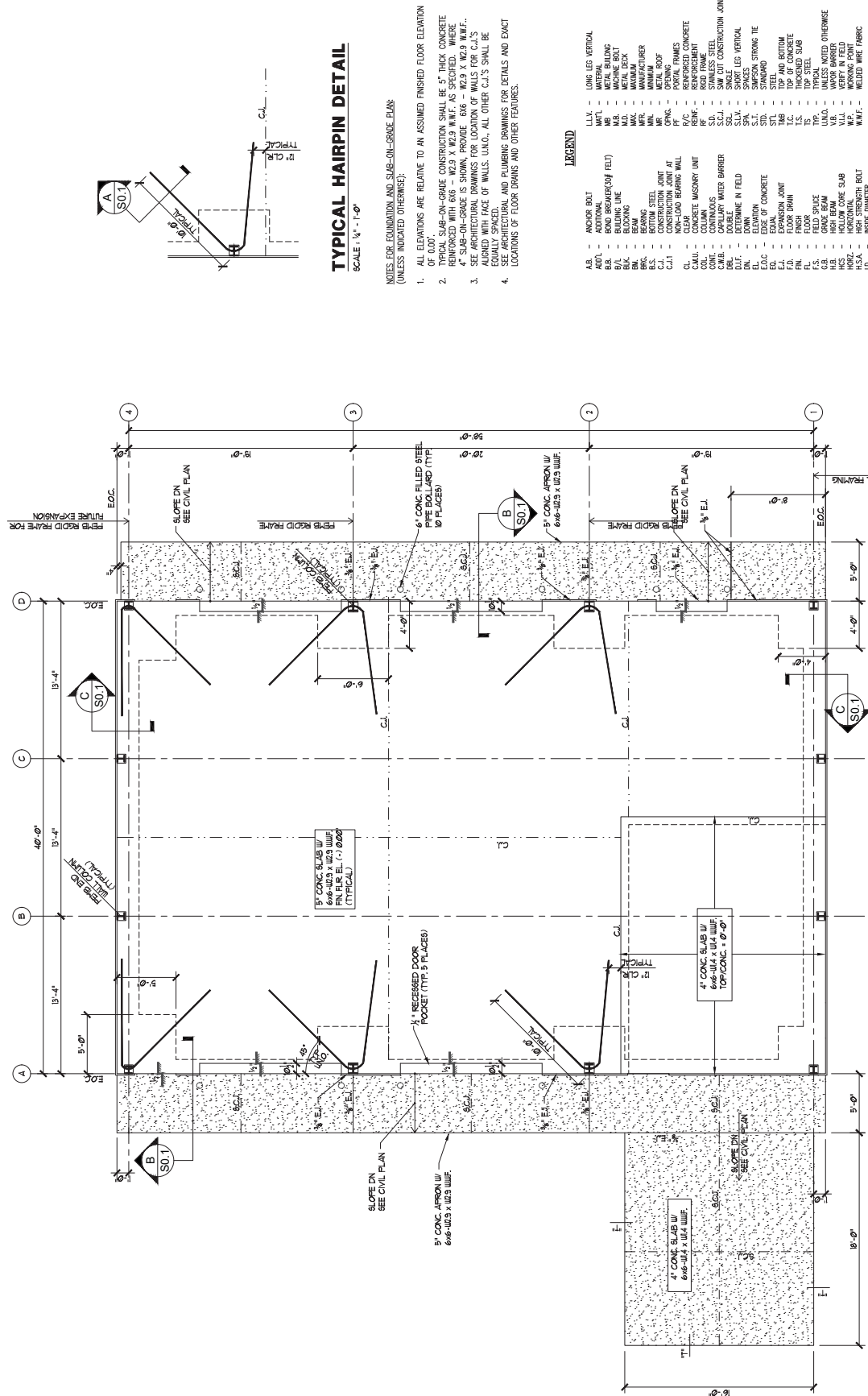


NEW COUNTY WORK BUILDING

J. LEE VAUSE PARK, LEON COUNTY, FLORIDA
 2280 McCoskuee Road, Tallahassee, Florida 32308
 LEON COUNTY PUBLIC WORKS DEPARTMENT

NO.	DATE	REVISIONS

This item has been electronically
 signed and sealed by the
 registered professional engineer,
 Robert J. Lee, No. 11394,
 State of Florida. Printed copies
 signed and sealed and the registration
 must be verified on any electronic
 copies.



TYPICAL HAIRPIN DETAIL

SCALE: 1/4" = 1'-0"

- NOTES FOR FOUNDATION AND SLAB-ON-GRADE PLAN
 (UNLESS INDICATED OTHERWISE):
- ALL ELEVATIONS ARE RELATIVE TO AN ASSUMED FINISHED FLOOR ELEVATION OF 0.00'.
 - TYPICAL SLAB-ON-GRADE CONSTRUCTION SHALL BE 5" THICK CONCRETE REINFORCED WITH 6#6 - W/2.9 X W/2.9 W/IF. AS SPECIFIED. WHERE 4" SLAB-ON-GRADE IS SHOWN, PROVIDE 6#6 - W/2.9 X W/2.9 W/IF..
 - SEE ARCHITECTURAL DRAWINGS FOR LOCATION OF WALLS FOR C.I.S. WALLS TO BE 8" THICK, UNLESS OTHERWISE SPECIFIED.
 - SEE ARCHITECTURAL AND PLUMBING DRAWINGS FOR DETAILS AND EXACT LOCATIONS OF FLOOR DRAINS AND OTHER FEATURES.

LEGEND

A.B.	- ANCHOR BOLT	L.L.V.	- LONG LEG VERTICAL
A.D.T.	- ADDITIONAL	M.T.	- METAL
B.B.	- BOND BREAKER (W/ FELT)	M.B.	- METAL BUILDING
B.L.	- BUILDING LINE	M.C.	- METAL CEILING
B.M.	- BRASS	M.D.	- METAL DECK
B.R.	- BRASS	M.W.	- METAL WINDOW
B.S.	- BRASS	M.W.M.	- METAL WINDOW
C.I.	- CONSTRUCTION JOINT AT CLEAR	M.R.	- METAL ROOF
C.I.1	- CONSTRUCTION JOINT AT CLEAR	M.R.F.	- METAL ROOF
C.M.U.	- CONCRETE MASONRY UNIT	R/C	- REINFORCED CONCRETE
C.W.B.	- CAPILLARY WATER BARRIER	R.F.	- REINFORCED FLOOR
C.W.B.	- CAPILLARY WATER BARRIER	R.F.P.	- REINFORCED FLOOR
D.L.F.	- DETERMINE IN FIELD	S.C.	- SAW CUT CONSTRUCTION JOINT
D.N.	- DOWN	S.C.1	- SAW CUT CONSTRUCTION JOINT
E.O.A.	- EDGE OF CONCRETE	S.L.V.	- SHORT LEG VERTICAL
E.L.	- ELEVATION	S.S.	- STAINLESS STEEL
F.D.	- FLOOR DRAIN	S.S.P.	- STAINLESS STEEL
F.F.	- FLOOR FINISH	S.T.	- STANDARD
F.S.	- FIELD SPACE	S.T.B.	- STEEL AND BOTTOM
G.B.	- GRADE BEAM	T.C.	- TOP OF CONCRETE
H.C.	- HOLLOW CORE SLAB	T.P.	- TYPICAL
H.C.R.	- HOLLOW CORE ROOT	U.A.N.	- UNLESS NOTED OTHERWISE
I.D.	- INSIDE DIAMETER	V.F.	- VERTICAL
L.B.	- LOW BEAM	W.F.	- WELDED WIRE FABRIC
L.S.	- LONG	W.P.	- WORKING POINT



FOUNDATION AND SLAB ON GRADE PLAN
 SCALE: 1/4" = 1'-0"

S1.0

SCALE	TITLE	DATE	BY
AS NOTED	FOUNDATION AND SLAB-ON-GRADE PLAN	10.21.14	

McCarthy and Associates
 A Division of Farnsworth Associates, Inc.
 1700 South Orange Avenue, Suite 200
 Orange Park, Florida 32067
 Phone: 352-339-1100
 Fax: 352-339-1101
 W. Lee Vause, P.E.
 Florida License No. 12031
 McCarney Project No. 120010003

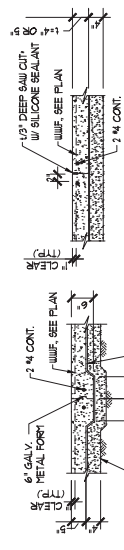


NEW COUNTY WORK BUILDING
 J. LEE VAUSE PARK, LEON COUNTY, FLORIDA
 LEON COUNTY PUBLIC WORKS DEPARTMENT
 2280 Miccosukee Road, Tallahassee, Florida 32308

DATE	NO.	REVISIONS

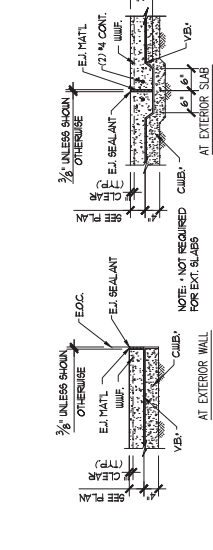
PROJECT	LEON COUNTY WORK BUILDING
DRAWN BY	DATE
CHECKED BY	DATE
APPROVED BY	DATE
BUILDING AREA	
FLOOR AREA	
SLAB ON-GRADE DETAILS	
SCALE	AS NOTED
REVISED	
DATE	
BY	

This item has been electronically signed and sealed by W. Lee Vause, P.E. License No. 12031, State of Florida. Printed copies of this document are not valid unless signed and sealed and the registration must be verified on any electronic copy.



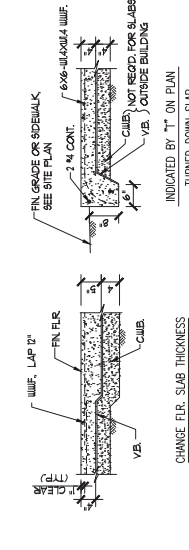
SAWCUT SHALL BE CUT AFTER THE INITIAL SET OF THE CONCRETE (AS SOON AS THE SAW OPERATOR FEELS THE CONCRETE HAS SET) BUT NOT MORE THAN 6 HOURS AFTER THE CONCRETE IS PLACED.

CONSTRUCTION JOINT DETAILS



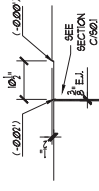
NOTE: NOT REQUIRED FOR EXT. SLABS INDICATED BY 3/8" E.L. ON PLAN

EXPANSION JOINTS

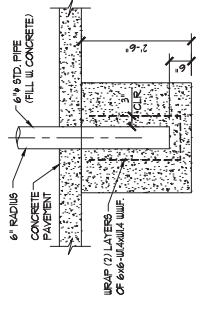


TYP. SLAB ON GRADE DETAILS

NO SCALE

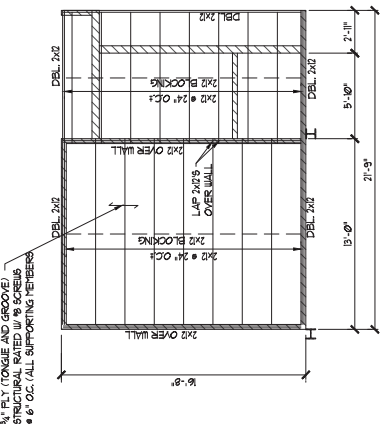


TYPICAL RECESS AT GARAGE DOOR



TYPICAL STEEL BOLLARD DETAIL

NO SCALE



MEZZANINE FRAMING PLAN

SCALE: 1/4" = 1'-0"

McCarty and Associates
 A DIVISION OF PERKINS ASSOCIATES, INC.
 1705 South Coquina Street, Suite 100
 Tallahassee, Florida 32301
 Phone: (904) 771-7323
 Fax: (904) 771-7323
 W. Lee Vause, P.E.
 Project No. 1320118003
 McCarty Project No. 120118003

McGinniss & Fleming
 ENGINEERING, INC.
 2280 MICCOSKEE ROAD, TALLAHASSEE, FLORIDA 32308
 2280 MICCOSKEE ROAD, TALLAHASSEE, FLORIDA 32308

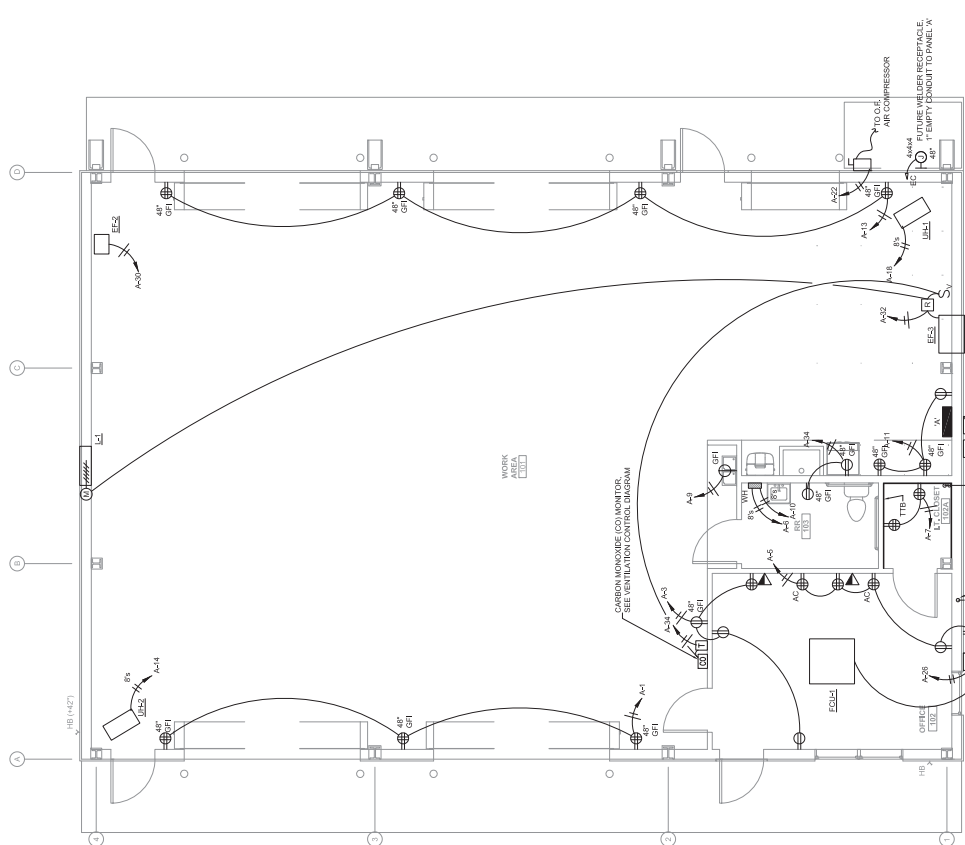
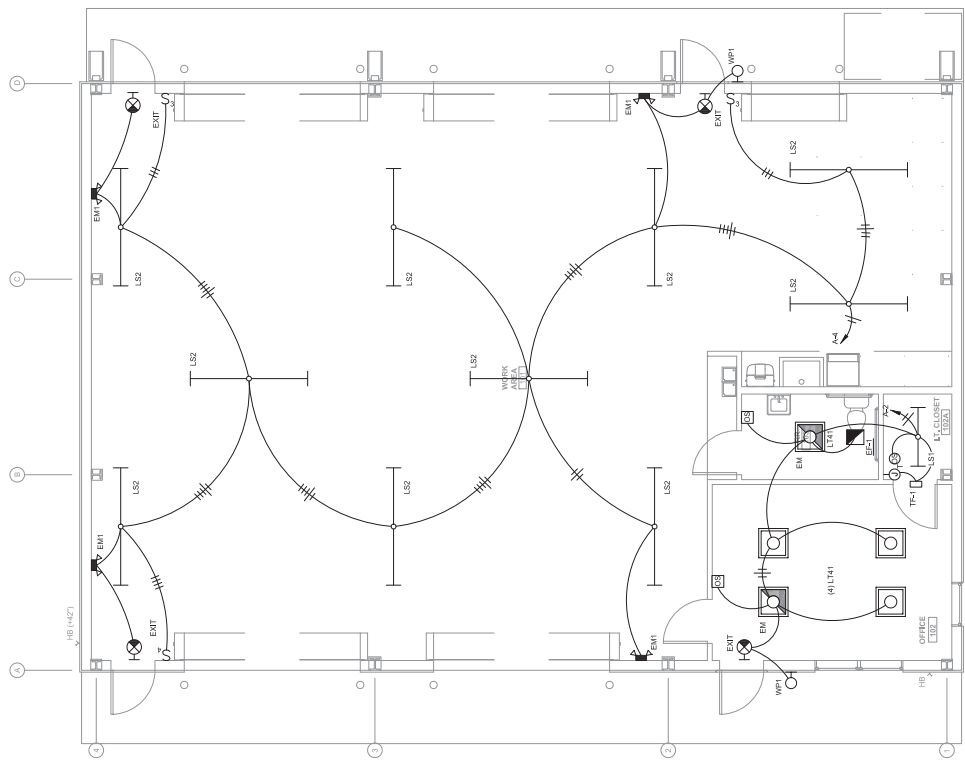
NEW COUNTY WORK BUILDING
 J. LEE VAUSE PARK, LEON COUNTY, FLORIDA
 LEON COUNTY PUBLIC WORKS DEPARTMENT
 2280 MICCOSKEE ROAD, TALLAHASSEE, FLORIDA 32308

DATE	NO.	REVISIONS	BY

ALL DIMENSIONS UNLESS OTHERWISE SPECIFIED ARE IN FEET AND INCHES. DIMENSIONS SHALL BE TO FACE UNLESS OTHERWISE SPECIFIED. THE CONTRACTOR SHALL BE RESPONSIBLE FOR OBTAINING ALL NECESSARY PERMITS AND APPROVALS FROM THE LOCAL, STATE AND FEDERAL AGENCIES. THE CONTRACTOR SHALL BE RESPONSIBLE FOR OBTAINING ALL NECESSARY PERMITS AND APPROVALS FROM THE LOCAL, STATE AND FEDERAL AGENCIES. THE CONTRACTOR SHALL BE RESPONSIBLE FOR OBTAINING ALL NECESSARY PERMITS AND APPROVALS FROM THE LOCAL, STATE AND FEDERAL AGENCIES.

PROJECT	LEONT18003
DRAWN BY	DATE
BUILDING	FLOOR
AREA	AREA
ELECTRICAL	ELECTRICAL
LIGHTING PLANS	LIGHTING PLANS

E2.0
 SHEET OF
 SCALE AS NOTED
 100% CONTRACT DOCUMENTS



McCarty and Associates
 A DIVISION OF PERKINS ASSOCIATES, INC.
 1705 South Coquina Street, Suite 100
 Tallahassee, Florida 32301
 Phone: (904) 771-7323
 Fax: (904) 771-7323
 W. Lee Vause, P.E.
 Project No. 1320118003
 McCarty Project No. 120118003

McCarthy and Associates
 A DIVISION OF FERRON ASSOCIATES, INC.
 1705 South Coakley Street, Suite 100
 Tallahassee, Florida 32301
 Phone: (904) 771-7325
 Fax: (904) 771-7325
 W. Parke Coe 7918
 Florida CPE 31220
 P.E.
 Florida License No. 12201
 McCarthy Project No. 2021010003

McGinniss & Fleming
 ENGINEERING, INC.
 10000 Highway 90, Suite 100
 Tallahassee, Florida 32310
 Phone: (904) 771-7325
 Fax: (904) 771-7325
 W. Parke Coe 7918
 Florida CPE 31220
 P.E.
 Florida License No. 12201
 McCarthy Project No. 2021010003

NEW COUNTY WORK BUILDING
 1. LEE VAUSE PARK, LEON COUNTY, FLORIDA
 LEON COUNTY PUBLIC WORKS DEPARTMENT
 2280 McCooskee Road, Tallahassee, Florida 32308

DATE									
NO.									
REVISIONS									
BY									

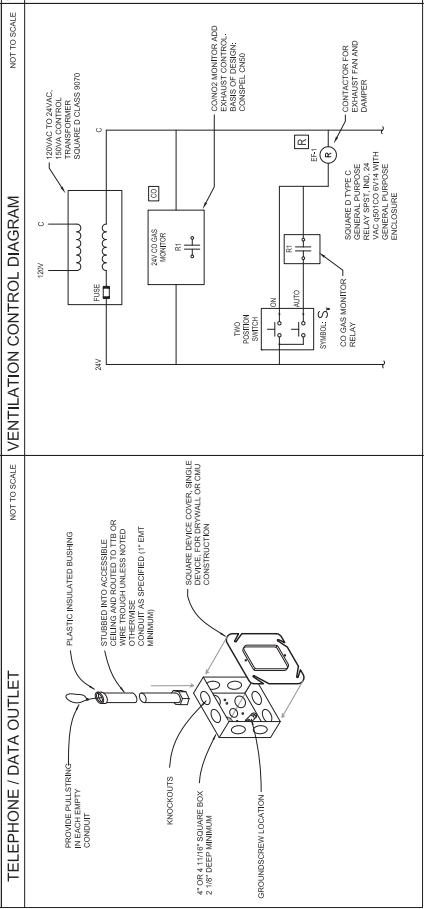
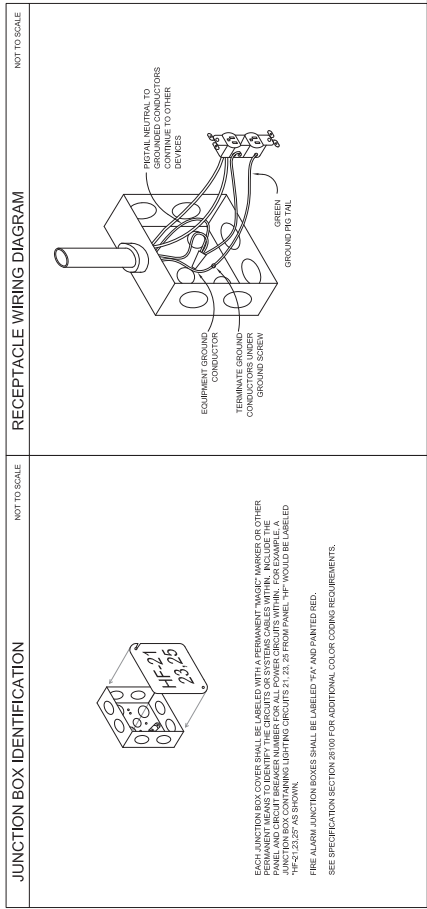
PROJECT: LEON COUNTY WORK BUILDING
 DRAWN BY: DATE: 10/2013
 CHECKED BY: DATE: 10/2013
 APPROVED BY: DATE: 10/2013
 BUILDING: FLOOR: AREA:
 ELECTRICAL DETAILS

E3.0
 SCALE: AS NOTED
 SHEET: OF
 REV: #

McCarthy and Associates
 A DIVISION OF FERRON ASSOCIATES, INC.
 1705 South Coakley Street, Suite 100
 Tallahassee, Florida 32301
 Phone: (904) 771-7325
 Fax: (904) 771-7325
 W. Parke Coe 7918
 Florida CPE 31220
 P.E.
 Florida License No. 12201
 McCarthy Project No. 2021010003

McGinniss & Fleming
 ENGINEERING, INC.
 10000 Highway 90, Suite 100
 Tallahassee, Florida 32310
 Phone: (904) 771-7325
 Fax: (904) 771-7325
 W. Parke Coe 7918
 Florida CPE 31220
 P.E.
 Florida License No. 12201
 McCarthy Project No. 2021010003

NEW COUNTY WORK BUILDING
 1. LEE VAUSE PARK, LEON COUNTY, FLORIDA
 LEON COUNTY PUBLIC WORKS DEPARTMENT
 2280 McCooskee Road, Tallahassee, Florida 32308





A DIVISION OF PERKINS ASSOCIATES, INC.
 1705 Suncoast Parkway, Suite 100
 Fort Lauderdale, FL 33304
 (954) 771-7200
 W. Baskin, P.E., P.L.
 W. Baskin, P.E., P.L.
 McCarthy Project No. LE0118005

McGinnis & Fleming
 Engineers, Inc.
 4000 N.W. 12th Street, Suite 200
 Ft. Lauderdale, FL 33309
 (954) 575-1234

LEON COUNTY PUBLIC WORKS DEPARTMENT
 2280 Mccoskoe Road, Tallahassee, Florida 32308

NEW COUNTY WORK BUILDING

J. LEE VAUSE PARK, LEON COUNTY, FLORIDA

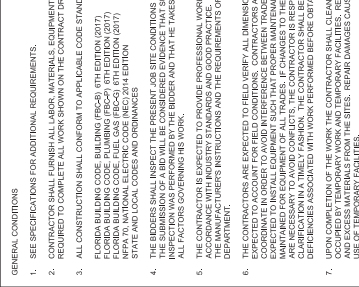
LEON COUNTY PUBLIC WORKS DEPARTMENT

PROJECT	LEON18005
DRAWN BY	DATE
CHECKED BY	DATE
DATE	DATE
NO.	NO.
DATE	DATE
REVISIONS	

SCALE	SHEET	REV
AS NOTED	CP	0001

P1.0

PLUMBING LEGEND



PLUMBING NOTES

- SEE SPECIFICATIONS FOR ADDITIONAL REQUIREMENTS.
- CONTRACTOR SHALL FURNISH LABOR, MATERIALS, EQUIPMENT AND INCIDENTALS REQUIRED TO COMPLETE ALL WORK SHOWN ON THE CONTRACT DRAWINGS.
- ALL CONSTRUCTION SHALL CONFORM TO APPLICABLE CODE STANDARDS INCLUDING FLORIDA BUILDING CODE (FBC) (6TH EDITION (2017)), FLORIDA MECHANICAL CODE (FMC) (6TH EDITION (2017)), FLORIDA PLUMBING CODE (FPC) (6TH EDITION (2017)), FLORIDA GAS PIPING CODE (FGPC) (6TH EDITION (2017)), STATE AND LOCAL CODES AND ORDINANCES.
- THE SUBMITTER SHALL INSPECT THE PRESENT JOB SITE CONDITIONS BEFORE PREPARING A BID. THE SUBMITTER SHALL BE RESPONSIBLE FOR VERIFYING THE EXISTING CONDITIONS AND ALL FACTORS GOVERNING HIS WORK.
- THE CONTRACTOR IS EXPECTED TO PROVIDE PROFESSIONAL WORK PERFORMED IN ACCORDANCE WITH INDUSTRY STANDARDS AND GOOD PRACTICES. WORK SHALL CONFORM TO ALL APPLICABLE CODES AND ORDINANCES.
- THE CONTRACTOR SHALL VERIFY ALL DIMENSIONS. CONTRACTORS ARE RESPONSIBLE FOR COORDINATING ALL TRADES AND INTERFERENCES BETWEEN TRADES. CONTRACTORS ARE EXPECTED TO INSTALL EQUIPMENT SUCH THAT PROPER MAINTENANCE CLEARANCES ARE MAINTAINED. CONTRACTORS SHALL BE RESPONSIBLE FOR VERIFYING ALL DIMENSIONS AND INTERFERENCES ASSOCIATED WITH WORK PERFORMED BEFORE OBTAINING PERMITS.
- UPON COMPLETION OF THE WORK THE CONTRACTOR SHALL CLEAN SPACES THAT WERE OCCUPIED BY TEMPORARY WORK AND TEMPORARY FACILITIES. REMOVE DEBRIS, RUBBERHIPS AND OTHER DEBRIS FROM THE JOB SITES. REPAIR DAMAGES CAUSED BY INSTALLATION OR USE OF TEMPORARY FACILITIES.

GENERAL PLUMBING NOTES

- PLUMBING PLANS ARE SCHEMATIC. LOCATE BRINGS TO AVOID FIELD INTERFERENCES. CHANGES IN THE PIPING SCHEMATIC REQUIRE PRIOR APPROVAL OF THE ENGINEER.
- TRANSITION CONNECTION BETWEEN SITE PIPING AND BUILDING PLUMBING SHALL OCCUR IN AN ACCESSIBLE GREEN SPACE.
- THE CONTRACTOR IS EXPECTED TO VERIFY DIMENSIONS AND FIELD FABRICATE PIPING AS SHOWN ON THE PLANS. CONTRACTORS SHALL BE RESPONSIBLE FOR VERIFYING ALL DIMENSIONS AND FIELD FABRICATE PIPING AS SHOWN ON THE PLANS.
- PIPING TO ANY NEW WORK THE CONTRACTOR SHALL VERIFY BY ALL MEANS, SHALL BE THE DIRECTION OF FLOW OF ALL EXISTING PIPING THAT WILL BE TIED INTO THE NEW WORK. CONTRACTORS SHALL BE RESPONSIBLE FOR VERIFYING ALL DIMENSIONS AND FIELD FABRICATE PIPING AS SHOWN ON THE PLANS.

MATERIALS AND DEVICES

- ALL MATERIALS, EQUIPMENT AND APPARATUS COVERED BY THIS SPECIFICATION SHALL BE NEW, OF CURRENT MANUFACTURE.
- SEE PROJECT SPECIFICATIONS FOR MATERIALS.
- CONNECTION JOINTS BETWEEN PLASTIC AND METALLIC PIPE SHALL BE MADE WITH TRANSITION FITTING FOR THE SPECIFIC PURPOSE.
- CONNECTIONS TO WATER HEATERS AND BETWEEN FERROUS AND NONFERROUS METALLIC PIPE SHALL BE MADE WITH DIELECTRIC FITTINGS.

PIPING NOTES

- INSTALL GRAVITY LINES AT UNIFORM GRADES.
- INSTALL SLEEVES AT ALL PENETRATIONS WHERE CONCRETE MIGHT CONTACT COPPER PIPING. PROVIDE SLEEVES AND SEAL ALL PENETRATIONS OF FULL HEIGHT WALLS AND FLOORS. PROVIDE SLEEVES AND SEAL ALL PENETRATIONS OF FULL HEIGHT WALLS AND FLOORS WHERE COPPER PIPING IS ENCASED WITHIN CMU WALLS.
- LOCATE ALL VALVES AND OTHER DEVICES WHICH REQUIRE MAINTENANCE IN ACCESSIBLE LOCATIONS. PROVIDE ACCESS PANELS IF NECESSARY.
- PIPING INSTALLATIONS ARE EXPECTED TO BE RIGID, SUPPORT AND SECURE PIPING IN ACCORDANCE WITH THE SPECIFICATIONS.
- SEE SPECIFICATIONS FOR HOT WATER PIPING INSULATION REQUIREMENTS. PROFESSIONAL INSTALLATION IS EXPECTED.
- LABEL ALL HOT, TEMPERED & COLD DOMESTIC WATER SUPPLY & RETURN PIPING AT EACH VALVE LOCATION & NO LESS THAN 20' O.C.

FITURES AND TRIM

- EQUIPMENT SHALL BE UNDAMAGED AND CLEANED.
- ALL EXPOSED SINK AND LAVATORY DRAIN PIPING SHALL BE CHROME PLATED BRASS NO LESS THAN 1/2" GAUGE. TRAPS SHALL BE 1/2" GAUGE FULLY CAST BRASS WITH CLEANOUT FLUJES.
- PVC PIPING IS ALLOWED FOR SINK AND LAVATORY SINK DRAINS.
- ESCUTCHEONS SHALL BE CHROME PLATED CAST BRASS WITH SET SCREW. CLOSEOUT, TESTING AND INSPECTIONS

- COORDINATE INSPECTIONS WITH THE SPECIFICATIONS.
- ALL INSPECTIONS SHALL BE CONDUCTED AND TESTED IN ACCORDANCE WITH THE SPECIFICATIONS OUTLINED IN THE FPC, PLUMBING CODE.
- ALL WASTE AND VENT PIPING SHALL BE LEAK TESTED IN ACCORDANCE WITH THE FPC. PLUMBING CODE BUT NOT LESS THAN 10' OF HEAD.
- CONTRACTOR SHALL CAMERA SEWER LINES AND PROVIDE SMOKE TEST OF THE ENTIRE SEWER AND VENT SYSTEMS FOR EACH WIP BEFORE ACCEPTATION AND APPROVAL. PROVIDE SMOKE TEST RESULTS TO THE ENGINEER AND ARCHITECT. SMOKE TEST SHALL BE CONDUCTED AT EACH FLOOR & AS NEEDED FOR COMPLETE TESTING.

ABBREVIATIONS

- AC ABOVE CEILING
- AFF ABOVE FINISHED FLOOR
- BFP BACKFLOW PREVENTER
- AS ABOVE SLAB
- BSG BELOW GRADE
- CFH CUBIC FEET PER HOUR
- CW COLD WATER
- DWS DRAIN WATER SERVICE
- EXIST EXISTING
- FD FLOOR DRAIN
- FD FLOOR DRAIN
- GFH GALLONS PER HOUR
- GPM GALLONS PER MINUTE
- HV HOT WATER
- HV HOT WATER
- MBH THOUSAND BTU PER HOUR
- N.C. NORMALLY CLOSED
- NG NATURAL GAS
- NO NOT
- POI PLUMBING OPERATING INSTITUTE
- PSH PRESSURE STOP VALVE
- S SANITARY
- SN SINK
- TD TRAP DRAIN
- TP TRAP PRIMER
- U.M.O. UNLESS NOTED OTHERWISE
- W WASTE
- WCO WALL CLEANOUT
- WT EXPANSION TANK

FIXTURE UNIT CALCULATIONS

FIXTURE TYPE	QUANTITY	DRAINAGE FIXTURE UNITS				WATER SUPPLY FIXTURE UNITS			
		PER FIXTURE	TOTAL	COLD	SUBTOTAL	HOT	SUBTOTAL	HOT & COLD	SUBTOTAL
WATER CLOSET (FLUSH TANK)	1	4	4	5	5	0	0	5	5
LAVATORY (PUBLIC)	1	1	1	1.5	1.5	1.5	2	2	2
MOP SINK	1	2	2	2.25	2.25	2.25	3	3	3
DRINKING FOUNTAIN	2	0.5	1.0	0.25	0.50	0	0	0	0
HOSE BIBB	2	0	0	2.5	5	0	0	2.5	5
SUBTOTAL			8.0		14.25		3.75		15.0
DEMAND (GPM)					17		8		18

WATER HAMMER ARRESTER SCHEDULE

CHART A - FOR COMPARTMENTS	PIPE SIZE	TYPE	LENGTH IN FEET	NOMINAL PIPE DIAMETER						
				1/2"	3/4"	1"	1 1/4"	1 1/2"	2"	
A	1/2"	1/2"	10'	A	A	B	C	D	E	
B	3/4"	3/4"	20'	A	A	B	C	D	E	
C	1"	1"	30'	A	A	B	C	D	E	
D	1 1/4"	1 1/4"	50'	A	A	B	C	D	E	
E	1 1/2"	1 1/2"	100'	C	D	E	F	G	H	
F	2"	2"	150'	C	D	E	F	G	H	

NOTES:
 1. WATER HAMMER ARRESTERS SHALL BE INSTALLED IN ACCORDANCE WITH STANDARD PIPING.

McCarthy and Associates
 A DIVISION OF PERMON ASSOCIATES, INC.
 1705 Gulf Stream Parkway, Suite 100
 Fort Lauderdale, FL 33304
 (954) 771-7200
 W. Brad Ripstein, P.E.
 W. Brad Ripstein, P.E.
 McCarthy Project No. LE0118003

McGinnis & Fleming
 Engineering, Inc.
 2280 Miccosukee Road, Tallahassee, Florida 32308
 904.933.2222

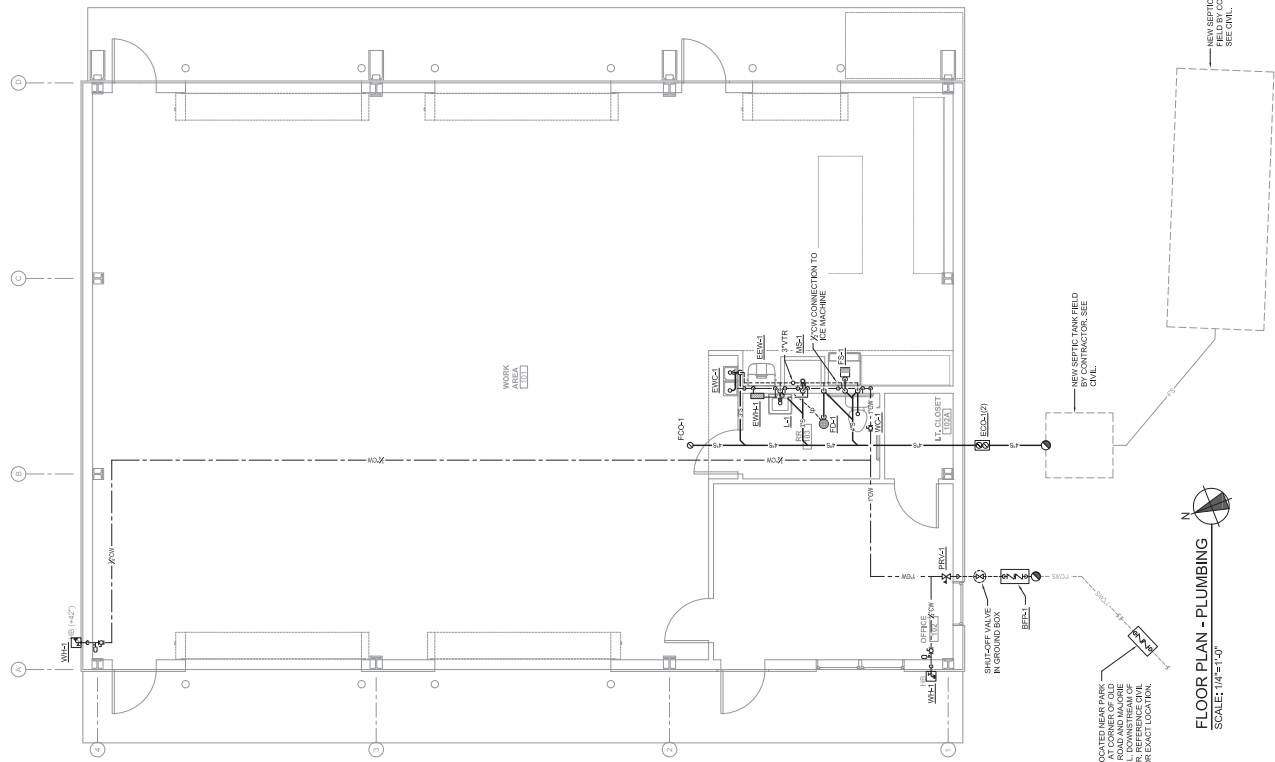
NEW COUNTY WORK BUILDING
 J. LEE VAUSE PARK, LEON COUNTY, FLORIDA
 LEON COUNTY PUBLIC WORKS DEPARTMENT

NO.	DATE	REVISIONS

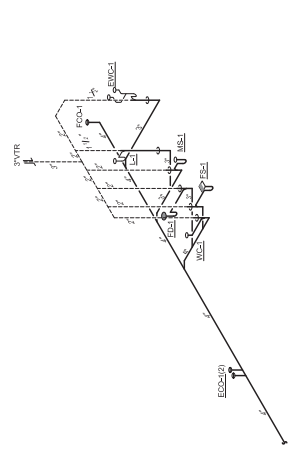
ALL DIMENSIONS UNLESS OTHERWISE SPECIFIED ARE IN FEET AND INCHES. DIMENSIONS SHALL BE TO FACE UNLESS OTHERWISE SPECIFIED. THE CONTRACTOR SHALL BE RESPONSIBLE FOR OBTAINING ALL NECESSARY PERMITS AND APPROVALS FROM THE LOCAL AND STATE AGENCIES. THE CONTRACTOR SHALL BE RESPONSIBLE FOR OBTAINING ALL NECESSARY PERMITS AND APPROVALS FROM THE LOCAL AND STATE AGENCIES. THE CONTRACTOR SHALL BE RESPONSIBLE FOR OBTAINING ALL NECESSARY PERMITS AND APPROVALS FROM THE LOCAL AND STATE AGENCIES.

PROJECT: LE0118003
 DRAWN BY: JRM
 CHECKED BY: JRM
 DATE: 06/10/2013
 SCALE: AS NOTED

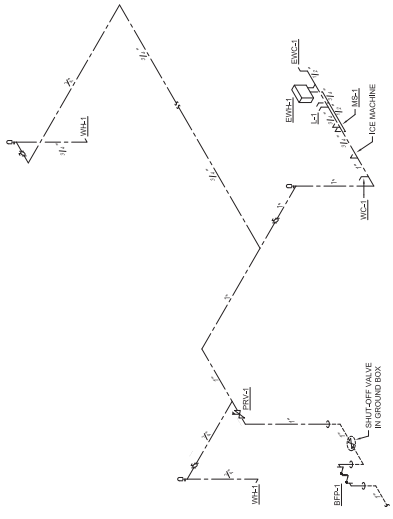
P2.0
 SHEET NO. 02
 OF 02
 REV. 01



FLOOR PLAN - PLUMBING
 SCALE: 1/8" = 1'-0"



PLUMBING RISER - SANITARY
 NTS



PLUMBING RISER - DOMESTIC WATER
 NTS

