

LINENE WOODS TRIBUTARY DRAINAGE IMPROVEMENTS AT JOHN HANCOCK DR.

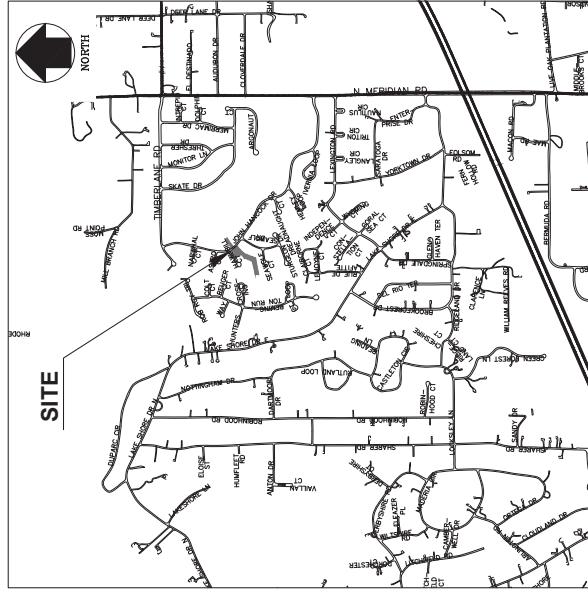
LEON COUNTY DEPARTMENT OF PUBLIC WORKS DIVISION OF ENGINEERING

2280 MICCOSUKEE ROAD
TALLAHASSEE, FLORIDA

INDEX OF SHEETS

- 1 COVER
- 2 EXISTING CONDITIONS MAP
- 3 DEMOLITION AND SWPPP
- 4 SWPPP AND TREE PROTECTION DETAILS
- 5 SWPPP AND GENERAL NOTES
- 6 DRAINAGE PLAN & PROFILE
- 7 CONSTRUCTION SEQUENCE AND DRAINAGE DETAILS
- 8 DRAINAGE CHANNEL CROSS SECTIONS
- 9 LANDSCAPE PLAN
- 10 LANDSCAPE NOTES AND DETAILS

INCLUDED IN PLANS BY REFERENCE:
 FLORIDA DEPARTMENT OF TRANSPORTATION,
 DESIGN STANDARDS (2016 EDITION)
 FLORIDA DEPARTMENT OF TRANSPORTATION,
 STANDARD SPECIFICATIONS FOR ROAD AND
 BRIDGE CONSTRUCTION (2016 EDITION)



LOCATION MAP
N.T.S.

Theresa Heiker, P.E., Leon County Project Manager



David W. Hutcherson, P.E.
 License Number: 38670
 DATE: 04/23/2019

COMMISSIONERS:
 WILLIAM C. PROCTOR, JR.,
 DISTRICT 1
 JIMBO JACKSON
 DISTRICT 2
 RICK MINOR
 DISTRICT 3
 BRYAN PESLOGE
 DISTRICT 4
 KRISTIN DOZIER
 DISTRICT 5
 MARY ANN LINDLEY
 AT LARGE
 NICK MADDOX
 AT LARGE

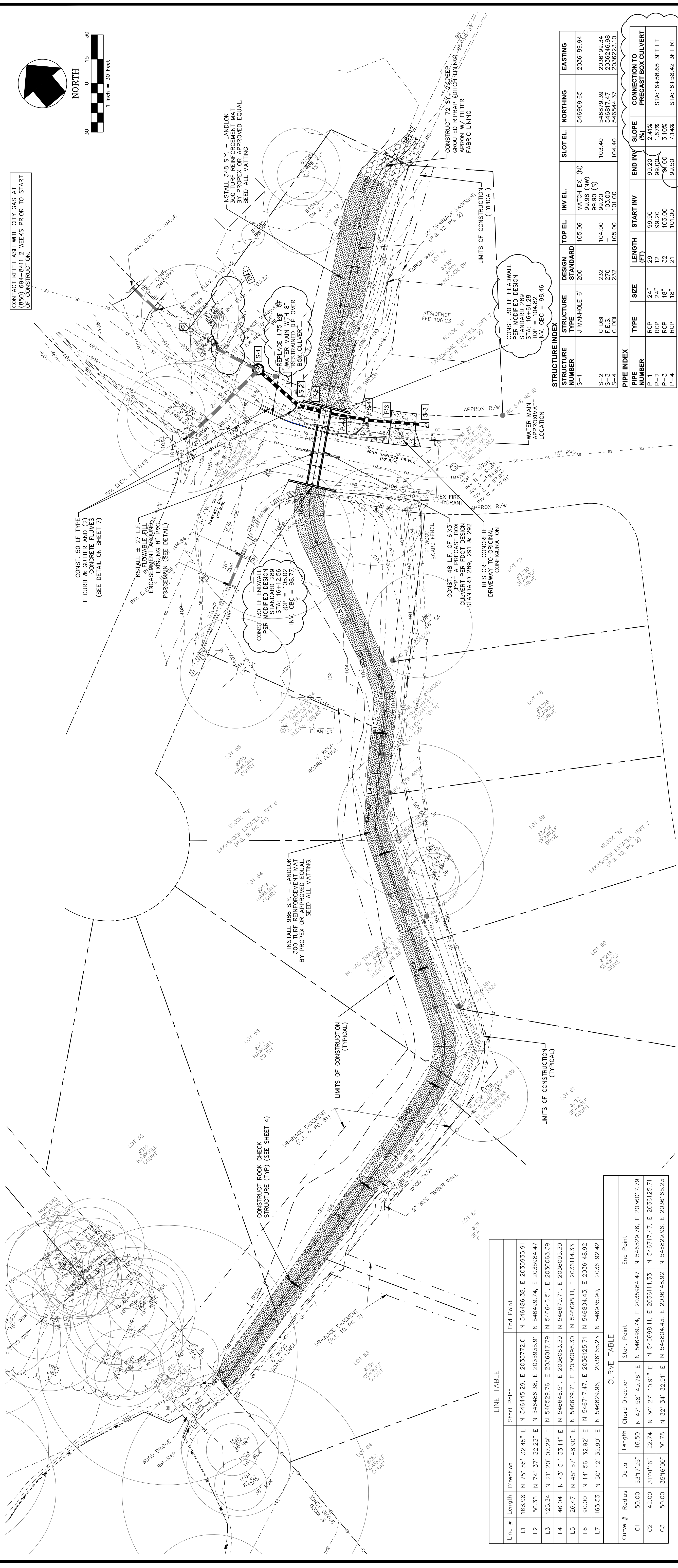


VINCENT LONG
 COUNTY ADMINISTRATOR
 TONY PARK
 PUBLIC WORKS DIRECTOR

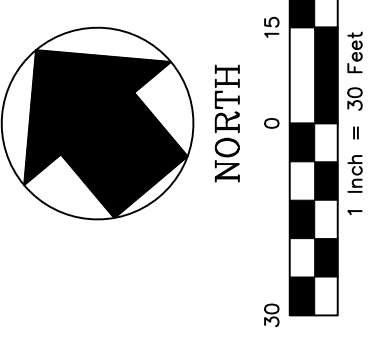
PREPARED BY:



GGI, LLC dba GENESIS GROUP
 2507 CALLAWAY ROAD, SUITE 100
 TALLAHASSEE, FLORIDA 32303
 (850) 224-4400 FAX (850) 681-3600
 FL CA 00009660 FL LC 26000202
 www.GenesisGroup.com



CONTACT KEITH ASH WITH CITY GAS AT (850) 894-8411 2 WEEKS PRIOR TO START OF CONSTRUCTION.



LINE TABLE

Line #	Length	Direction	Start Point	End Point
L1	168.98	N 75° 55' 32.45" E	N 546444.29, E 2033772.01	N 546486.38, E 2035935.91
L2	50.36	N 74° 37' 32.23" E	N 546486.38, E 2035935.91	N 546499.74, E 2035994.47
L3	125.34	N 21° 07' 29" E	N 546529.76, E 2036017.79	N 546646.51, E 2036063.39
L4	46.04	N 43° 51' 33.14" E	N 546646.51, E 2036063.39	N 546679.71, E 2036095.30
L5	26.47	N 45° 57' 48.90" E	N 546679.71, E 2036095.30	N 546698.11, E 2036114.33
L6	90.00	N 14° 56' 32.92" E	N 546717.47, E 2036125.71	N 546804.43, E 2036148.92
L7	165.53	N 30° 12' 32.90" E	N 546829.96, E 2036165.23	N 546935.90, E 2036292.42

CURVE TABLE

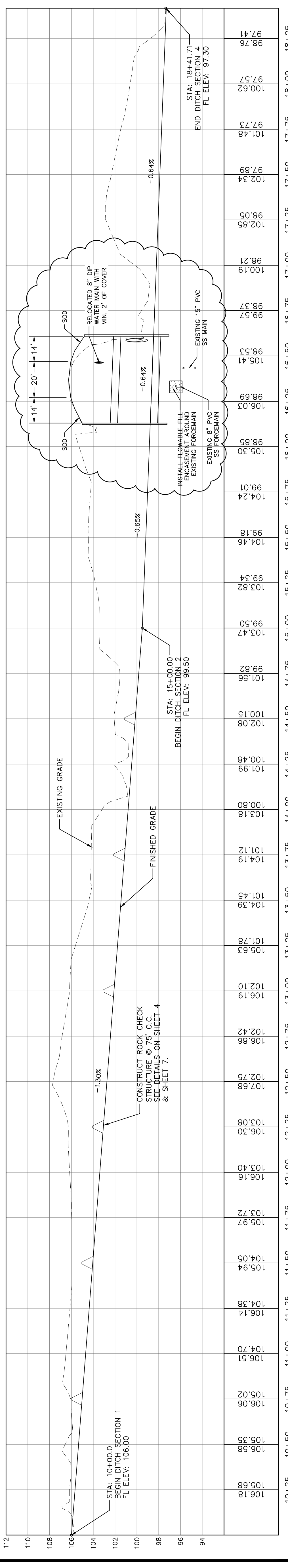
Curve #	Radius	Delta	Length	Chord Direction	Start Point	End Point
C1	50.00	531°725'	46.50	N 47° 58' 49.76" E	N 546499.74, E 2035994.47	N 546529.76, E 2036017.79
C2	42.00	317°016'	22.74	N 30° 27' 10.91" E	N 546698.11, E 2036114.33	N 546717.47, E 2036125.71
C3	50.00	351°600'	30.78	N 32° 34' 32.91" E	N 546804.43, E 2036148.92	N 546829.96, E 2036165.23

STRUCTURE INDEX

STRUCTURE NUMBER	STRUCTURE TYPE	DESIGN STANDARD	TOP ELEV.	IN V. ELEV.	SLOT ELEV.	NORTHING	EASTING
S-1	J MANHOLE 6"	200	105.06	99.98 (NW)	99.98 (S)	546902.65	2036189.94
S-2	C DRI	232	104.00	99.98 (S)	99.98 (S)	546879.39	2036198.14
S-3	F.E.S.	270	103.00	103.00	103.00	546817.47	2036246.98
S-4	C DRI	232	105.00	101.00	101.00	546844.37	2036223.10

PIPE INDEX

PIPE NUMBER	TYPE	SIZE	LENGTH (FT)	START INV.	END INV.	SLOPE (%)	CONNECTION TO
P-1	RCP	24"	29	99.90	99.20	2.41%	PRECAST BOX CULVERT
P-2	RCP	24"	12	99.20	99.00	1.67%	STA:16+58.65 3FT LT
P-3	RCP	18"	12	103.00	103.00	3.11%	STA:16+58.42 3FT RT
P-4	RCP	18"	21	101.00	99.50	7.14%	STA:16+58.42 3FT RT



LEON COUNTY PUBLIC WORKS

LEON WOODS DRAINAGE IMPROVEMENTS

DRAINAGE PLAN AND PROFILE

PROJECT NUMBER: LCP5-003
DATE: 02/13/2018
SHEET NUMBER: 6

DESIGNED BY: D.W.H.
DRAWN BY: S.R.W.
CHECKED BY: D.W.H.
SCALE: 1" = 30'

RESIGNED BY: [Blank]
DATE: [Blank]

DESCRIPTION: [Blank]

REVISIONS: [Blank]

FL CA 0009660
FL LB 0006516
FL LC 2600020
(850) 224-4400 (850) 681-3600 FAX
www.GenesisGroup.com

GENESIS FROM VISION TO REALITY

GGI, LLC dba GENESIS GROUP
2507 CALLAWAY ROAD, SUITE 100
TALLAHASSEE, FLORIDA 32303

PREPARED FOR: LEON COUNTY PUBLIC WORKS

PROJECT NAME: LEON WOODS DRAINAGE IMPROVEMENTS

SHEET TITLE: DRAINAGE PLAN AND PROFILE

SEAL: [Blank]

DATE: [Blank]

PROJECT NUMBER: LCP5-003

DATE: 02/13/2018

SHEET NUMBER: 6

DESIGNED BY: D.W.H.

DRAWN BY: S.R.W.

CHECKED BY: D.W.H.

SCALE: 1" = 30'

RESIGNED BY: [Blank]

DATE: [Blank]

DESCRIPTION: [Blank]

REVISIONS: [Blank]

FL CA 0009660
FL LB 0006516
FL LC 2600020
(850) 224-4400 (850) 681-3600 FAX
www.GenesisGroup.com

GENESIS FROM VISION TO REALITY

GGI, LLC dba GENESIS GROUP
2507 CALLAWAY ROAD, SUITE 100
TALLAHASSEE, FLORIDA 32303

PREPARED FOR: LEON COUNTY PUBLIC WORKS

PROJECT NAME: LEON WOODS DRAINAGE IMPROVEMENTS

SHEET TITLE: DRAINAGE PLAN AND PROFILE

SEAL: [Blank]

DATE: [Blank]

PROJECT NUMBER: LCP5-003

DATE: 02/13/2018

SHEET NUMBER: 6

DESIGNED BY: D.W.H.

DRAWN BY: S.R.W.

CHECKED BY: D.W.H.

SCALE: 1" = 30'

RESIGNED BY: [Blank]

DATE: [Blank]

DESCRIPTION: [Blank]

REVISIONS: [Blank]

FL CA 0009660
FL LB 0006516
FL LC 2600020
(850) 224-4400 (850) 681-3600 FAX
www.GenesisGroup.com

GENESIS FROM VISION TO REALITY

GGI, LLC dba GENESIS GROUP
2507 CALLAWAY ROAD, SUITE 100
TALLAHASSEE, FLORIDA 32303

- CONSTRUCTION SEQUENCE**
- 24 HOURS NOTICE MUST BE GIVEN PRIOR TO ANY CONSTRUCTION ACTIVITIES. THE CONTRACTOR SHALL REQUEST AN ON-SITE PRE-CONSTRUCTION CONFERENCE WITH THE ARCHITECT, ENGINEER OF RECORD, LEON COUNTY ENVIRONMENTAL INSPECTOR AND THE NORTHWEST WATER MANAGEMENT DISTRICT, PRIOR TO COMMENCEMENT OF CONSTRUCTION ACTIVITIES.
 - POST ALL APPLICABLE PERMIT PLACARDS. THE PERMIT PLACARDS SHALL NOT BE NAILED TO TREES.
 - FLAG OR STAKE THE PROPOSED LIMITS OF CLEARING.
 - CONSTRUCT SEDIMENTATION CONTROL DEVICES.
 - THE ENVIRONMENTAL INSPECTOR MUST APPROVE THE INSTALLATION OF EROSION CONTROL DEVICES AND STAKED LIMITS OF CONSTRUCTION PRIOR TO DISTURBANCE ACTIVITIES.
 - CLEAR & GRUB AREAS WITHIN THE LIMITS OF CONSTRUCTION.
 - REMOVE A MINIMUM OF SIX (6) INCHES OF TOPSOIL FROM ALL AREAS OF THE SITE WHERE IMPROVEMENTS ARE TO BE CONSTRUCTED. STOCKPILE AND STABILIZE ON-SITE FOR REDISTRIBUTION ON SLOPES AND SHOULDERS. INSTALL EROSION CONTROL DEVICES AS MAY BE REQUIRED BY THE LEON COUNTY ENVIRONMENTAL INSPECTOR.
 - DEMOLISH EXISTING ROAD AS REQUIRED TO INSTALL NEW BOX CULVERT AT THE DESIGNED ELEVATIONS. ROAD CLOSURES, EXISTING ROAD DEMOLITION AND NEW CULVERT INSTALLATION CANNOT START UNTIL JUNE 2, 2019 AND MUST BE COMPLETE BY JULY 31, 2019.
 - GRADE THE CONVEYANCE SYSTEM WEST OF THE NEW CONCRETE CULVERT AND INSTALL STABILIZATION MATS, TEMPORARY ROCK CHECK DAMS, AND HYDROSEED ALL DISTURBED AREAS.
 - PLACE SELECT FILL MATERIAL WHERE REQUIRED IN 8 INCH MAXIMUM LAYERS (SANDY SILT CLAY) TO ACHIEVE A MINIMUM OF 15% TO 20% MOISTURE DENSITY AND PLACED IN ANOTHER, WHERE ON-SITE MATERIAL IS TO BE CUT FROM ONE SOURCE AND PLACED IN ANOTHER, THIS MATERIAL MUST BE OF SATISFACTORY GRADE AT THE ENGINEER'S DIRECTION.
 - ONCE THE CONVEYANCE SYSTEM IS STABILIZED BEGIN INSTALLATION OF THE TURF REINFORCEMENT MAT STABILIZATION SYSTEM AND REMOVE THE TEMPORARY ROCK DAMS AS THE CONSTRUCTION PROGRESSES.
 - INSTALL ALL UNDERGROUND UTILITIES AND STORM DRAINAGE PIPES AS REQUIRED. PROTECT ALL STORM DRAINAGE INLETS WITH INLET PROTECTION UNTIL A PERMANENT VEGETATIVE COVER IS ESTABLISHED.
 - CONSTRUCT ALL REMAINING IMPROVEMENTS AS INDICATED IN THE PLANS AND SPECIFICATIONS.
 - REMOVE ALL STOCKPILE FROM SITE. INSTALL LANDSCAPING.
 - CONTRACTOR SHALL PROVIDE AS-BUILT DRAWINGS OF ALL FINISHED IMPROVEMENTS INCLUDING STORMWATER AND LANDSCAPE IMPROVEMENTS. AS-BUILT DRAWINGS WILL BE SUBMITTED PRIOR TO FINAL INSPECTION.
 - FIELD INSPECTION AND CLEAN UP.

DESIGNED BY: **D.W.H.**
 DRAWN BY: **S.R.W.**
 CHECKED BY: **D.W.H.**
 SCALE: **1" = 30'**

PROVIDED ADDITIONAL PAYMENT SECTION DETAIL DESCRIPTION REVISIONS

1 05/09/19

FL CA 00009660
 FL LB 0006516
 FL LC 26000202
 (850) 224-4400 (850) 681-3600 FAX
 www.GenesisGroup.com
 TALLAHASSEE, FLORIDA 32303

GENESIS
 FROM VISION TO REALITY

LEON COUNTY
 PUBLIC WORKS

LEON COUNTY
 PUBLIC WORKS

LEON COUNTY
 PUBLIC WORKS

LEON COUNTY
 PUBLIC WORKS

LEON COUNTY
 PUBLIC WORKS

LEON COUNTY
 PUBLIC WORKS

LEON COUNTY
 PUBLIC WORKS

LEON COUNTY
 PUBLIC WORKS

LEON COUNTY
 PUBLIC WORKS

LEON COUNTY
 PUBLIC WORKS

LEON COUNTY
 PUBLIC WORKS

LEON COUNTY
 PUBLIC WORKS

LEON COUNTY
 PUBLIC WORKS

LEON COUNTY
 PUBLIC WORKS

LEON COUNTY
 PUBLIC WORKS

LEON COUNTY
 PUBLIC WORKS

LEON COUNTY
 PUBLIC WORKS

LEON COUNTY
 PUBLIC WORKS

LEON COUNTY
 PUBLIC WORKS

LEON COUNTY
 PUBLIC WORKS

LEON COUNTY
 PUBLIC WORKS

LEON COUNTY
 PUBLIC WORKS

LEON COUNTY
 PUBLIC WORKS

LEON COUNTY
 PUBLIC WORKS

LEON COUNTY
 PUBLIC WORKS

LEON COUNTY
 PUBLIC WORKS

LEON COUNTY
 PUBLIC WORKS

LEON COUNTY
 PUBLIC WORKS

LEON COUNTY
 PUBLIC WORKS

LEON COUNTY
 PUBLIC WORKS

LEON COUNTY
 PUBLIC WORKS

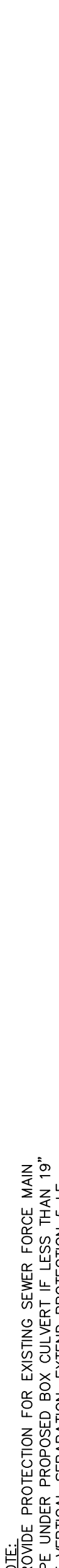
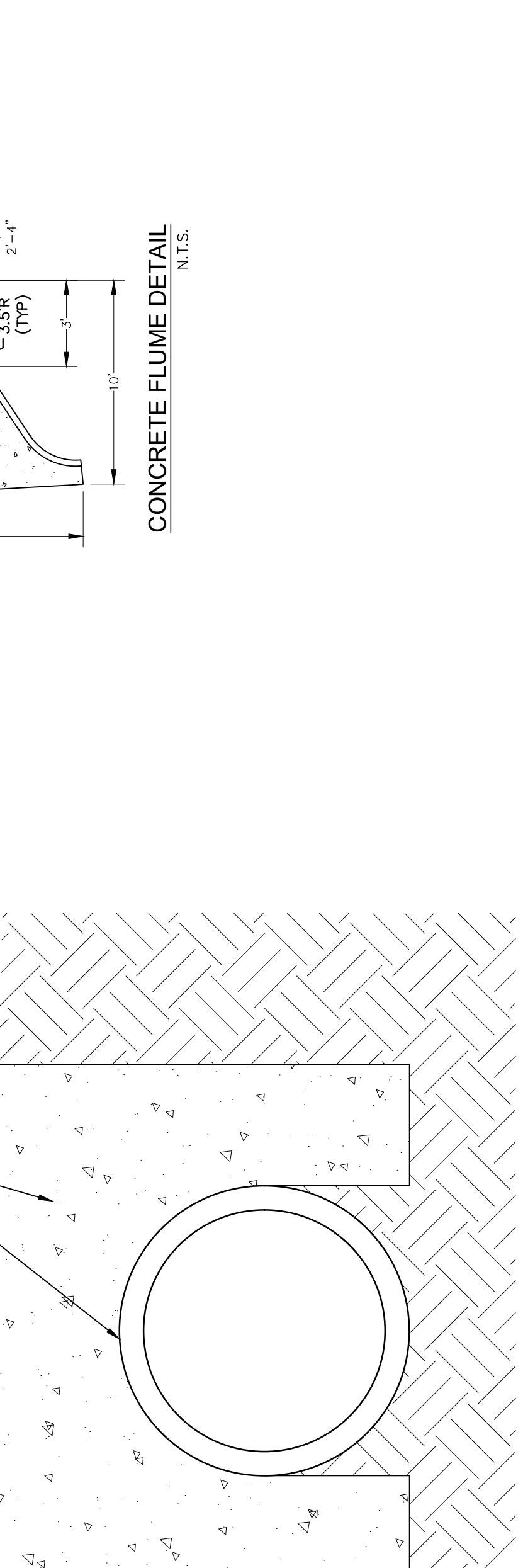
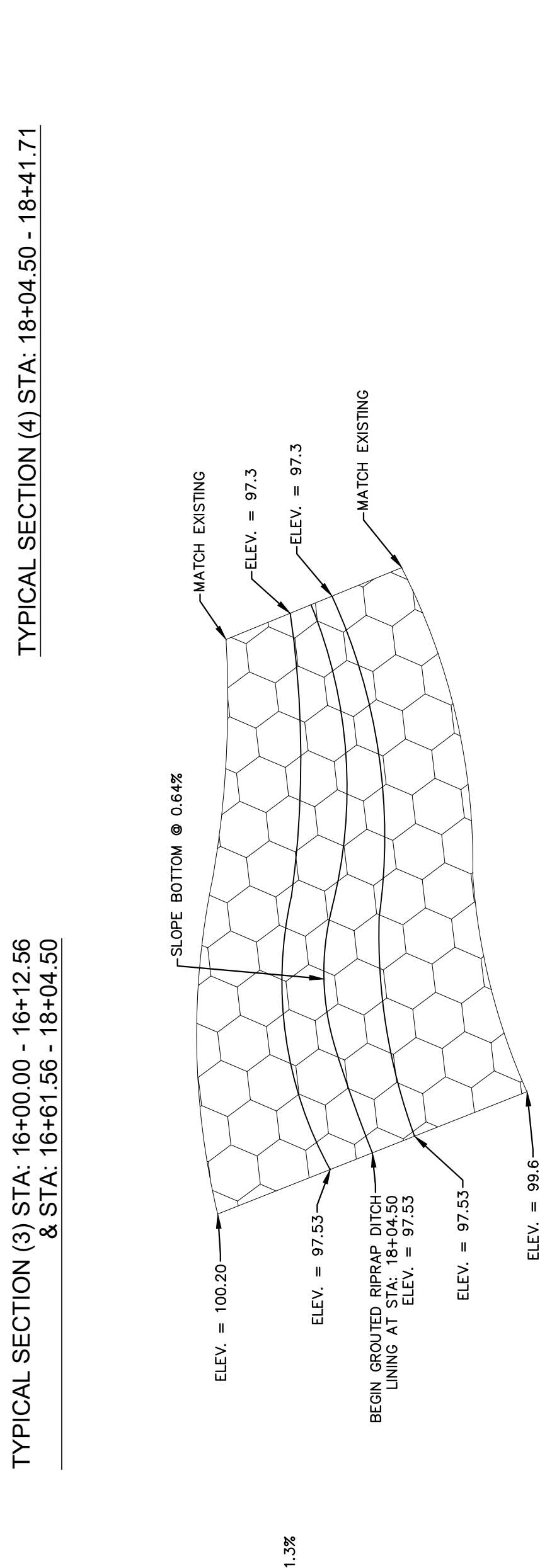
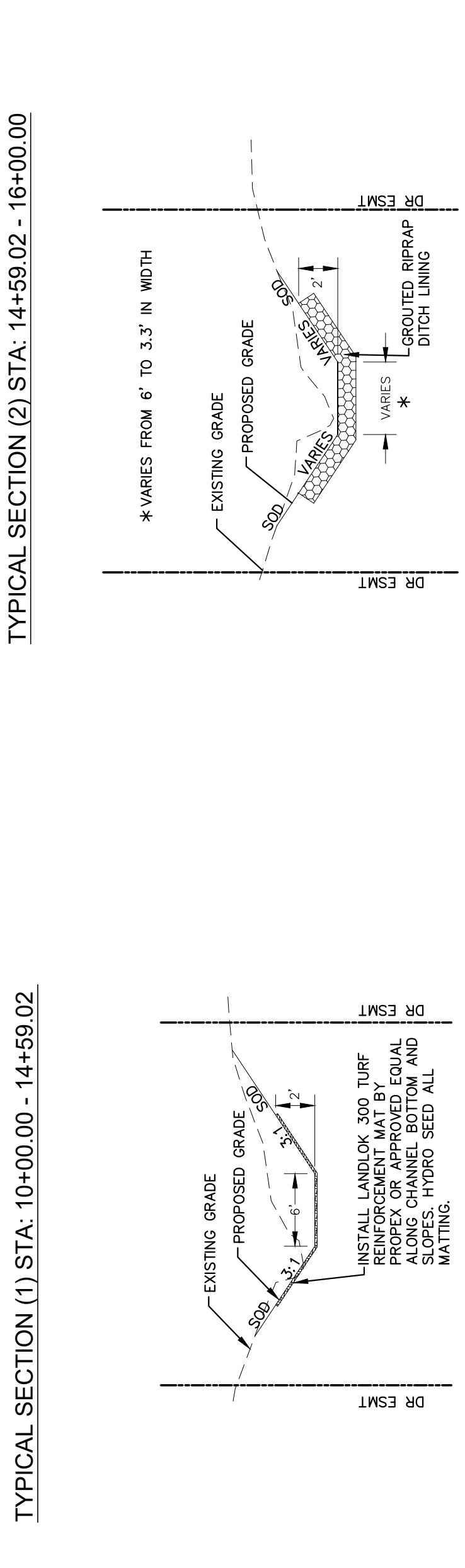
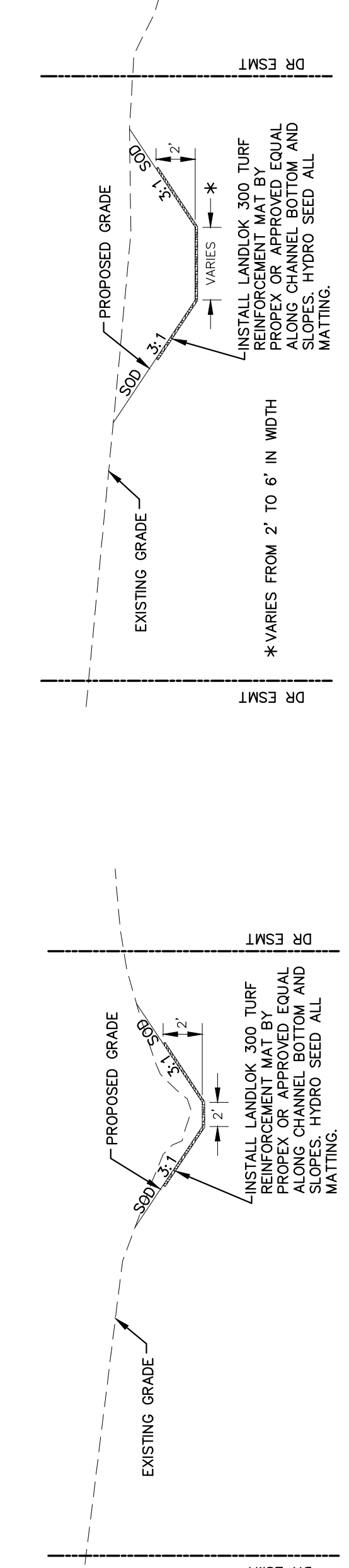
LEON COUNTY
 PUBLIC WORKS

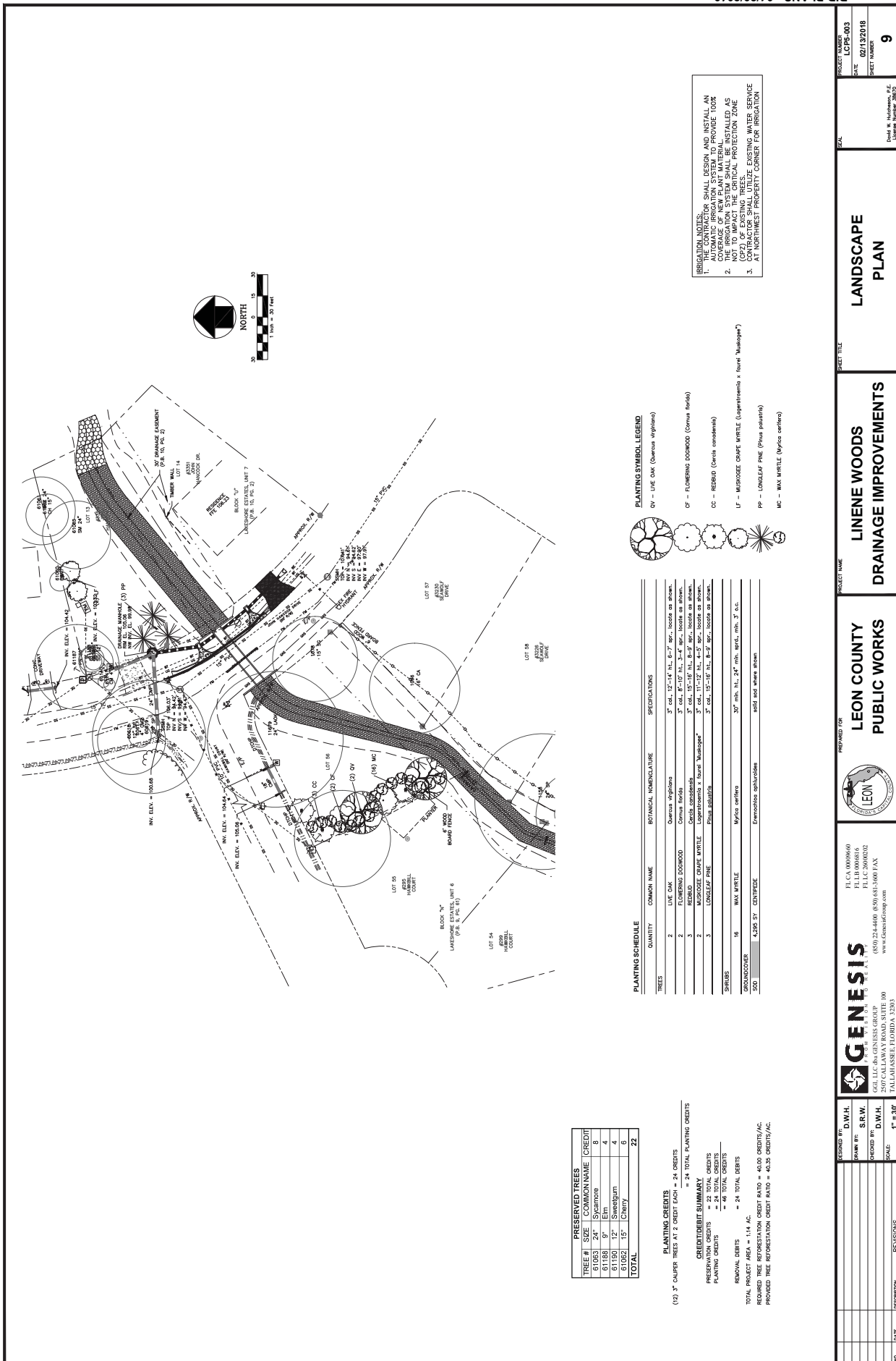
LEON COUNTY
 PUBLIC WORKS

LEON COUNTY
 PUBLIC WORKS

LEON COUNTY
 PUBLIC WORKS

LEON COUNTY
 PUBLIC WORKS





TREE #	SIZE	COMMON NAME	CREDIT
61003	24"	Sycamore	8
61004	12"	Cherry	4
61005	12"	Shardblum	4
61006	15"	Cherry	6
TOTAL			22

(12) 3" OUPPER NEED AT 2 CREDIT EACH = 24 CREDITS
 = 24 TOTAL PLANTING CREDITS

CREDIT/DEBIT SUMMARY
 PRESERVED CREDITS = 24 TOTAL CREDITS
 PLANTING CREDITS = 24 TOTAL CREDITS
 = 48 TOTAL CREDITS

REMOVAL DEBITS = 24 TOTAL DEBITS

TOTAL PROJECT AREA = 114 AC.
 REQUIRED TREE REFORESTATION CREDIT RATIO = 40.00 CREDITS/AC.
 PROVIDED TREE REFORESTATION CREDIT RATIO = 40.35 CREDITS/AC.

PLANTING SYMBOL LEGEND

OV - LIVE OAK (Quercus virginiana)

FD - FLOWERING DOGWOOD (Cornus florida)

CC - REDBUD (Cercis canadensis)

LF - MUSKOGEE GRAPE MYRTLE (Loganiaceae = forest Nalaeogon)

PP - LONGLEAF PINE (Pinus palustris)

MC - WAX MYRTLE (Myrica cerifera)

PLANTING SCHEDULE

QUANTITY	COMMON NAME	BOTANICAL NOMENCLATURE	SPECIFICATIONS
2	LIVE OAK	Quercus virginiana	3" cal., 12'-14" ht., 6"-7" dbh., locate as shown.
2	FLOWERING DOGWOOD	Cornus florida	3" cal., 8'-10" ht., 3'-4" dbh., locate as shown.
3	REDBUD	Cercis canadensis	3" cal., 10'-12" ht., 8"-9" dbh., locate as shown.
2	MUSKOGEE GRAPE MYRTLE	Loganiaceae = forest Nalaeogon	3" cal., 11'-12" ht., 6"-8" dbh., locate as shown.
3	LONGLEAF PINE	Pinus palustris	3" cal., 12'-12" ht., 2"-3" dbh., locate as shown.
16	WAX MYRTLE	Myrica cerifera	30" ht., ht., 24" dbh., 24" dbh., 3" cal., locate as shown.
200	4255 SY - CENTIPED	Eranthis spathuloides	SPREAD 100' where shown.

REMOVAL NOTES:

- THE CONTRACTOR SHALL DESIGN AND INSTALL AN AUTOMATIC IRRIGATION SYSTEM TO PROVIDE 100% TREE SURVIVAL.
- THE IRRIGATION SYSTEM SHALL BE INSTALLED AS NOT TO IMPACT THE CRITICAL PROTECTION ZONE.
- CONTRACTOR SHALL UTILIZE EXISTING WATER SERVICE AT NORTHWEST PROPERTY CORNER FOR IRRIGATION.

PROJECT NUMBER LCS-093	DATE 02/19/2018	SHEET NUMBER 9
LANDSCAPE PLAN		
LINEAR WOODS DRAINAGE IMPROVEMENTS		
LEON COUNTY PUBLIC WORKS		
FL. C.A. 0900540 FL. LR 000816 FL. LC 200202 (850) 224-4400 (850) 681-5000 FAX www.leoncountypubworks.com		
DESIGNED BY: D.W.H.	DRAWN BY: S.R.W.	CHECKED BY: D.M.H.
SCALE: 1" = 30'		
NO.	DATE	REVISIONS

