

Like

Tweet

in



Kristin Dozier

Leon County Commissioner
District 5

Dear Friends,

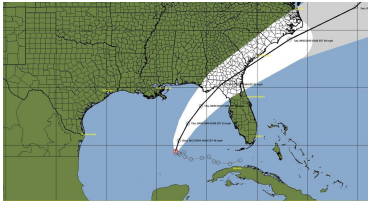
I wanted to pass along the most up-to-date information we have received about Tropical Storm Hermine. The forecast from the National Weather Service anticipates 7-9 inches of rain in our area beginning Thursday afternoon with the heaviest rains occurring tomorrow night and Friday morning. Tropical storm force winds could accompany the storm.



If there is ever anything I can help you with, please feel free to call me (850) 606-5375 or just email me at dozierk@leoncountyfl.gov. You can also find me on [LinkedIn](#), [Facebook](#) and [Twitter](#).

P.S. You're receiving this newsletter because you inquired about government services in the past. If you do not want to receive future newsletters, please click the "unsubscribe" button at the bottom of this email.

Kristin Dozier



Tropical Storm Hermine Update

The following information is the latest update on coordination efforts in our area in anticipation of the storm:

Leon County has activated the [Emergency Information Portal \(EIP\)](#). This portal will include updates on changing conditions such as road closures, sandbag locations, weather advisories, and more. Click [here](#) to view portal.

All Leon County public schools will be closed Thursday and Friday. No decisions yet have been made regarding closures at FSU, FAMU or TCC.

Leon County and City of Tallahassee are working with the [Red Cross](#) to open emergency shelters. Final determinations will be made later today on timing and locations.

Sand bag locations have been opened in coordination with the City of Tallahassee:

- * J. Lee Vause Park, 6024 Old Bainbridge Rd.
- * Rancho Rd., the intersection of Rancho Rd. and Oak Ridge Rd.
- * Tekesta Park, at Tekesta Dr. and Deer Lake Rd. in Killlearn Lakes
- * Apalachee Regional Park (Landfill), 7550 Apalachee Parkway
- * James Messer Park South, 2830 Jackson Bluff Rd.
- * Winthrop Park, 1601 Mitchell Ave. (near the tennis courts)
- * Lawrence-Gregory Community Center, 1115 Dade St.

Citizens who require more information should call Leon County Emergency Management at (850) 606-3700. Also, to receive for timely emergency alerts, sign up [here](#).

To report an outage with Talquin Electric via phone, call 866-899-4832. You can also report an outage online by [clicking here](#).

To report an outage with City of Tallahassee Utilities via phone, call 850-891-4968. You can also report an outage online by [clicking here](#).

After the storm passes, please remember to drain any sources of standing water. Doing this will reduce mosquito breeding areas around your home.

Upcoming Commission Meetings & Workshops

September 13, 2016

3:00pm: County Commission Meeting (view the Commission agenda [here](#))

The Leon County Commission generally meets every other Tuesday at 3pm on the 5th Floor of the County Courthouse. (Commission schedules and agendas are listed [here](#).) Residents can view live coverage of Commission meetings on Comcast channel 16 or stream it live through the [County's website](#). All meetings are open to the public.

Helpful Links and District 5 Amenities

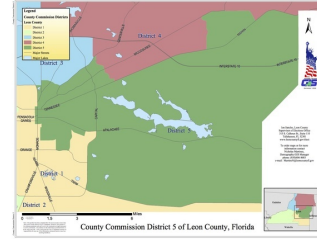
[Online Services](#)

[Report a Problem/Request Service](#)

[Leon County Libraries](#)

[Leon County Parks](#)

[Tallahassee/Leon County Nature Trails \(Trailhassee\)](#)



District 5 Map



To read the latest edition of the Leon County Newsletter, click [here](#).



©2017 Leon County Commission, District 5 | 301 South Monroe Street, Tallahassee, Florida 32301

[Web Version](#)

[Forward](#)

[Unsubscribe](#)

Powered by [Mad Mimi®](#)
A GoDaddy® company