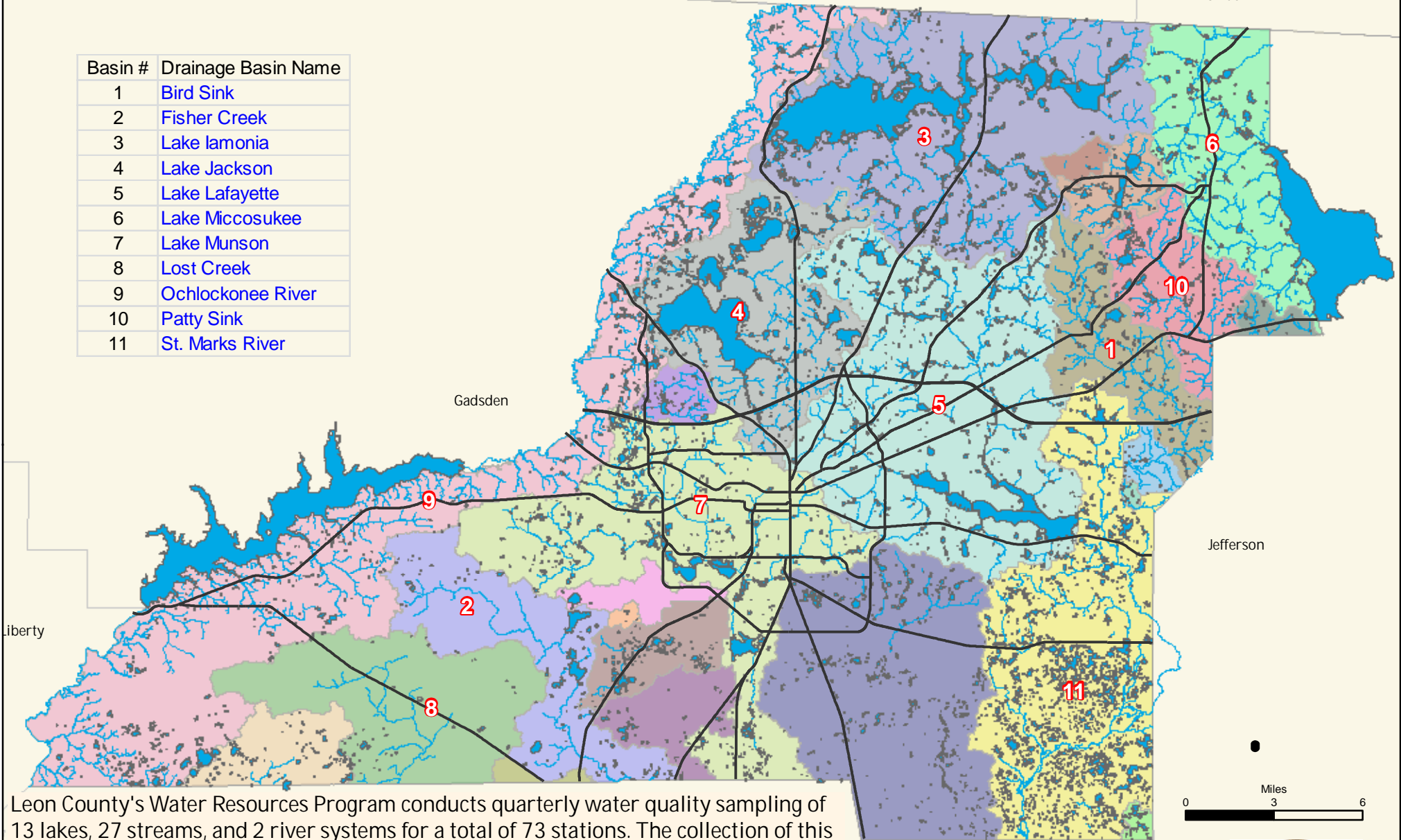


# Leon County Water Quality Data

Basin #	Drainage Basin Name
1	Bird Sink
2	Fisher Creek
3	Lake Iamonia
4	Lake Jackson
5	Lake Lafayette
6	Lake Miccosukee
7	Lake Munson
8	Lost Creek
9	Ochlockonee River
10	Patty Sink
11	St. Marks River



Leon County's Water Resources Program conducts quarterly water quality sampling of 13 lakes, 27 streams, and 2 river systems for a total of 73 stations. The collection of this data provides staff with vital information regarding the health of our local waterbodies. The sampling stations are distributed in 11 drainage basins within Leon County. This map is meant to encourage Leon County citizens to learn more about their local water resources. By clicking on the basins above, you can find detailed water quality information for the sampled waterbodies. For more information on Leon County's water resources, please visit [www.LeonCountyFl.gov/WaterResources](http://www.LeonCountyFl.gov/WaterResources) or call 606-1500.

