

**Mountain Biking & Hiking Trails**

- ACCESS FROM EXISTING INTERNAL VEHICULAR CIRCULATION, CONNECTIVITY WITH PROPOSED ADJACENT TRAIL SYSTEMS NETWORK, PEDESTRIAN WAYFINDING AND TRAILHEAD SIGNAGE ENHANCEMENTS

**Open Meadow / Event Parking / Warm-Up Area**

- MAINTAIN EXISTING AREA TO SERVE AS EVENT DAY OVERFLOW PARKING WITH CAPACITY FOR APPROX (4,000) PARKING SPACES

**Existing Cross Country Course**

- MAINTAIN EXISTING COURSE CONFIGURATION, CONNECTIVITY TO ADJACENT WARM-UP LOOP TRAIL, AND SPECTATOR VIEWING AREAS

**Proposed Cross Country Facilities**

- MAINTAIN EXISTING ACCESS FOR SPECIAL CROSS COUNTRY EVENTS AND ENHANCE WITH PROPOSED EVENT DAY PARTICIPANT DROP OFF AREA
- PROPOSED SUPPORT AMENITIES AND FACILITIES INCLUDE:
  - COMBINED RESTROOM AND CONCESSIONS BUILDING
  - EVENT OPERATIONS / STAFF BUILDING
  - AWARDS / EVENT STAGE
  - EQUIPMENT STORAGE BUILDING
  - COVERED PAVILION
  - ELEVATED COACHES / VIEWING PLATFORM
  - EVENT DAY VENDOR STAGING AREAS, NATURAL LAWN AMPHITHEATER, NATURE BASED PLAYGROUND WITH MISTING STATIONS, COMPREHENSIVE SITE FURNISHINGS, AND PROPOSED VEHICULAR / WAYFINDING SIGNAGE

**Future Active Recreation Facilities**

- PROPOSED FUTURE RELOCATION OF EXISTING RURAL WASTE SERVICES TO AREA (J) AND HOUSEHOLD HAZARDOUS WASTE SERVICES TO AN OFF-SITE LOCATION

**Conservation / Passive Use**

- WILDFLOWER COVERAGE FOR AESTHETIC ENHANCEMENT

**Enhanced Vehicular Circulation**

- PROPOSED EAST - WEST CONNECTION NORTH OF RECREATION FACILITIES AREA TO PROVIDE VEHICULAR CONNECTION FROM EVENT DAY ACCESS TO FUTURE ACTIVE RECREATION AND PROPOSED VISITOR PARKING AREAS

**Proposed Dog Park**

- APPROX 2.5 - 3 ACRE ENCLOSED DOG PARK AREA (3) ENCLOSURES TOTAL WITH FENCING, SHADE STRUCTURES, WAYFINDING SIGNAGE, AND CONNECTION OPPORTUNITIES TO VISITOR PARKING, ENHANCED RECREATION FACILITIES, AND ADJACENT PARK CONSERVATION AREA

**Existing Recreation Facilities**

- (4) LIGHTED MULTI-PURPOSE FIELDS AND RESTROOM / CONCESSION BUILDING

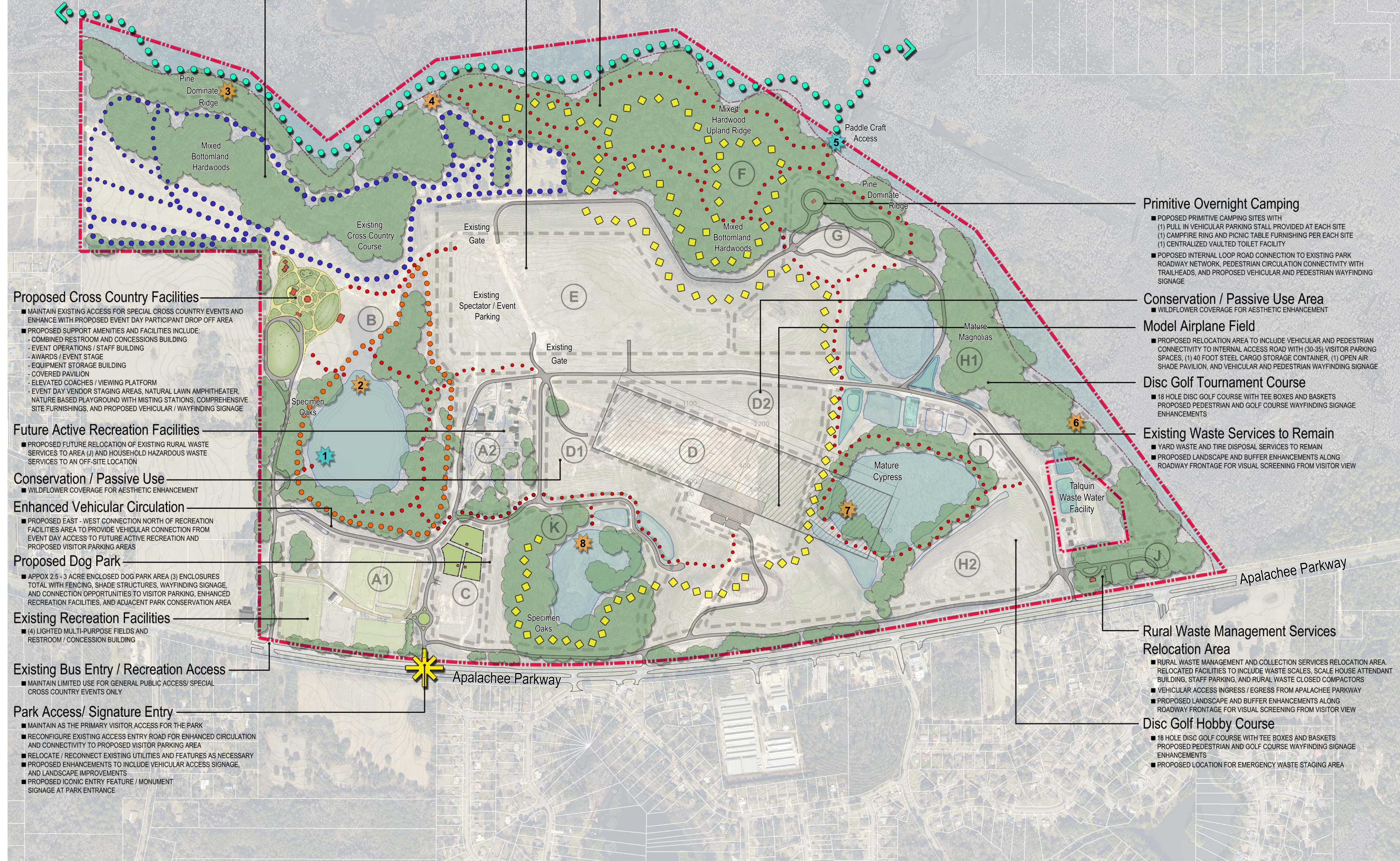
**Existing Bus Entry / Recreation Access**

- MAINTAIN LIMITED USE FOR GENERAL PUBLIC ACCESS / SPECIAL CROSS COUNTRY EVENTS ONLY

**Park Access / Signature Entry**

- MAINTAIN AS THE PRIMARY VISITOR ACCESS FOR THE PARK
- RECONFIGURE EXISTING ACCESS ENTRY ROAD FOR ENHANCED CIRCULATION AND CONNECTIVITY TO PROPOSED VISITOR PARKING AREA
- RELOCATE / RECONNECT EXISTING UTILITIES AND FEATURES AS NECESSARY
- PROPOSED ENHANCEMENTS TO INCLUDE VEHICULAR ACCESS SIGNAGE, AND LANDSCAPE IMPROVEMENTS
- PROPOSED ICONIC ENTRY FEATURE / MONUMENT SIGNAGE AT PARK ENTRANCE

# LOWER LAKE LAFAYETTE



**Primitive Overnight Camping**

- PROPOSED PRIMITIVE CAMPING SITES WITH
  - (1) PULL IN VEHICULAR PARKING STALL PROVIDED AT EACH SITE
  - (1) CAMPFIRE RING AND PICNIC TABLE PROVIDED PER EACH SITE
  - (1) CENTRALIZED VAULTED TOILET FACILITY
- PROPOSED INTERNAL LOOP ROAD CONNECTION TO EXISTING PARK ROADWAY NETWORK, PEDESTRIAN CIRCULATION CONNECTIVITY WITH TRAILHEADS, AND PROPOSED VEHICULAR AND PEDESTRIAN WAYFINDING SIGNAGE

**Conservation / Passive Use Area**

- WILDFLOWER COVERAGE FOR AESTHETIC ENHANCEMENT

**Model Airplane Field**

- PROPOSED RELOCATION AREA TO INCLUDE VEHICULAR AND PEDESTRIAN CONNECTIVITY TO INTERNAL ACCESS ROAD WITH (30-35) VISITOR PARKING SPACES, (1) 40 FOOT STEEL CARGO STORAGE CONTAINER, (1) OPEN AIR SHADE PAVILION, AND VEHICULAR AND PEDESTRIAN WAYFINDING SIGNAGE

**Disc Golf Tournament Course**

- 18 HOLE DISC GOLF COURSE WITH TEE BOXES AND BASKETS
- PROPOSED PEDESTRIAN AND GOLF COURSE WAYFINDING SIGNAGE ENHANCEMENTS

**Existing Waste Services to Remain**

- YARD WASTE AND TIRE DISPOSAL SERVICES TO REMAIN
- PROPOSED LANDSCAPE AND BUFFER ENHANCEMENTS ALONG ROADWAY FRONTAGE FOR VISUAL SCREENING FROM VISITOR VIEW

**Rural Waste Management Services Relocation Area**

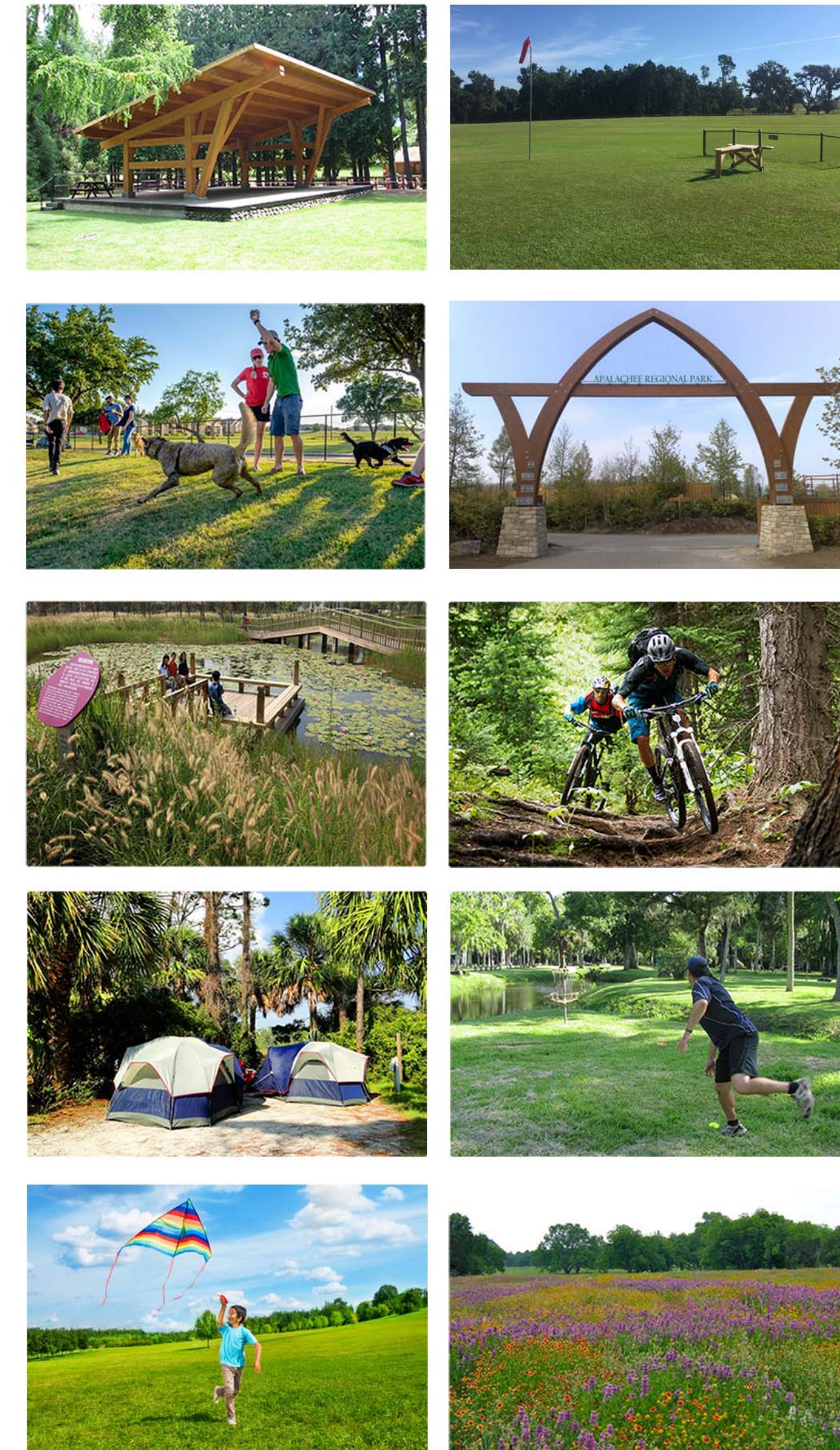
- RURAL WASTE MANAGEMENT AND COLLECTION SERVICES RELOCATION AREA. RELOCATED FACILITIES TO INCLUDE WASTE SCALES, SCALE HOUSE ATTENDANT BUILDING, STAFF PARKING, AND RURAL WASTE CLOSED COMPACTORS
- VEHICULAR ACCESS INGRESS / EGRESS FROM APALACHEE PARKWAY
- PROPOSED LANDSCAPE AND BUFFER ENHANCEMENTS ALONG ROADWAY FRONTAGE FOR VISUAL SCREENING FROM VISITOR VIEW

**Disc Golf Hobby Course**

- 18 HOLE DISC GOLF COURSE WITH TEE BOXES AND BASKETS
- PROPOSED PEDESTRIAN AND GOLF COURSE WAYFINDING SIGNAGE ENHANCEMENTS
- PROPOSED LOCATION FOR EMERGENCY WASTE STAGING AREA

## USE AREA SUMMARIES

A-1	Existing Recreation Facilities	(+/- 22.5 AC)
A-2	Future Active Recreation Facilities	(+/- 12.0 AC)
B	Cross Country Course Facilities	(+/- 130.0 AC)
C	Dog Park Recreation	(+/- 3.0 AC)
D	Model Airplane Field	(+/- 21.0 AC)
D-1 / D-2	Conservation / Passive Use	(+/- 31.0 AC)
E	Open Meadow / Event Parking / Warm-up Space	(+/- 34.5 AC)
F	Mountain Biking / Hiking Trail(s)	
G	Primitive Overnight Camping	(+/- 9.5 AC)
H-1 / H-2	Disc Golf Course(s) / Emergency Waste Staging Area	(+/- 112.5 AC)
I	Existing Grinding Operation(s) to Remain	(+/- 4.0 AC)
J	Rural Waste Management Services - Relocation Area	(+/- 4.5 AC)
K	Conservation Area - Mountain Biking Trail Opportunity	



# Apalachee Regional Park Master Plan

January 2018

### LEGEND

- ◆◆◆ Lafayette Passage Paddle Trail
- Existing Cross Country Course
- Existing Cross Country Warm-Up Loop / Nature Trail Opportunity
- ★ Park Access / Signature Entry
- ◆◆◆ Mountain Biking Trails / Agility Course (+/- 5.90 MILES)
- Hiking / Nature Trails (+/- 6.70 MILES)
- Program Use / Amenity Areas (See Summary)
- ★ Proposed Wildlife / Nature Viewing Opportunity
- ★ Proposed Water Access Opportunity

