

[Like](#)[Tweet](#)[in](#)

Kristin Dozier

Leon County Commissioner District 5

Dear Friends:

Now that Hurricane Irma has passed and recovery efforts are underway, Leon County and our partners are making progress in returning our community back to normal. There is still work to be done and we are committed to ensuring a quick and complete recovery.

Below are some important updates that I wanted to pass along. If there is ever anything I can help you with, please feel free to call me (850) 606-5375 or just email me at dozierk@leoncountyfl.gov. You can also find me on [LinkedIn](#), [Facebook](#) and [Twitter](#).

P.S. You're receiving this newsletter because you inquired about government services in the past. If you do not want to receive future newsletters, please click the "unsubscribe" button at the bottom of this email.



*Photo Credit: Bob Howard from 2017
Word of South Festival*

A handwritten signature in blue ink that reads 'Kristin Dozier'.

Shelter Information

Leon County is still operating one shelter for those in need at **Northwoods Baptist Church, 3762 Capital Circle NW.**

Power Outages

City of Tallahassee Utilities reported over 95% of utility customers now have power. To report an

outage, click [here](#) or call 850-891-4968. To view the COT outage map, visit this [page](#).

To report an outage with Talquin Electric, click [here](#) or call 1-888-802-1832. To view the Talquin Electric outage map, visit this [page](#).

To report an outage with Duke Energy, visit this [page](#) or call 1-800-228-8485. To view the Duke Energy outage map, visit this [page](#).

Damage Assessments

Leon County staff and volunteers have begun conducting preliminary damage assessments. To report damage to your house from Hurricane Irma, visit the [Damage Assessment](#) page on the [Leon County Emergency Information Portal](#).

Solid Waste Services

Regular trash and recycling pickup resumed today for those whose trash pickup date was Monday, September 11. Yard debris will not be picked up by WastePro. Yard debris will be picked up by a debris removal contractor and it may not be the same day as regular pickup.

Storm-related debris collection will begin the week of Monday, September 18 and will continue until all storm-related debris is picked up. As you begin their cleanup, please remember the following tips:

- All debris should be placed curbside between the sidewalk or property line and the curb
- Debris should be separated at the curb from vegetative, construction and demolition, appliances and white goods, electronics,

and
household
hazardous
waste

- Debris
removal
trucks
will
not
pick
up
household
garbage;
Waste
Pro
will
continue
to
collect
trash
and
recycling
as
usual

- Do
not
stack
or
lean
debris
against
sprinkler
heads,
meters,
poles,
trees,
backflows,
and
other
structures

The Leon County Rural Waste Service Centers and the Solid Waste Management Waste Facility will be open **free of charge** for all Leon County citizens as they continue to remove debris. The centers and the Solid Waste Management Facility will be open during their normal hours of operation: the centers will be open Friday, Saturday, and Sunday, and the Solid Waste Management Facility will be open Monday through Saturday.

Current Closures

- All
Leon
County
K-
12
students
will
return

to
classes
on
Thursday,
September
14,
2017

- FSU,
FAMU
and
TCC
will
be
closed
through
Friday,
September
15.

- All
Leon
County
offices,
parks,
and
branch
libraries
reopened
today.

- All
State
of
Florida
offices
reopened
today.

Staying Informed

Download the Leon County Citizens Connect mobile application - Be the first to know about shelter locations, road closures and service changes by downloading the application on the Apple and Google Play stores.

Visit the Leon County Emergency Information Portal - Hosting the same information as the Citizens Connect app, the [Emergency Information Portal](#) can be accessed on a desktop or a mobile browser.

Listen to 88.9 WFSU-FM - Citizens can tune in to 88.9 FM for the most up-to-date information from local public safety officials. Featuring to-the-minute reporting, WFSU, Leon County and the City of Tallahassee remain committed to getting information out on the radio as soon as possible.

Call Big Bend 2-1-1 - If you need community information, services and support any day of the year, Big Bend 2-1-1 is reachable by dialing either 2-1-1 or (850) 617-6333.

Call (850) 606-3700 with questions - Leon County Emergency Management staff is available to answer questions from what you should prepare, act and recover.

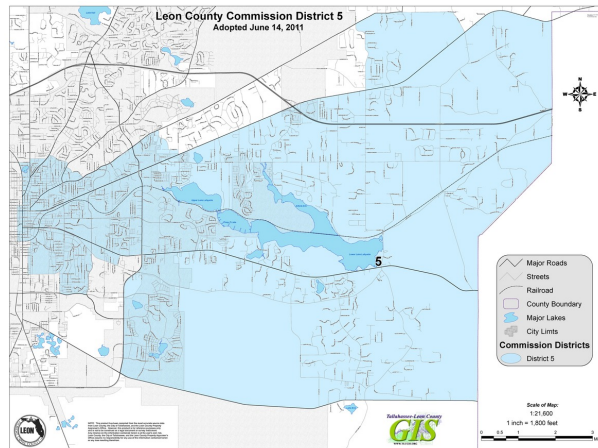
For updates on City of Tallahassee Utilities and other City services, visit Talgov.com.

Insurance Helpline - The Florida Department of Financial Services offers a toll-free Insurance Consumer Helpline to assist Florida's insurance consumers. Insurance Specialists are available to answer questions or concerns regarding insurance coverage and advocate on a consumer's behalf to resolve a dispute with an insurance company. To receive assistance, call 1-877-MY-FL-CFO (693-5236) toll-free, Monday through Friday from 8 a.m. to 5 p.m.

Price Gouging - During a state of emergency, it is unlawful to sell or lease certain commodities for an amount that grossly exceeds the average price. To report price gouging, call 1-866-966-7226.

Helpful Links and District 5 Amenities

- [Leon County Emergency Information Portal](#)
- [Leon County Online Services](#)
- [Report a Problem/Request Service](#)
- [Leon County Libraries](#)
- [Leon County Parks](#)
- [Tallahassee/Leon County Nature Trails \(Trailhassee\)](#)



District 5 Map



©2018 Leon County Commission, District 5 | 301 South Monroe Street, Tallahassee, Florida 32301

[Web Version](#)

[Forward](#)

[Unsubscribe](#)

Powered by [Mad Mimi®](#)

A GoDaddy® company