

LEON COUNTY WASTE DISPOSAL GUIDE



Garbage • Recycling • Yard Debris • Bulk Collections • Hazardous Waste



Leon County Solid Waste Management

A NATIONALLY RECOGNIZED PROGRAM

(850) 606-1800

UPDATED
November 1, 2023

Leon County Waste Disposal Services

This guide is for unincorporated Leon County residents who reside outside Tallahassee City Limits.

If you are a customer of City of Tallahassee Utilities, please contact the City of Tallahassee for information regarding their solid waste services.

Contacts

Leon County Solid Waste Management Facility

7550 Apalachee Parkway
(850) 606-1800

Hours: Mon-Sat, 8 a.m. - 5 p.m.

LeonCountyFL.gov/SolidWaste

Waste Pro USA - Leon County Solid Waste Collection Provider

1975 Commonwealth Lane
Midway, FL

(850) 606-1899

www.wasteprousa.com/leon-county

Leon County Recycling and Sustainability

1907 S. Monroe Street
(850) 606-5000

Hours: Mon-Fri, 8 a.m. - 5 p.m.

LeonCountyFL.gov/GrowingGreen

City of Tallahassee Solid Waste

435 N. Macomb Street
(850) 891-4968

Hours: Mon - Fri 8 a.m. - 5:30 p.m.

talgov.com/you/you-solidwaste

Leon County Hazardous Waste Center

7550 Apalachee Parkway
(850) 606-1803

Hours: Mon-Sat, 8 a.m. - 5 p.m.

LeonCountyFL.gov/HHW

Marpan Recycling

6020 Woodville Highway
(850) 216-1006

Marpan.com



Curbside Collection Service

Leon County residents who reside outside Tallahassee City Limits may sign up for curbside garbage and recycling service via Waste Pro, the County's Solid Waste collection contractor.

On Your Collection Day

Place garbage and recycling carts, yard debris, and bulk items at the curb no later than 6 a.m. on your collection day.

Your collection day is based on your location within the County. Please contact Waste Pro (850) 606-1899 or go to LeonCountyFL.gov/SolidWaste to determine your pick-up schedule.

How Often is Pick-Up?

Garbage, recycling, and yard debris will be picked up weekly on your collection day. Bulk items will be picked up weekly within two business days.

Proper Placement

Garbage and recycling carts should be placed at least three feet apart, away from objects such as mailboxes, light posts, and overhead items such as low limbs or wires.

For Service Issues

First, reach Waste Pro at (850) 606-1899 or WasteProUSA.com/Leon-County. If the problem persists, the County has dedicated staff available at (850) 606-1800 to ensure adherence to waste contract standards.



Recycling

Curbside Recycling

Curbside Recycling

Leon County has single-stream recycling, which means all recyclable items can go into the same cart with no need to sort. Please place all recyclable plastic, paper, cardboard, glass and metal in the same cart and keep all items loose — do not bag recyclables.

Get Another Cart

If you routinely run out of space in your recycling cart, consider flattening boxes. A second recycling cart can be provided for a one-time fee of \$50, and a delivery fee of \$15. Or you can pick it up to avoid the deliver fee. Contact Waste Pro at (850)606-1899 to place your request.

Plastic Bags and Styrofoam

Do not bag recyclables, as this is problematic for sorting staff and equipment. Plastic bags and Styrofoam are not recyclable in Leon County bins. However, most large grocery stores will accept these items for recycling.

What Can I Recycle?
No need to separate your items, they can all go into the same container!

Yes please!

- Aluminum & Steel Cans
- Newspapers & Magazines
- Office Paper
- Glass Bottles & Jars
- Plastic Bottles, Cups & Jugs
- Envelopes & Junk Mail
*including the ones with clear windows!
- Cardboard

No thanks!

- Styrofoam
- Plastic Bags
- Chip Bags
- Medical Sharps
- Juice & Milk Cartons
- Paper Towels & Napkins
- Lightbulbs & Electronics
*note: recycle at Leon County Household Hazardous Waste!

Leon County Office of Resource Stewardship
www.LeonCountyFL.gov/Recycling

Recycling Drop-Off Locations

- Leon County Solid Waste Management Facility (7550 Apalachee Pkwy.)
- Miccosukee Rural Waste Service Center (13051 Miccosukee Rd.)
- Woodville Rural Waste Service Center (549 Henry Jones Rd.)
- Ft. Braden Rural Waste Service Center (2485 E. Joe Thomas Rd.)
- Renaissance Building (435 N. Macomb St.)
- St. John's Episcopal Bookstore (131 N. Calhoun St.)
- South Lake Ella Drive, in main parking lot.
- Hilaman Golf Course (2737 Blair Stone Rd.)
- City of Tallahassee Solid Waste Services Office (2727 Municipal Way)

Yard Debris

Plastic bags are no longer accepted for yard waste. Loose items such as pine needles or leaves can be placed in paper yard bags or reusable containers. Paper bags may be found at grocery, hardware, or retail stores.

Each container, bag, or piece of yard debris must weigh less than 50 pounds.

A maximum of 8 cubic yards will be collected weekly. Debris piles and small debris are interchangeable as long as the total amount remains less than 8 cubic yards.

YARD DEBRIS PARAMETERS

A maximum of 8 cubic yards will be collected weekly.

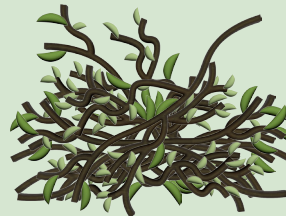
8
CUBIC YARDS
MAXIMUM

50 LB
MAXIMUM

Each container, bag, or piece of yard debris must weigh less than 50 pounds.

1 CUBIC YARD PILE

Approximately equal to the size of a washing machine



There is no required dimension for individual piles.



No individual limb may exceed six inches in diameter.

1 CUBIC YARD CONTAINED

Approximately equal to 6 thirty-gallon paper yard debris bags/reusable containers



Loose items not containerized will not be collected.

Loose items are to be placed in paper yard bags or owner containers.

YARD DEBRIS EXCEEDING PARAMETERS

\$35
PER CUBIC YARD
OF EXCESS
YARD DEBRIS

Waste Pro can remove yard debris that does not meet the parameters for a fee not to exceed \$35 per cubic yard. Contact Waste Pro for a cost estimate.



Yard debris can be dropped off by County residents at no cost at any of the four rural waste locations.

Visit www.LeonCountyFL.gov/RWSC for locations.

Bulk Collection

What Qualifies as a Bulk Item?

Bulk items are white goods such as refrigerators, dishwashers, ranges, or water heaters, as well as furniture, mattresses, pieces of carpet, and other bulky items that cannot go into the waste cart due to size or weight. Bulky material does not include electronics; such items can be disposed of at the Leon County Household Hazardous Waste Center, 7550 Apalachee Parkway.

How Much Bulk Per Week?

A maximum of 2 cubic yards can be placed for pickup each week. This is roughly equal to a washer and dryer.

Bulk Item Pickup

Bulk item pickups no longer need to be scheduled. Simply place bulk items at the curb on your collection day and they will be removed within two business days thereafter.



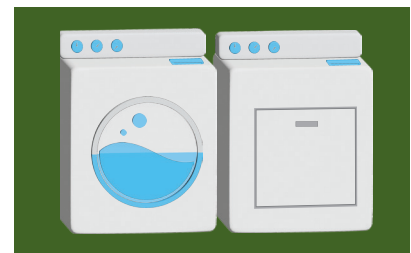
BULK WASTE GUIDELINES

No call-ahead scheduling necessary.

Removal will occur on regular service day or no later than two business days thereafter.

Quantity limited to 2 cubic yards per week. This is roughly equal to a washer and dryer.

2
CUBIC YARDS
MAXIMUM



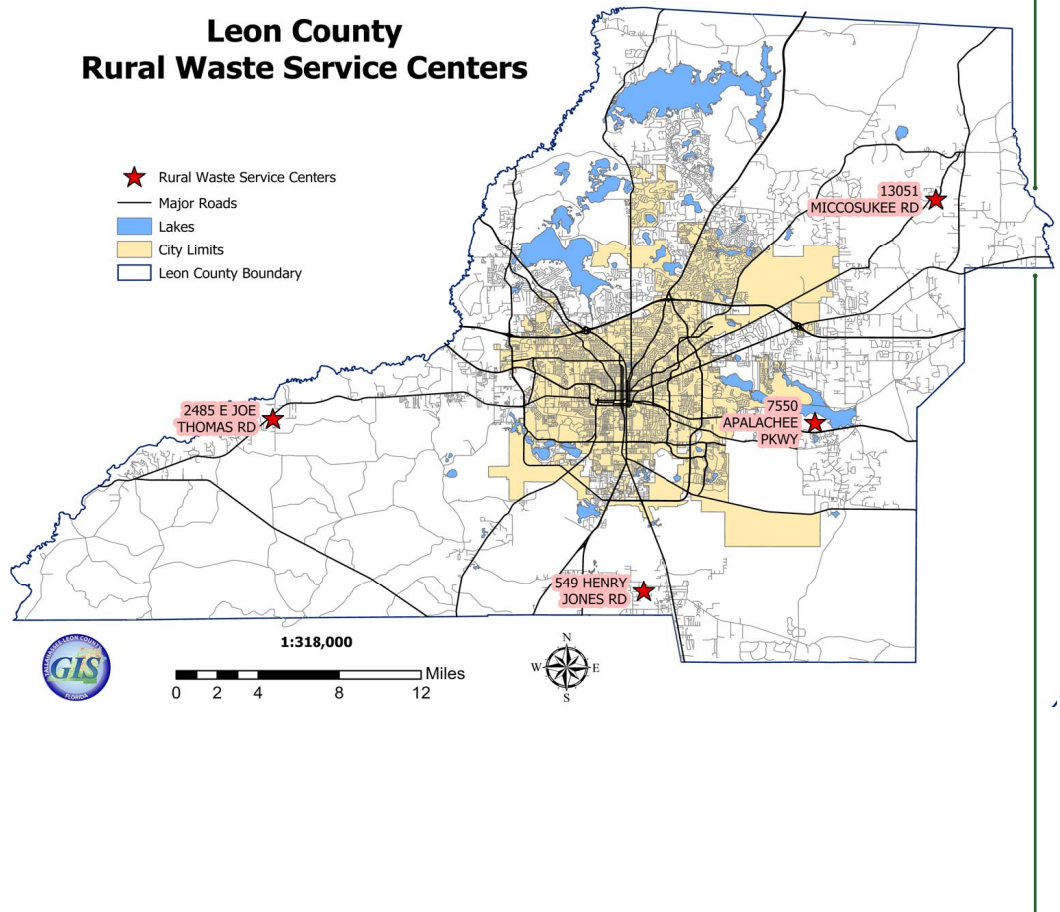
Items not placed on roadside or curb will not be picked up.

Rural Waste Service Centers

There are four Rural Waste Service Center locations available for residents of unincorporated Leon County. Disposal is free.

LOCATIONS

- ★ **Solid Waste Management Facility**
7550 Apalachee Pkwy.
Mon-Sat: 8 a.m. - 5 p.m.
(850) 606-1800
- ★ **Woodville**
549 Henry Jones Rd.
Fri: 9 a.m. - 6 p.m.
Sat & Sun: 9 a.m. - 5 p.m.
(850) 488-9099
- ★ **Fort Braden**
2485 East Joe Thomas Rd.
Fri: 9 a.m. - 6 p.m.
Sat & Sun: 9 a.m. - 5 p.m.
(850) 488-9119
- ★ **Miccosukee**
13051 Miccosukee Rd.
Fri: 9 a.m. - 6 p.m.
Sat & Sun: 9 a.m. - 5 p.m.
(850) 922-0097



What are Rural Waste Centers?

Rural Waste Centers are solid waste sites for residents to bring household waste, recycling, bulk items, yard waste, and limited household hazardous waste. (Waste disposal is limited to one level pickup truck load or equivalent, per customer, per day.)

To learn more call Leon County Solid Waste Management at **(850) 606-1824** or go to LeonCountyFL.gov/RWSC.

Household Hazardous Waste

When thrown away, many household products can pose a health risk and pollute the environment. Both Leon County and City of Tallahassee residents may drop off their household hazardous waste items for free at the Household Hazardous Waste Center at 7550 Apalachee Parkway, the drop-off site at 1800 N. Blairstone Road, or one of the four Rural Waste Service Centers (see page 6 for locations).

Items Accepted

We accept items that are flammable, corrosive, reactive, toxic or contain electronic components. If you're not sure if something is hazardous, we encourage you to bring it anyway. If in doubt, bring it out!

Acceptable items include:

- Electronics (Televisions, Computers, etc.)
- Batteries
- Light Bulbs
- Paint, Oils
- Glue, Solvents
- Cleaner (Aerosols, Mildew Remover, etc.)
- Lawn and Garden Chemicals
- Pool Chemicals
- Motor Oil and Antifreeze
- Gasoline, Kerosene, Diesel Fuel
- Propane Bottles and Tanks (less than 20 lbs.)
- Nail Polish & Remover
- Hair Dyes



Business Hazardous Waste Collection

Leon County Solid Waste Management allows businesses that generate very small quantities of hazardous waste (less than 220 lbs. per month) to dispose of their hazardous waste and electronics at a lower cost than most commercial hazardous waste services. This can save businesses thousands of dollars in fees. Businesses will also receive documentation of proper disposal for their records. Businesses and other agencies are not permitted to use drop off sites but can call and make an appointment to drop off their items with the Hazardous Waste Center (850) 606-1803.

Prescription and Medical Waste

Prescription medicines and medical sharps should not be thrown away as regular trash because they can contaminate the environment, injure citizens and workers, or even end up in the hands of the wrong people.

Properly Dispose of Medical Sharps:

The Florida Department of Health in Leon County provides a medical sharps disposal program. To participate, citizens show proof of Leon County residency to receive a free sharps container. Return the container to the Health Department once full. Pick up a free medical sharps container at the Florida Department of Health in Leon County office (1515 Old Bainbridge Road). **Questions? Please call (850) 404-6400.**

Dispose of Prescriptions:

Properly dispose of medical waste at one of five permanent Drug Enforcement Administration-authorized collection locations:

- **Tallahassee Police Department (234 E. 7th Ave.)**
- **Walgreens (1202 N. Magnolia Dr.)**
- **Walgreens (3531 Thomasville Rd.)**
- **Walgreens (2009 W. Tennessee St.)**
- **CVS (5466 Thomasville Road N.)**

Ask your pharmacist about DisposeRX packets that will properly render unwanted medications unusable, allowing for safe at-home disposal.

Additionally, local organizations host two annual drug take back events each year: Operation Medicine Cabinet in April and National Prescription Drug Take Back Day in October. For more information about these events, go to DEA.org.

If none of these options are open to you, the EPA recommends placing the medication in a sealed container, mixing it with an undesirable substance like coffee grounds or cat litter, and placing the container in the trash.

The Renew Center

Renew Center

Items brought to the Household Hazardous Waste Center that are in good condition are placed in the Leon County's Renew Center and are completely free for County residents (e.g.: household cleaners, wood stain, latex paint, etc.).

Free Event Recycling Bins

If planning an event within Leon County, citizens may borrow our ClearStream recycling containers for free.

Free Mulch

Did you know that we recycle collected yard debris and turn it into mulch? When available, coarse or fine mulch can be picked up by both City and County residents at the Solid Waste Management Facility. Assistance loading your truck or open trailer is available Monday, Wednesday, and Friday.

To check availability, or schedule loading assistance, please call (850) 606-1800.



Leon County Composting

In Leon County, an estimated 30,000 tons of food is sent to the landfill every year, which averages out to 200 pounds of food for every citizen. The good news? Leon County has two composting initiatives to help citizens, businesses, and organizations divert food scraps from the landfill and turn trash into treasure.

Compost Drop-off Site (Located at 7550 Apalachee Pkwy.)

Acceptable food scrap items include:

- Fruit and vegetable scraps
- Expired produce
- Egg shells
- Paper napkins
- Coffee grounds

The compost bins cannot accept:

- Meat or bones
- Dairy
- Food cooked in oil
- Pasta and grains
- Coffee cups
- Bioplastics

Residents can bring food scraps to drop-off into one of the six Earth Machine Compost Bins at the Solid Waste Facility (next to the mulch pick-up area).

Compost Bin Sale

If you are interested in composting at home, you're in luck! Leon County offers a compost bin sale for interested residents, businesses, and organizations. Leon County offers Earth Machine backyard compost bins for the wholesale cost of \$50 and counter-top kitchen compost collection bins for \$20. If you're interested in getting a bin but cost is a barrier, email Sustainability@LeonCountyFL.gov for more information.

If you would like to purchase a bin, please fill out the interest form on LeonCountyFL.gov/Composting.



Tire Disposal

Waste tires are accepted at the Solid Waste Management Facility (7550 Apalachee Pkwy). Residents may dispose of up to four tires for free, and commercial loads are \$160 per ton. Tires without rims are preferred.

Tire Amnesty Days Event

Leon County Government, in partnership with the Florida Department of Environmental Protection, to host the Tire Amnesty Days program, a free tire collection program to reduce mosquito breeding grounds. Call for the latest program status, (850) 606-1800.

Just one tire improperly stored in a backyard can become a breeding ground for thousands of mosquitoes which can carry diseases like Zika, West Nile and Dengue Fever. During Tire Amnesty Days citizens can dispose of old tires for free, helping to keep the community safe and protect our environment. Tires are recycled and repurposed for playgrounds and other facilities. During Amnesty Days residents may dispose of up to 25 passenger car tires free of charge. Commercial loads will not be accepted as part of the program.





Leon County Solid Waste
(850) 606-1800
www.LeonCountyFL.gov/SolidWaste

Effective October 1, 2023